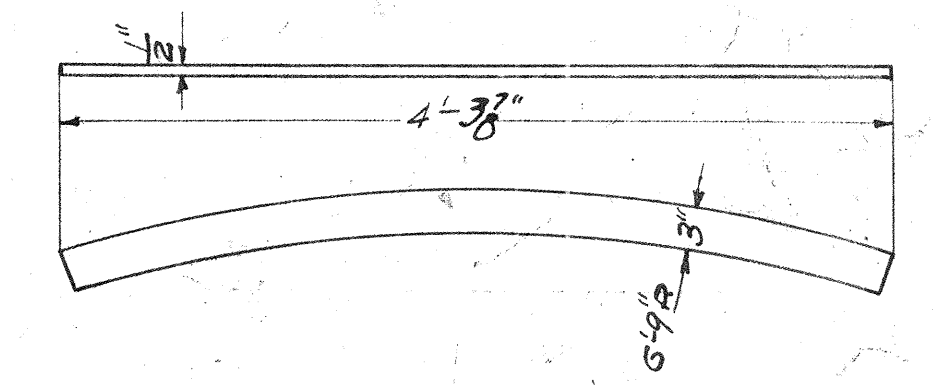
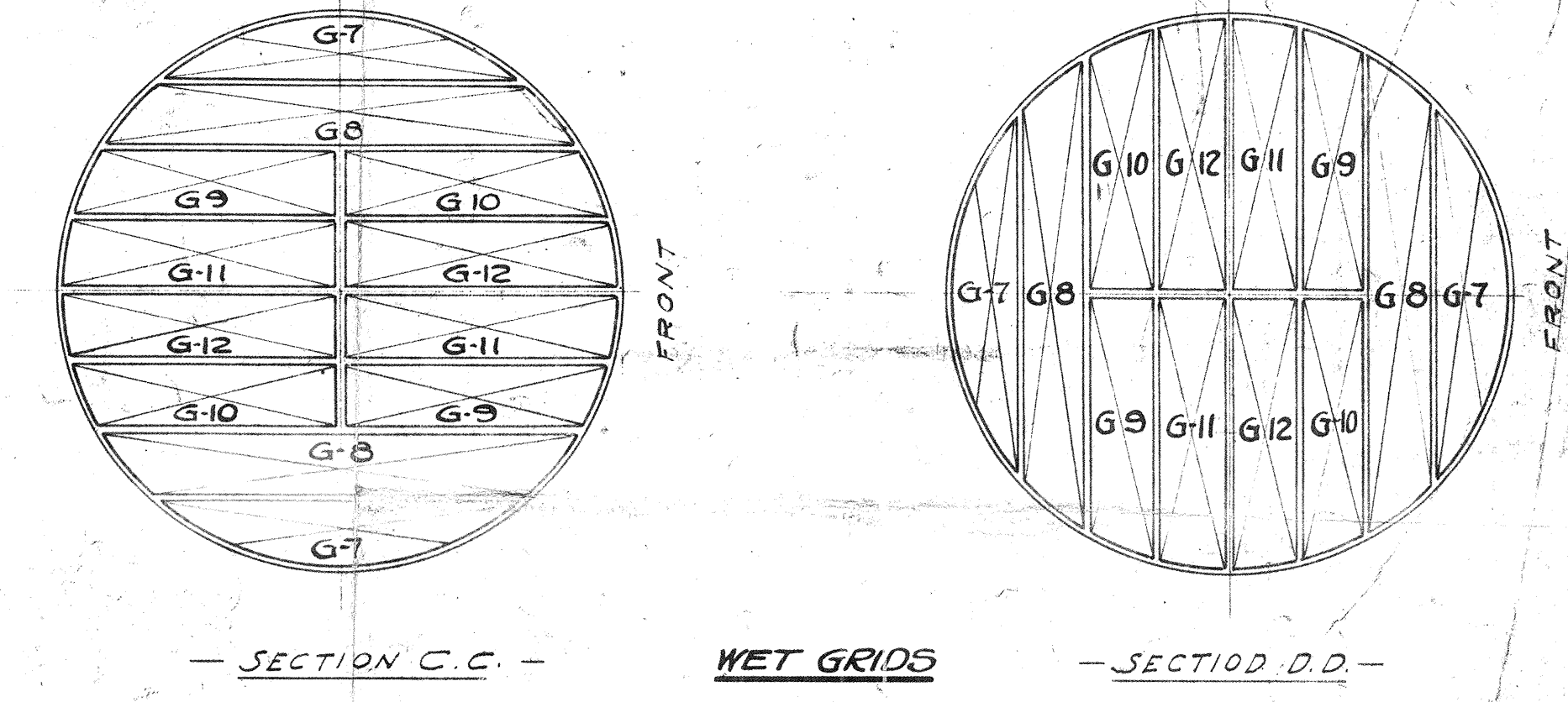
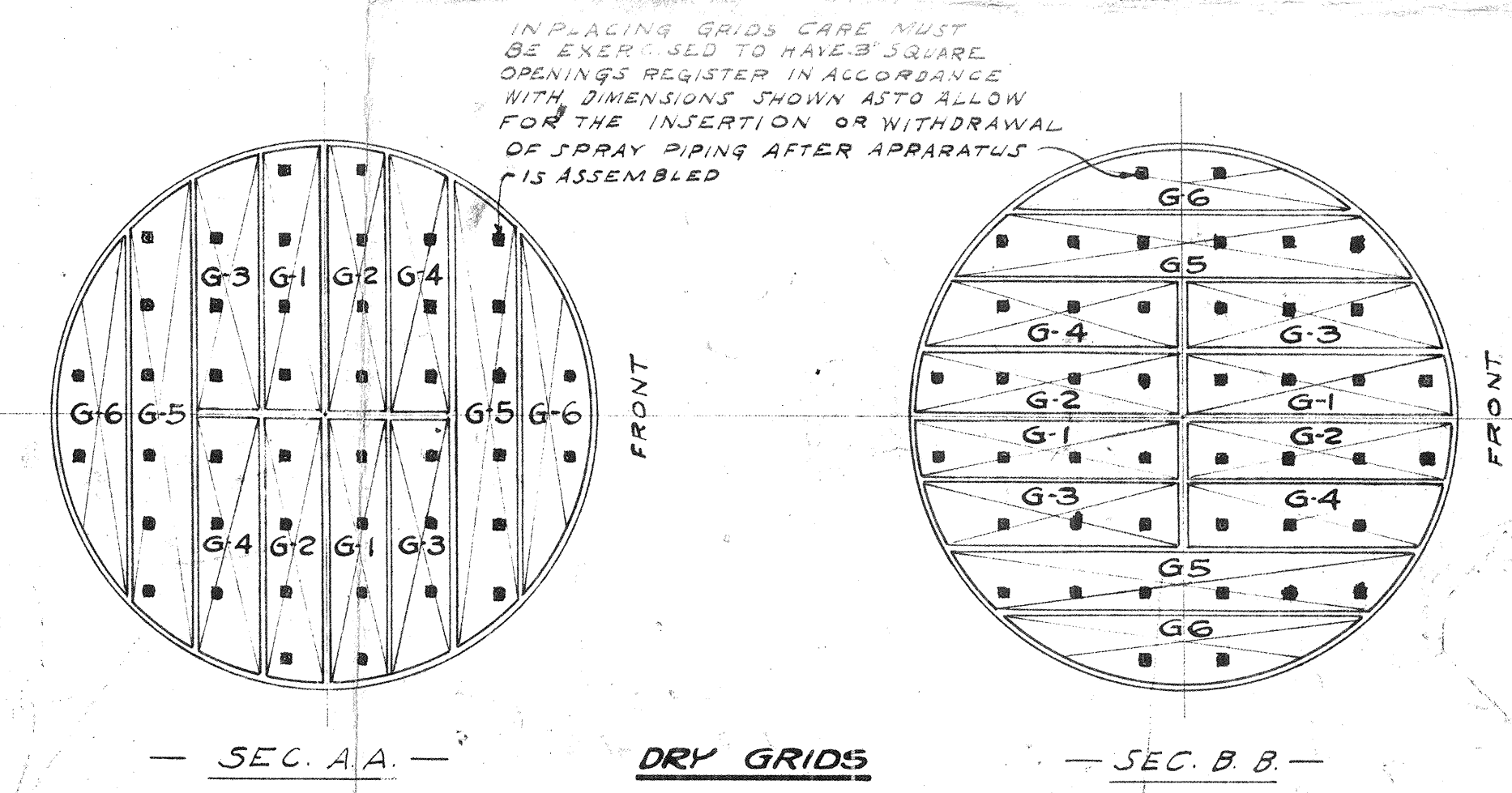
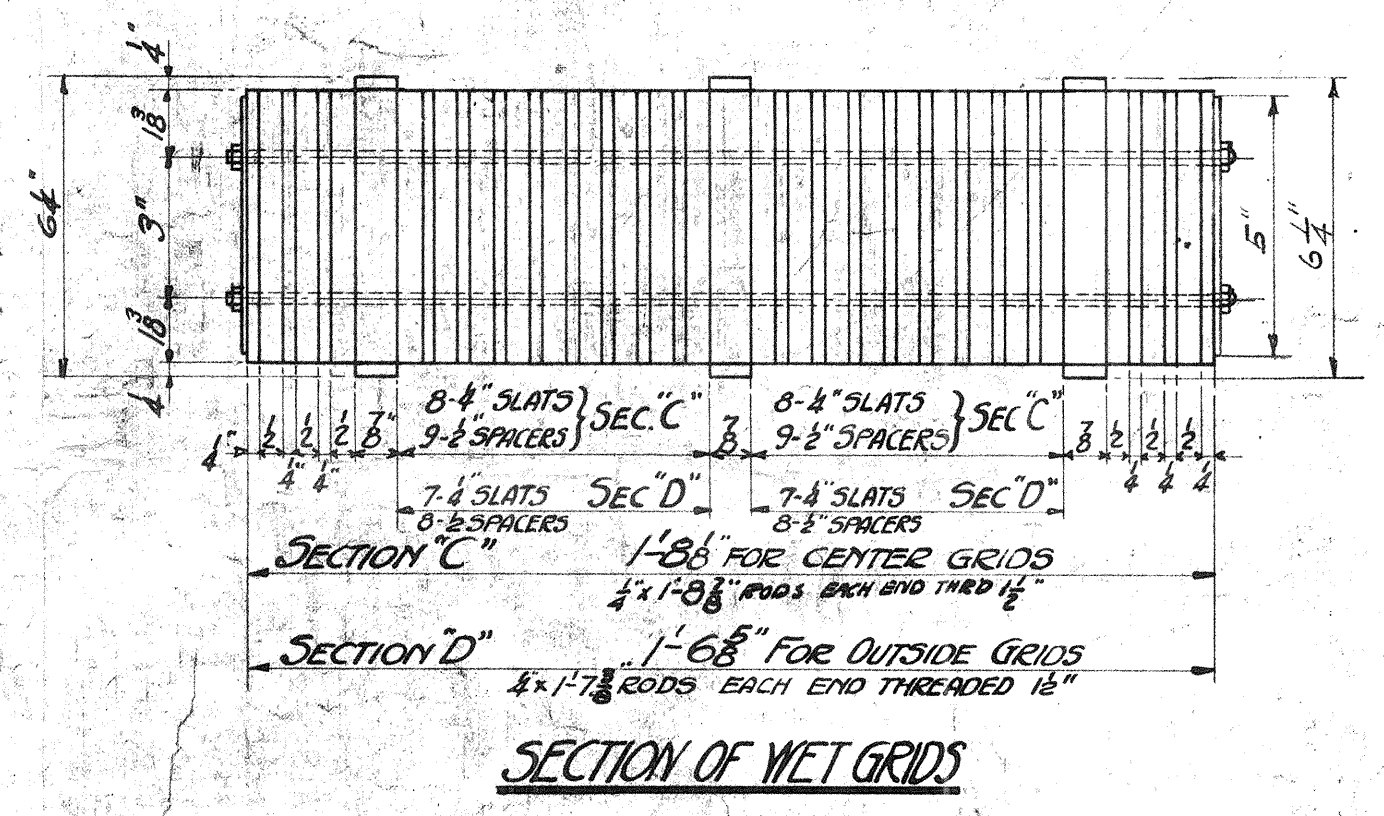
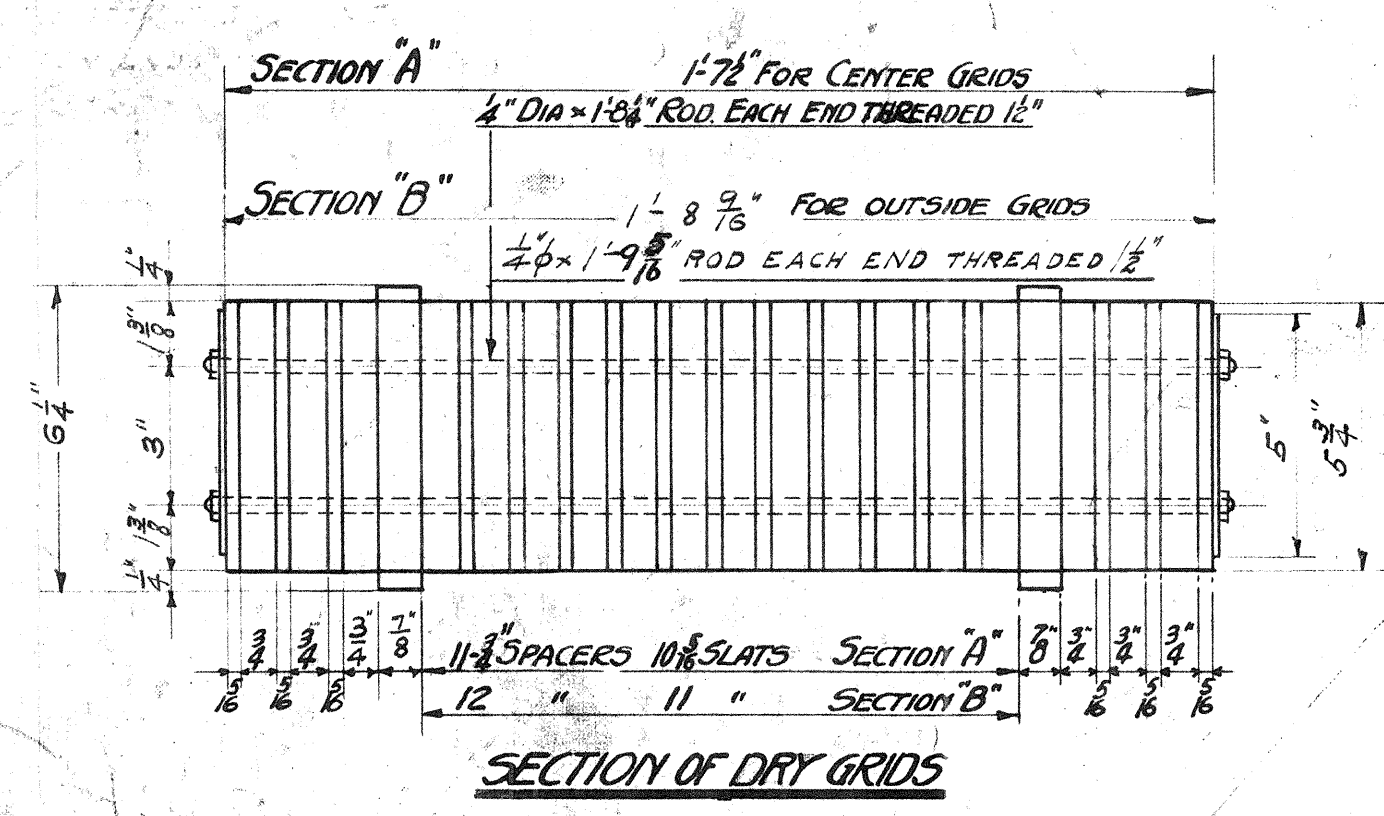
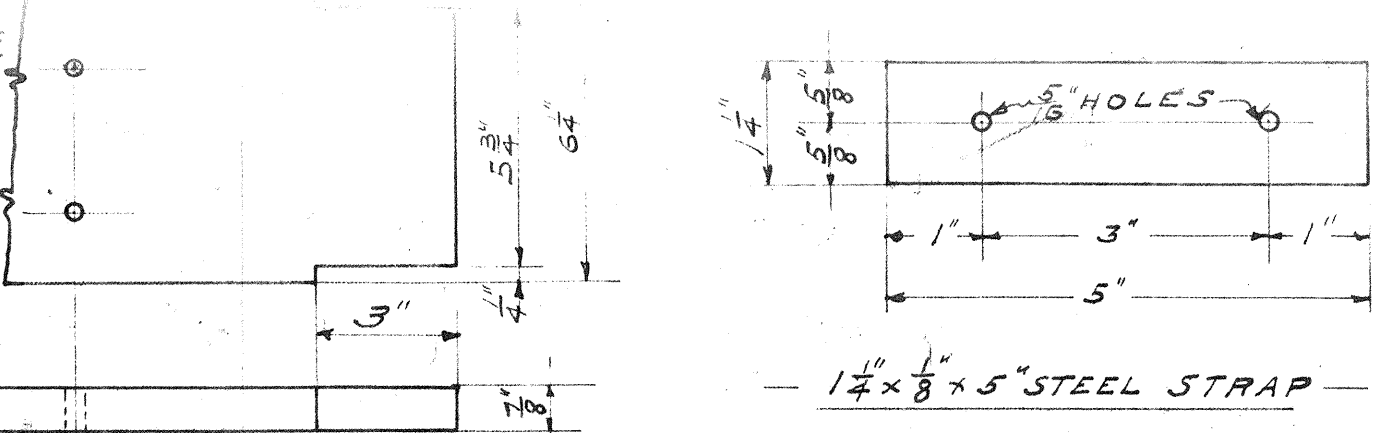
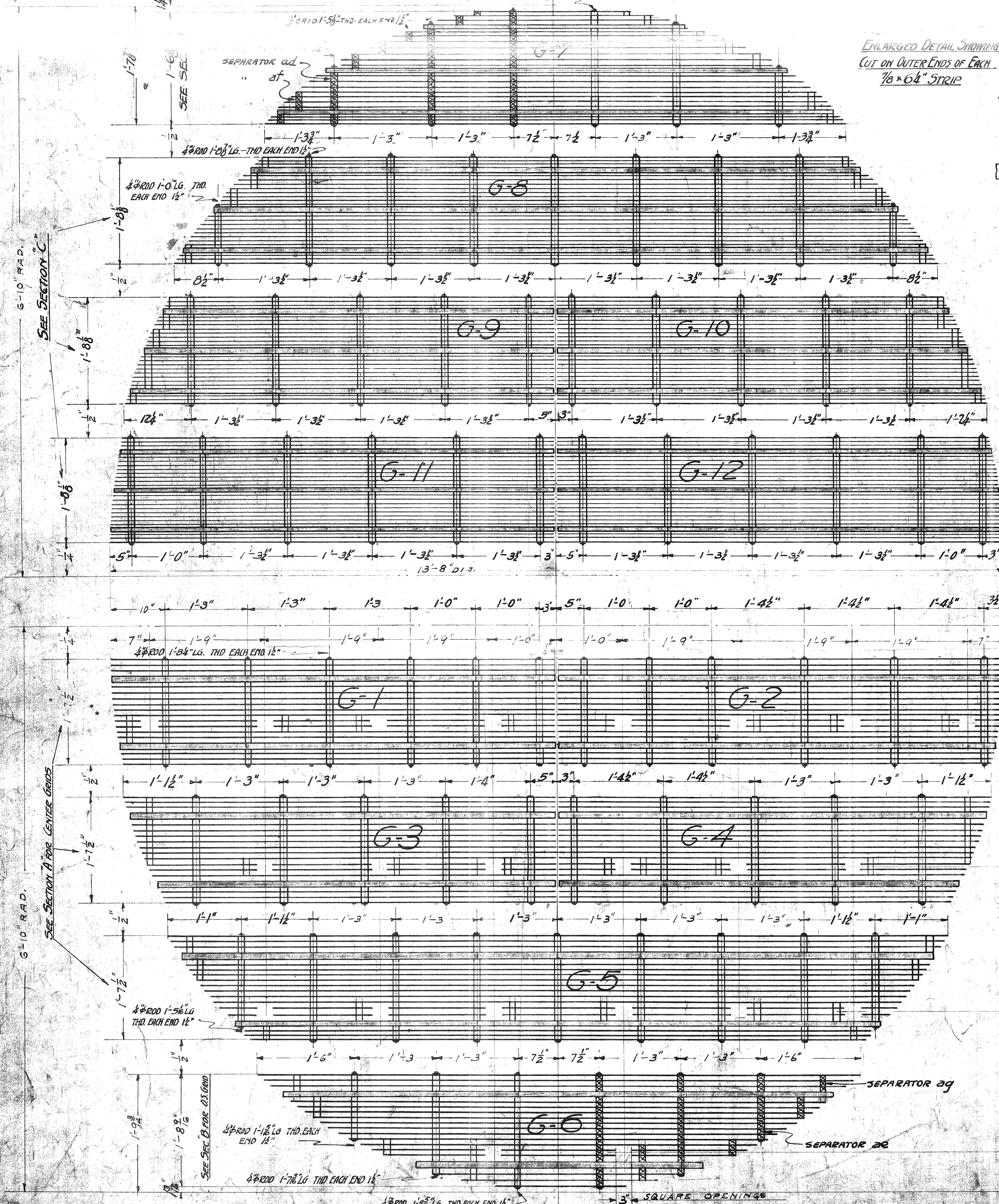
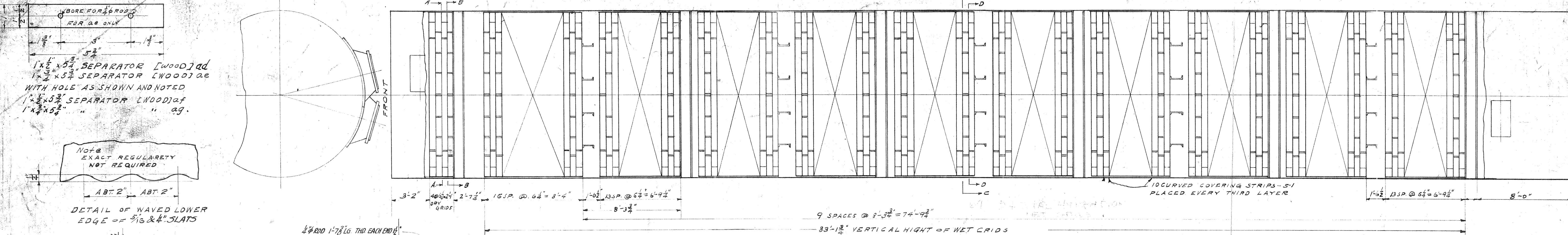


BORER FOR BORE FOR GRIDS ONLY

1x2x5/8" SEPARATOR [WOOD] ad  
 1x2x5/8" SEPARATOR [WOOD] ad  
 WITH HOLE AS SHOWN AND NOTED  
 1x2x5/8" SEPARATOR [WOOD] ad  
 1x2x5/8" " " ag.

NOT BE EXACT REGULARITY NOT REQUIRED

DETAIL OF WAVED LOWER EDGE OF 5/16 & 1/4" SLATS



**BILL OF MATERIAL FOR ONE SCRUBBER**

MARK	QTY REQ'D	DESCRIPTION	MATL	PATT.	REMARKS
1514-G1	8	DRY GRID	4TH HALF SEC.	WOOD	MADE UP COMPLETE AS SHOWN
G2	8	"	"	"	"
G3	8	"	3RD HALF	"	"
G4	8	"	"	"	"
G5	8	"	2ND	"	"
G6	8	"	OUTSIDE	"	"
G7	266	WET GRID	OUTSIDE	"	"
G8	266	"	2ND	"	"
G9	266	"	3RD HALF	"	"
G10	266	"	"	"	"
G11	266	"	4TH	"	"
G12	266	"	"	"	"
S1	320	CURVED COVERING STRIP	"	"	"

REFERENCES:  
 SCRUBBER DETAILS 14'-0" DIA. x 100'-0" HIGH. 1904

LIGHT OIL PLANT SCRUBBERS  
 DETAILS OF GRIDS FOR 14" SCRUBBERS

H. L. MARCH 1926