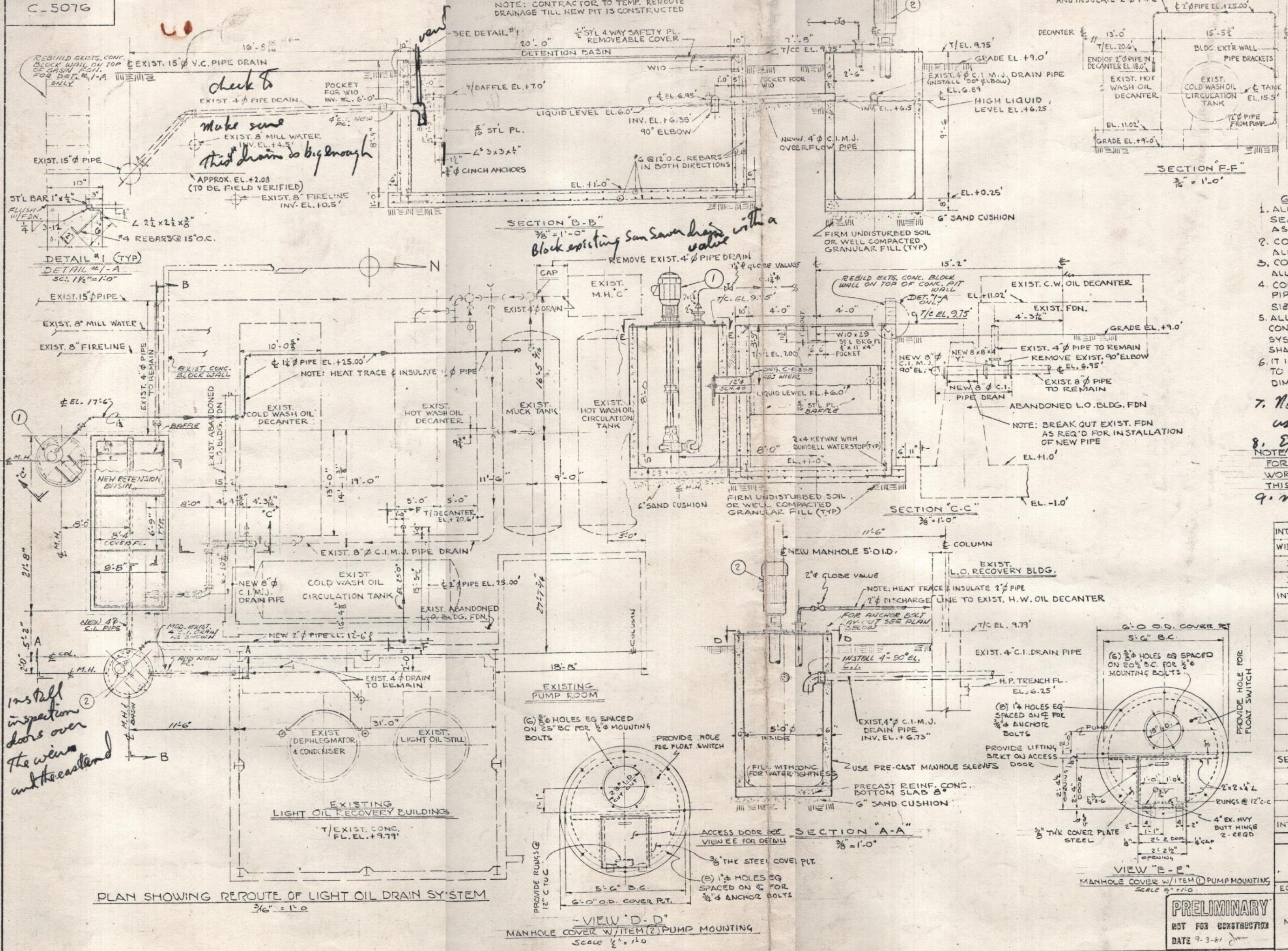


C-5076

NOTE: CONTRACTOR TO TEMP. REROUTE DRAINAGE TILL NEW PIT IS CONSTRUCTED

NOTE: HEAT TRACE AND INSULATE 2" PIPE

BILL OF MATERIAL	
ITEM NO.	DESCRIPTION
1	GOULDS' MODEL N° 3171, SIZE 2 1/2" VERTICAL SUMP & PROCESS PUMP 3" O.L.G. 2" NPT DISCHARGE. 20 GPM @ 60' HEAD, 1/2 HP. 1750 RPM MOTOR 3 PH. 60 Hz. 460 VOLT W/BUILT IN ADJ. LEVEL CONTROL (BALL FLOAT)
2	GOULDS' MODEL N° 3171, SIZE 2 1/2" VERTICAL SUMP & PROCESS PUMP 3" O.L.G. 2" NPT DISCHARGE. 100 GPM @ 75' HEAD, 3/4 HP. 1750 RPM MOTOR 3 PH. 60 Hz. 460 VOLT W/BUILT IN ADJ. LEVEL CONTROL (BALL FLOAT)



- GENERAL NOTES:-**
1. ALL PIPE TO BE SCH 40, BLACK STEEL SEAMLESS, CR. A, ASTM A-120 EXCEPT AS NOTED.
 2. CONTRACTOR TO PROVIDE & INSTALL ALL PIPE, PIPE FITTINGS, & VALVES.
 3. CONTRACTOR TO INSULATE & HEAT TRACE ALL NEW LINES (WEATHER PROTECTED)
 4. CONTRACTOR IS RESPONSIBLE FOR ALL PIPE BRACKETS & SUPPORTS OF ADEQUATE SIZE
 5. ALL LINES SHALL BE INSTALLED W/ VALVE CONNECTIONS FOR COMPLETE DRAINAGE OF THE SYSTEM. SUFFICIENT CLEAN-OUT CONNECTIONS SHALL BE PROVIDED @ ACCESSIBLE LOCATIONS.
 6. IT IS THE RESPONSIBILITY OF THE CONTRACTOR TO VERIFY ALL EQUIPMENT, PIPE RUNS & DIMENSION PRIOR TO DOING JOB.
 7. No copper bearing alloys to be used in pumps, fittings etc
 8. Explosion proof motors & starters
 9. No burning or welding
- FOR GENERAL NOTES CONCERNING CONCRETE WORK & SHOWING MORE DETAIL WORK THIS DRAWING WITH C-6398

INTERLAKE #C-6398 MODIFICATION TO L.O. DRAIN SYS
WILPUTTE #37520 LIGHT OIL UNDERGROUND PIPING
" #40082 " " PLANT ARR'GT
" #40084 " " " " "
INTERLAKE #1434 LIGHT OIL PIPING ASSEMBLY
" #1478 " " PLANT
" #1506 " " DECANTERS
" #1523 " " PIPING ASSEMBLY
" #1527 " " SEWER CONNECTIONS
" #1531 " " PLANT
" #1770 " " UNDERGROUND PIPING
" #2349 " " SANITARY SEWER SYS.
" #CA-3221 " " SEWER MODIFICATION
" #CA-3222 " " PROFILES
SEMET-SOLVAY #34059 LGT OIL PIPING
" " #34060 " " " "
" " #34061 " " " "
" " #34207 " " BLDG. FDN. PLAN
INTERLAKE #1522 " " " " "
REFERENCE DRAWINGS LISTED ABOVE

Interlake Inc.
CHICAGO COKE PLANT

EC-77-2121 3900/10

BENZOL PLANT. LIGHT OIL EQUIPMENT. MODIFICATION TO L.O. DRAIN SYSTEM PLAN, SECTIONS & DETAILS

PRELIMINARY
NOT FOR CONSTRUCTION
DATE 9-3-61

NOTE: This drawing for print is the property of the Interlake, Inc. U.S.A. and shall not be traced, or reproduced in any manner, nor used for any purpose whatsoever except by written permission of Interlake, Inc.

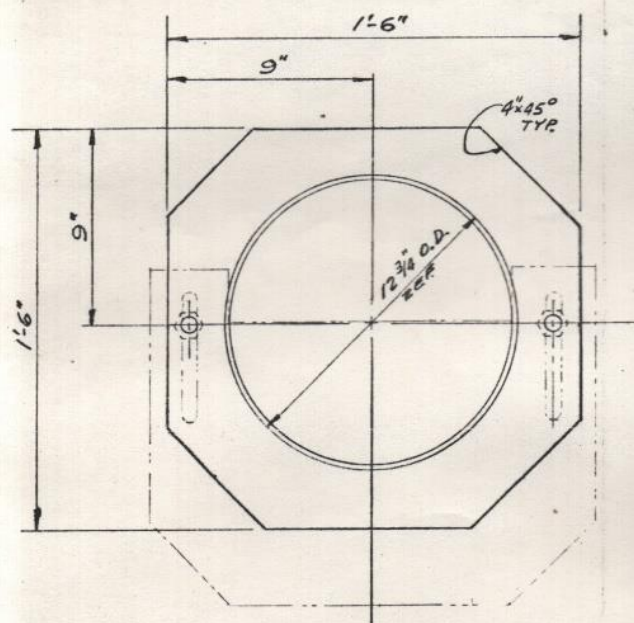
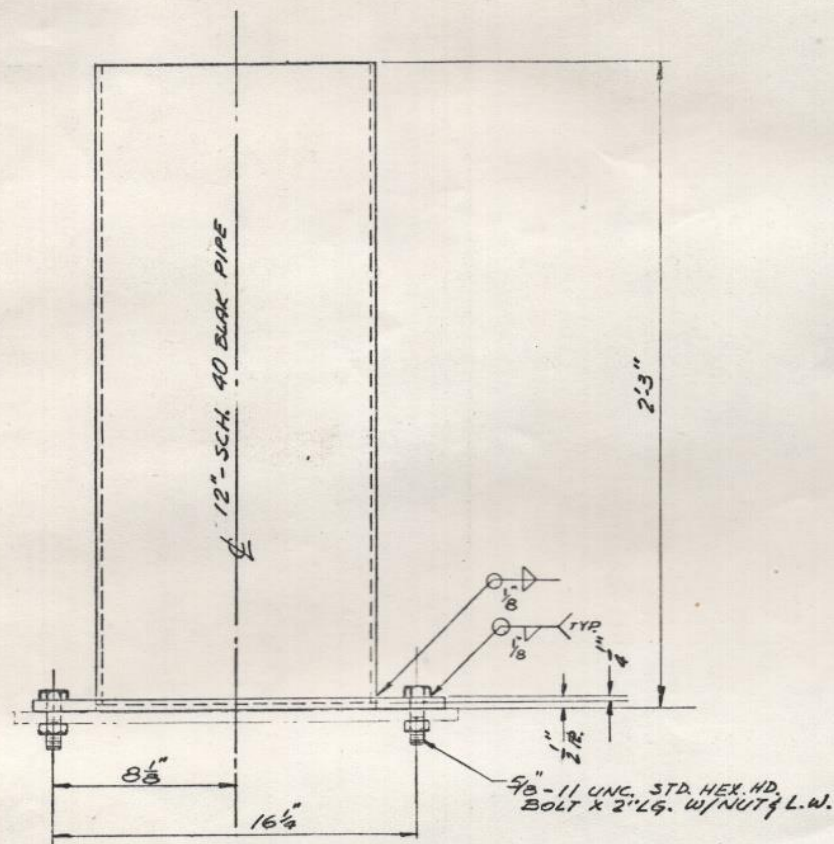
DO NOT SCALE WORK TO DIMENSIONS

DR. PRINCE CH.
CH. APP. C-5076

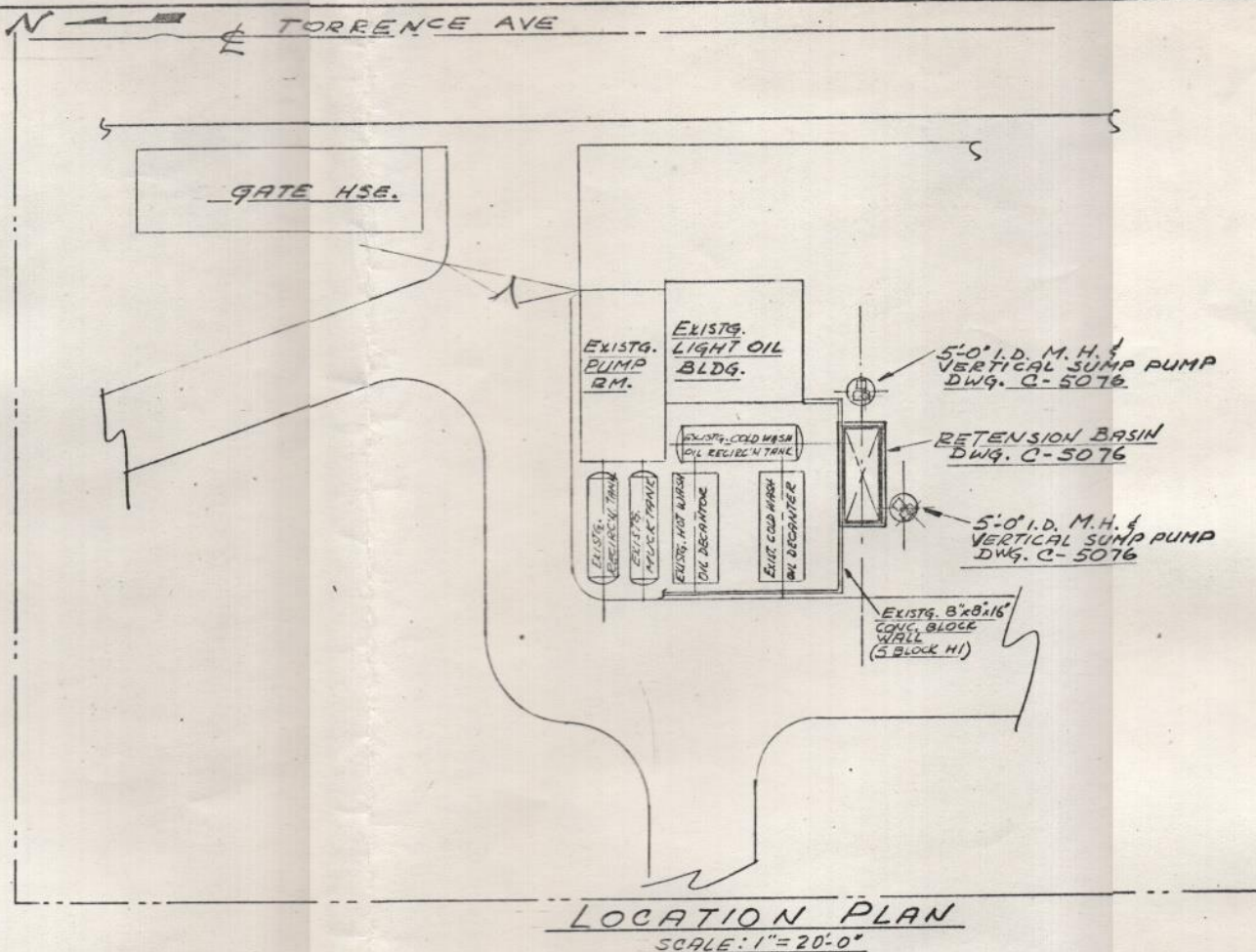
REVISIONS
6-12-61

8669-D

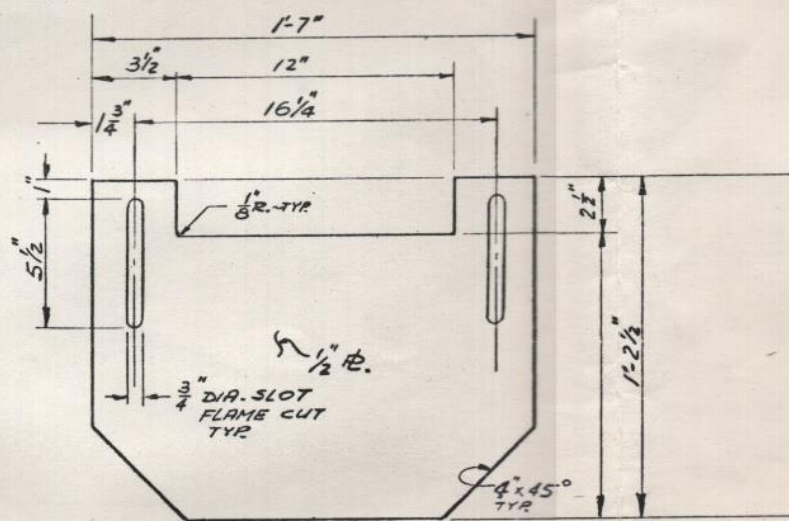
A-A
B-B
C-C
D-D
E-E
F-F
G-G
H-H
J-J
K-K
L-L
M-M



SLEEVE - DET. A
MATERIAL: ASTM-A36



LOCATION PLAN
SCALE: 1" = 20'-0"



WEIR PD. - DET. B
MATERIAL: ASTM-A36

*Stainless Steel
nuts, studs & plate
R Winters to set*

BILL OF MATERIAL	
ITEM NO.	DESCRIPTION

GEN. NOTES:

1. CONCRETE SHALL HAVE MINIMUM 3000 COMPRESSIVE PSI STRENGTH @ 28 DAYS UNLESS NOTED.
2. REBARS SHALL BE DEFORMED GRADE 60 BILLET STEEL BARS, ASTM-A615.
3. REBAR CLEARANCE: (A) 3" FOR CONCRETE AGAINST GROUND, (B) FOR SIDES AND TOP: 1 1/2" FOR #5 AND SMALLER, 2" FOR #6 AND LARGER.
4. REBAR SPLICES SHALL BE AT LEAST 30 BAR DIA. OVERLAP WITH 18" MIN. AND SHALL ALSO BE IN ACCORDANCE WITH THE LATEST A.C.I. SPECS.
5. BEVEL ALL EXPOSED CONCRETE CORNERS 1x45°
6. ALL CONCRETE WORK SHALL CONFORM TO CURRENT A.C.I. STANDARDS WHERE APPLICABLE.
7. THREE COPIES OF ALL SHOP DWGS. SHALL BE SUBMITTED FOR STRUCTURAL ENGINEERING DEPT. APPROVAL. THE APPROVED ORIGINAL TRACING OR MALAR SHALL BE GIVEN TO INTERLAKE, INC. AFTER ERECTION.
8. CONTRACTOR TO VERIFY ALL DIM. IN FIELD AND/OR UNDERGROUND UTILITIES BEFORE STARTING WORK OR FABRICATION.
9. ANY SUBSTITUTION FOR STATED EQUIPMENT SHALL BE SUBMITTED IN WRITING AND APPROVED BY STRUCTURAL ENGINEERING DEPT.

C-5076 - MOD. TO LIGHT OIL DRAIN SYSTEM
REFERENCE DRAWINGS LISTED ABOVE

Interlake, Inc.

3300/10

PRELIMINARY
NOT FOR CONSTRUCTION
DATE 5-12-81 GBB

CHICAGO COKE PLANT
BENZOL PLANT - LIGHT OIL EQUIPMENT
MODIFICATION TO LIGHT OIL DRAIN
SYSTEM PLAN & DET'S.

DR. A.M. 5-21-81
CH APP
C-6398

NOTE: This drawing (or print) is the property of Interlake, Inc. U.S.A. and shall not be traced, or reproduced in any manner, nor used for any purpose whatsoever except by written permission of Interlake, Inc.

DO NOT SCALE WORK TO DIMENSIONS

REVISIONS