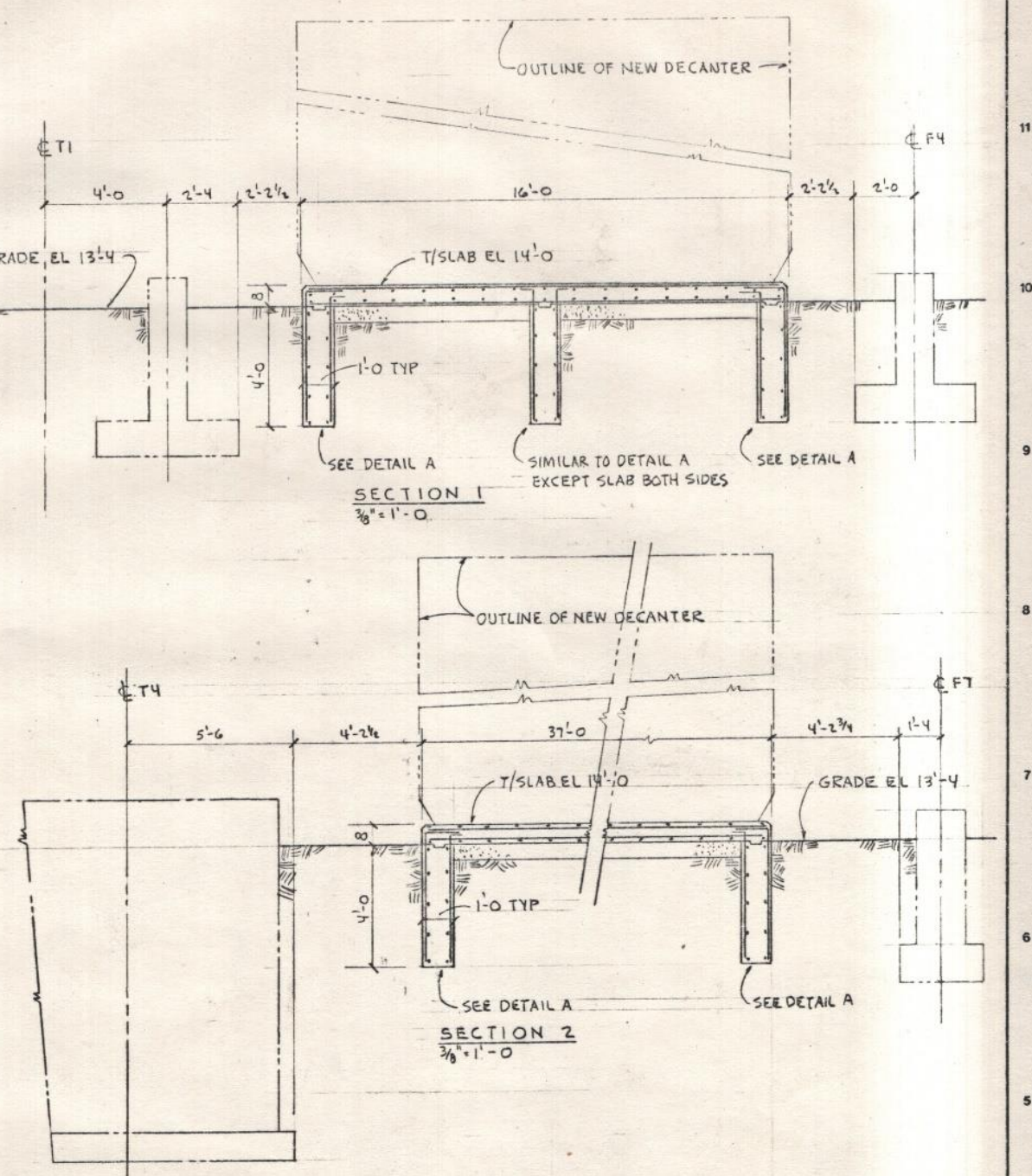
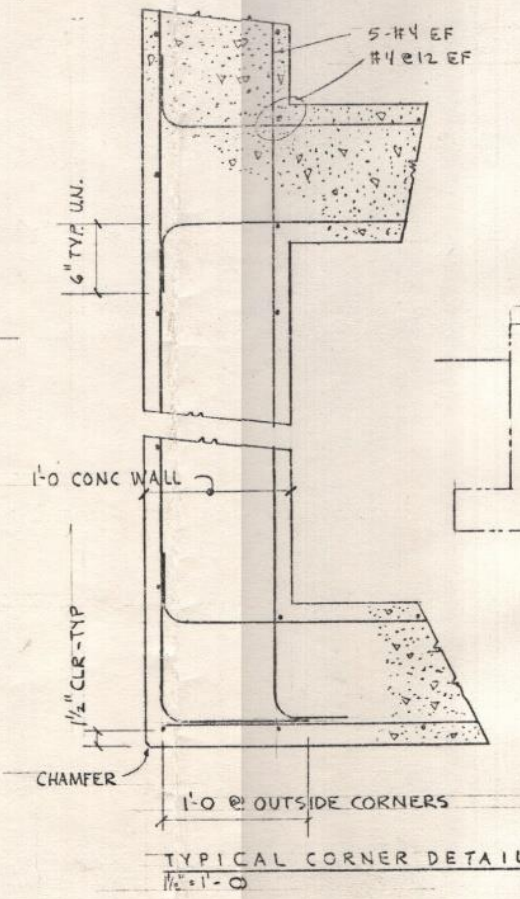
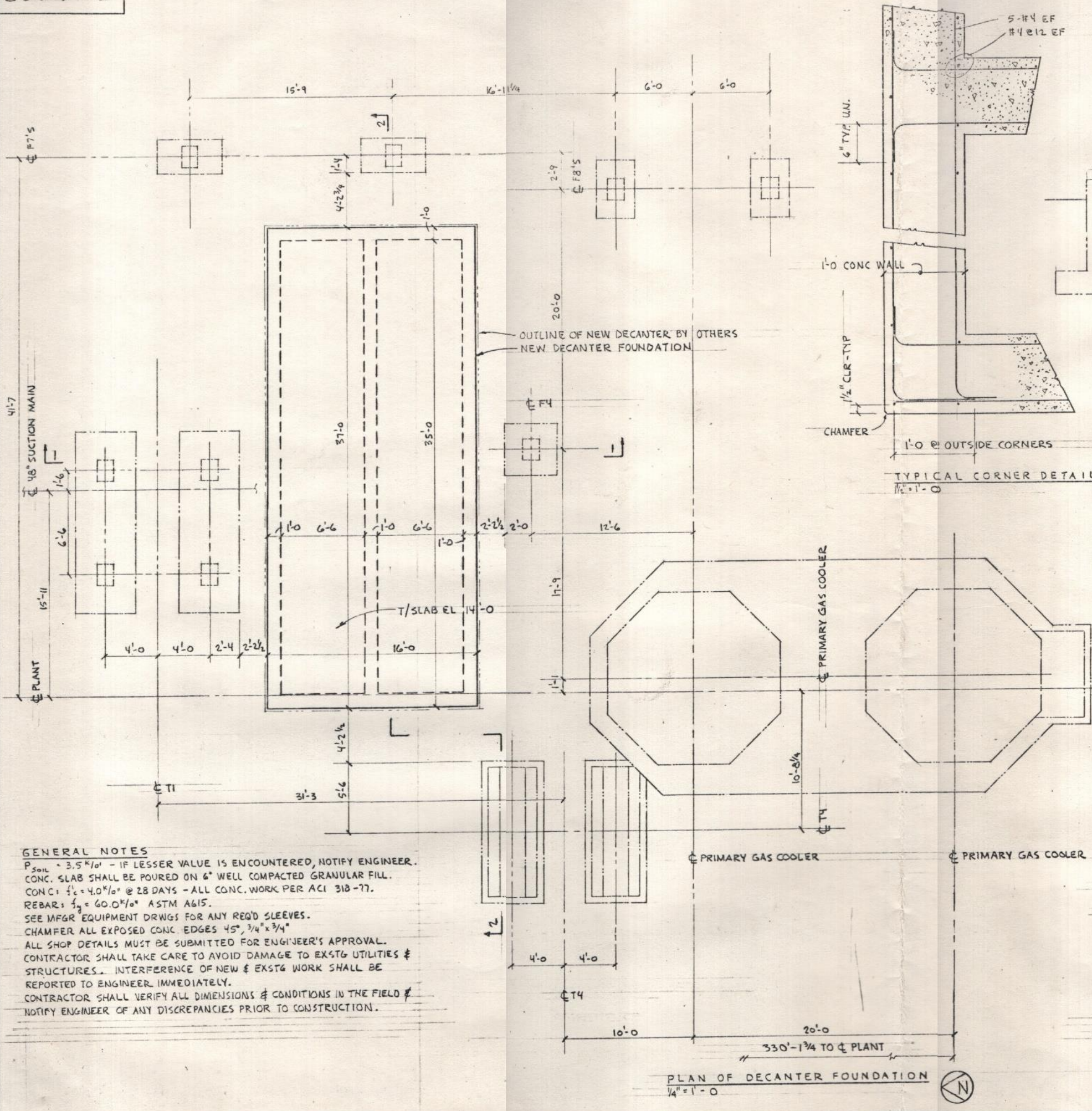


CTS
A-A
B-B
C-C
D-D
E-E
F-F
G-G
H-H
J-J
K-K
L-L
M-M

MKS A-C-D-E-F-G-H-J-K-L-M-N-P-R-S-T-U-W-X-Y-Z

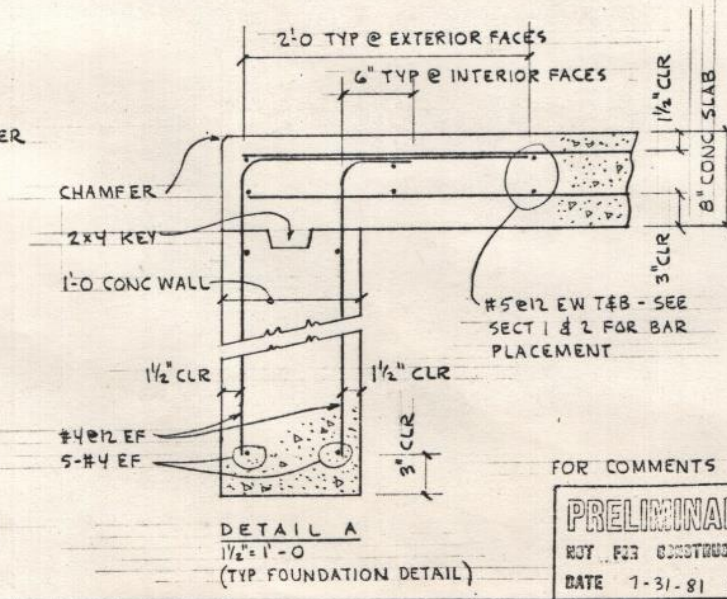
C-6403

BILL OF MATERIAL		
ITEM NO.	NO. REQD.	DESCRIPTION



GENERAL NOTES
 $P_{soil} = 3.5 \text{ K/ft}^2$ - IF LESSER VALUE IS ENCOUNTERED, NOTIFY ENGINEER.
 CONC. SLAB SHALL BE POURED ON 6" WELL COMPACTED GRANULAR FILL.
 CONC: $f'_c = 4.0 \text{ K/ft}^2$ @ 28 DAYS - ALL CONC. WORK PER ACI 318-77.
 REBAR: $f_y = 60.0 \text{ K/ft}^2$ ASTM A615.
 SEE MFGR EQUIPMENT DRWGS FOR ANY REQ'D SLEEVES.
 CHAMFER ALL EXPOSED CONC. EDGES 45°, $\frac{3}{4}" \times \frac{3}{4}"$
 ALL SHOP DETAILS MUST BE SUBMITTED FOR ENGINEER'S APPROVAL.
 CONTRACTOR SHALL TAKE CARE TO AVOID DAMAGE TO EXISTG UTILITIES & STRUCTURES. INTERFERENCE OF NEW & EXSTG WORK SHALL BE REPORTED TO ENGINEER IMMEDIATELY.
 CONTRACTOR SHALL VERIFY ALL DIMENSIONS & CONDITIONS IN THE FIELD & NOTIFY ENGINEER OF ANY DISCREPANCIES PRIOR TO CONSTRUCTION.

PLAN OF DECANTER FOUNDATION
 $\frac{1}{4}" = 1'-0"$



DETAIL A
 $\frac{1}{2}" = 1'-0"$
 (TYP FOUNDATION DETAIL)

FOR COMMENTS
PRELIMINARY
 NOT FOR CONSTRUCTION
 DATE 7-31-81 GBB

37651	PRIMARY GAS COOLERS - FDN'S
37689	GAS PIPING SUPTS @ PRIMARY COOLERS - FDN'S
37692	YARD PIPING SUPPORTS - FDN'S & VALVE PITS
37693	YARD PIPING SUPPORTS - STEELWORK
37687	GAS PIPING SUPPORTS @ PRIMARY COOLERS
37650	LIQ. & TAR HAND. - GEN. FDN. PLAN
37615	CIRC. LIQ. PIPING, PRIM. GAS COOLERS - PLAN
40449	SUPTS FOR 36" GAS LINE & 14" STEAM LINE - FDN'S
SKF-	CIRC. LIQ. DECANTER - PLAN, EL SECT DETS.

REFERENCE DRAWINGS LISTED ABOVE

Interlake, Inc.

EC-7004
 CIRCULATING LIQUOR DECANTER
 FOUNDATION
 PLAN, SECTIONS & DETAILS

REVISIONS 7-31-81

NOTE: This drawing (for print) is the property of Interlake, Inc. U.S.A. and shall not be traced, or reproduced in any manner, nor used for any purpose whatsoever except by written permission of Interlake, Inc.

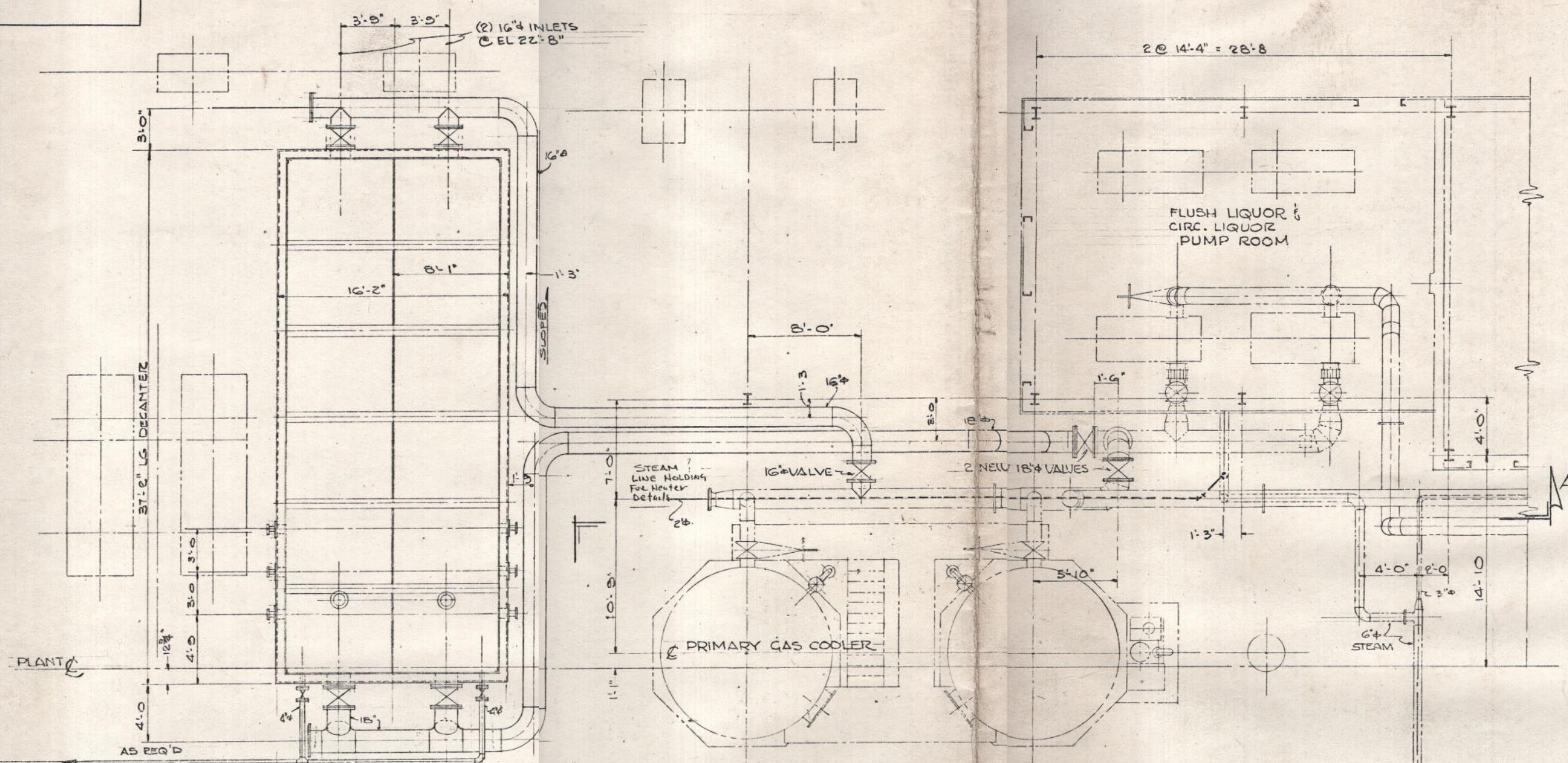
DO NOT SCALE WORK TO DIMENSIONS

DR	GBB/DJ	CH	
CH		APP	

C-6403

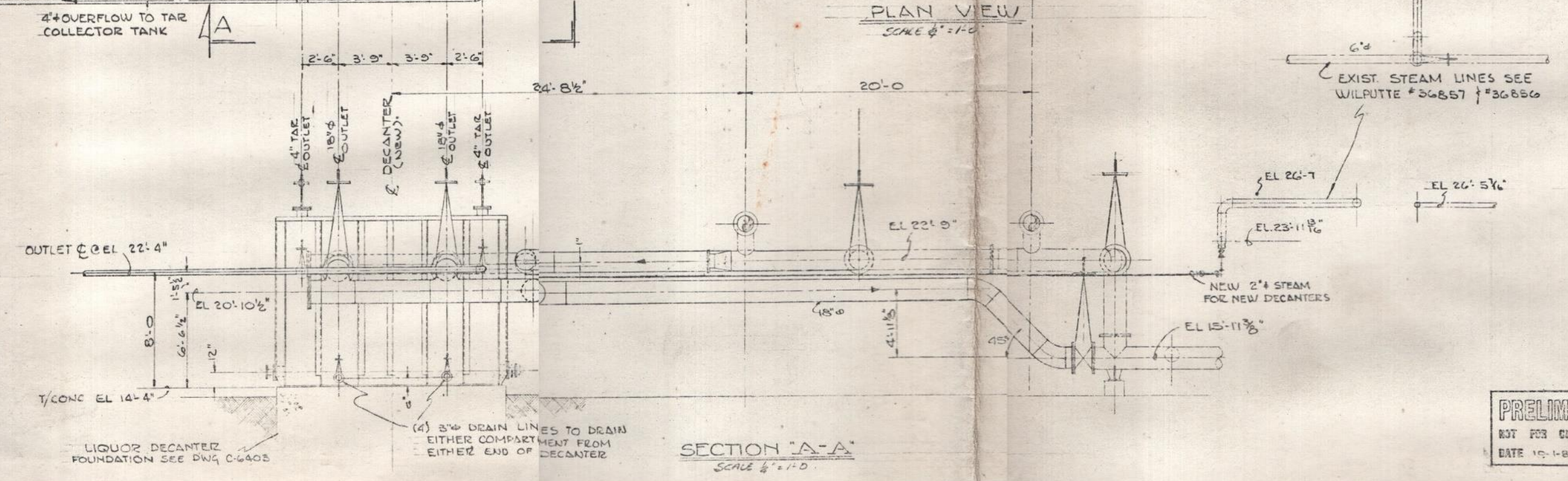
SECT'S
A-A
B-B
C-C
D-D
E-E
F-F
G-G
H-H
J-J
K-K
L-L
M-M

BILL OF MATERIAL		
ITEM NO.	NO. REQ'D	DESCRIPTION



PLAN VIEW
SCALE 1/4" = 1'-0"

- GENERAL NOTES
1. ALL PROCESS PIPING TO SCH 40 ASTM-A 53
 2. " VALVES TO BE CRANE #475 1/2
 3. 125 POUND IRON BODY WEDGE GATE VALVE.
 3. CONTRACTOR TO PROVIDE ADEQUATE PIPE SUPPORTS FOR ALL PIPE RUNS.



SECTION "A-A"
SCALE 1/4" = 1'-0"

EXIST STEAM LINES SEE WILPUTTE #36857 & #36856

WILPUTTE #37615	PLAN PRIMARY GAS COOLERS
" 37616	SECT. " " "
" 37617	" " " "
" 36856	STEAM PIPING
" 36857	STEAM PIPING
SKF	DETAILS CIRCULATING LIQUOR DECANter
C-6403	DECANter FOUNDATION
REFERENCE DRAWINGS LISTED ABOVE	

Interlake, Inc.

PRELIMINARY
NOT FOR CONSTRUCTION
DATE 10-1-81

EG-7006
CHICAGO COKE PLANT BY-PRODUCTS
CIRCULATING LIQUOR DECANter
PIPING
PLAN & ELEVATION

REVISIONS

NOTE: This drawing for print is the property of Interlake, Inc. U.S.A. and shall not be used, reproduced, or transmitted in any manner, nor used for any purpose whatsoever except by written permission of Interlake, Inc.

DO NOT SCALE WORK TO DIMENSIONS

DR: JAM 10-1-81
CH: [Signature]
APP: [Signature]
C-6408