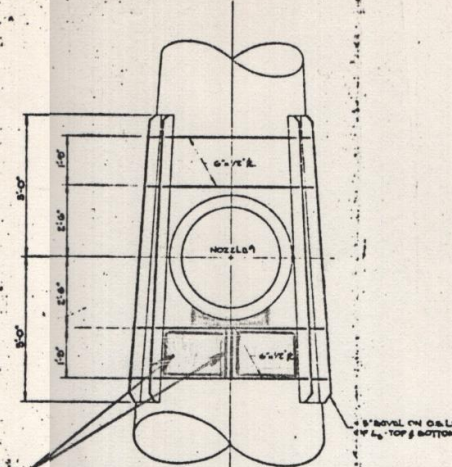
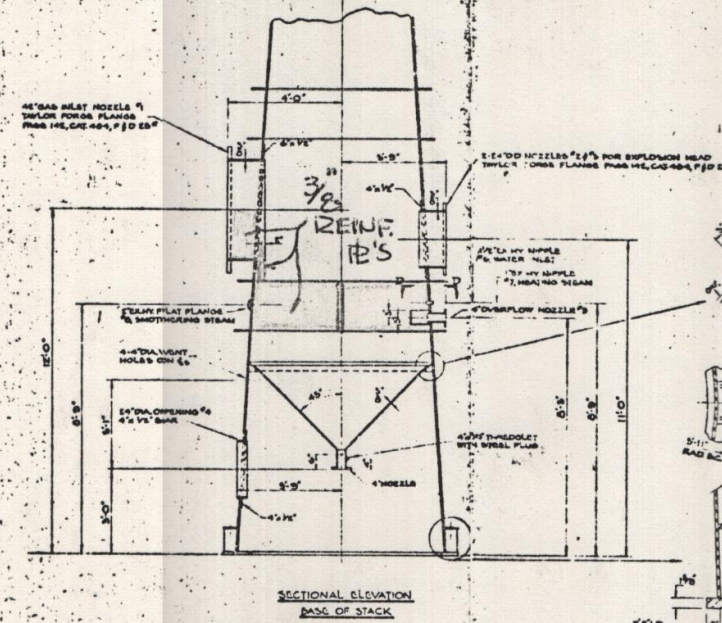


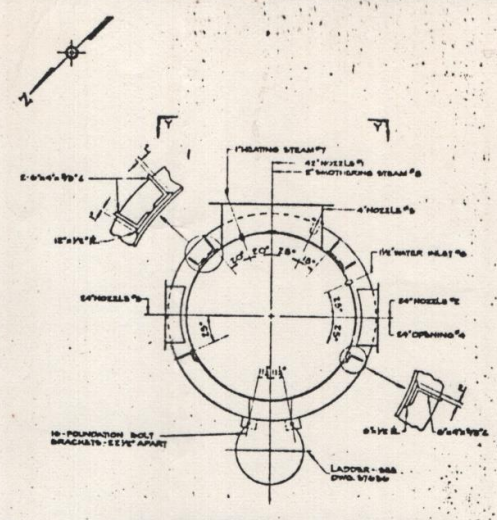
MAX. DEFLECTION DUE TO WIND = 16 1/2"



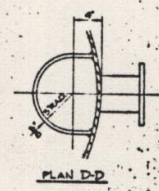
8" REINF. #3 & STIFFENERS ADDED ALL AROUND



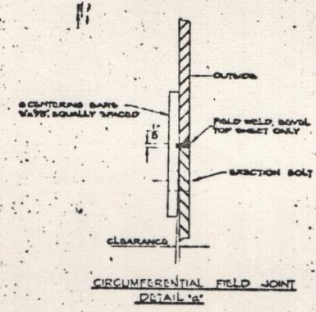
NOTE: STRESSES & DEFLECTION FIGURED ON 20 PSF WIND LOAD PER CHICAGO BLDG CODE.



CIRCULAR LOCATION OF NOZZLES, LADDERS AND FOUNDATION BOLT BRACKETS



PLAN D-D



CIRCUMFERENTIAL FIELD JOINT DETAIL

NOTE: STACK TO BE OF WELDED CONSTRUCTION, USING SHIELDED ARC PROCESS. WELDS TO BE CONTINUOUS UNLESS NOTED OTHERWISE. HULL AND NOZZLE JOINTS TO BE WELDED INWARD AND OUTWARD WELDS FRAGMENTAL. UNLESS NOTED OTHERWISE, PLANNED NOZZLES TO BE 1/2\"/>

REFERENCE DWGS: GAS BLEEDER STACK FOUNDATION 57555 GAS FIRING FROM L.D. SECTION TO GAS HOLDER - PLAN & SECTIONS - 57570 / 57560 GAS BLEEDER STACK PLATFORMS & LADDERS 57550

REPAIRS TO BLEEDER STACK

NOTED PER FIELD INSPECTION

4-6-77

COMPANION DWG. 57626

THE DRAWING IS THE PROPERTY OF WILPUTTE COKE OVEN DIVISION. IT IS TO BE KEPT IN THE OFFICE OF THE DRAWING ENGINEER. IT IS TO BE RETURNED TO THE OFFICE OF THE DRAWING ENGINEER UPON THE COMPLETION OF THE WORK. IT IS NOT TO BE REPRODUCED OR COPIED IN ANY MANNER WITHOUT THE WRITTEN PERMISSION OF THE DRAWING ENGINEER. IT IS TO BE KEPT IN THE OFFICE OF THE DRAWING ENGINEER UPON THE COMPLETION OF THE WORK. IT IS NOT TO BE REPRODUCED OR COPIED IN ANY MANNER WITHOUT THE WRITTEN PERMISSION OF THE DRAWING ENGINEER.	WILPUTTE COKE OVEN DIVISION Allied Chemical & Dye Corporation COKE OVENS AND COAL CHEMICAL PLANTS 46 RECTOR STREET NEW YORK, N. Y.	INTERLAKES IRON CORPORATION SOUTH CHICAGO, ILLINOIS GAS BLEEDER STACK 37588
---	--	--