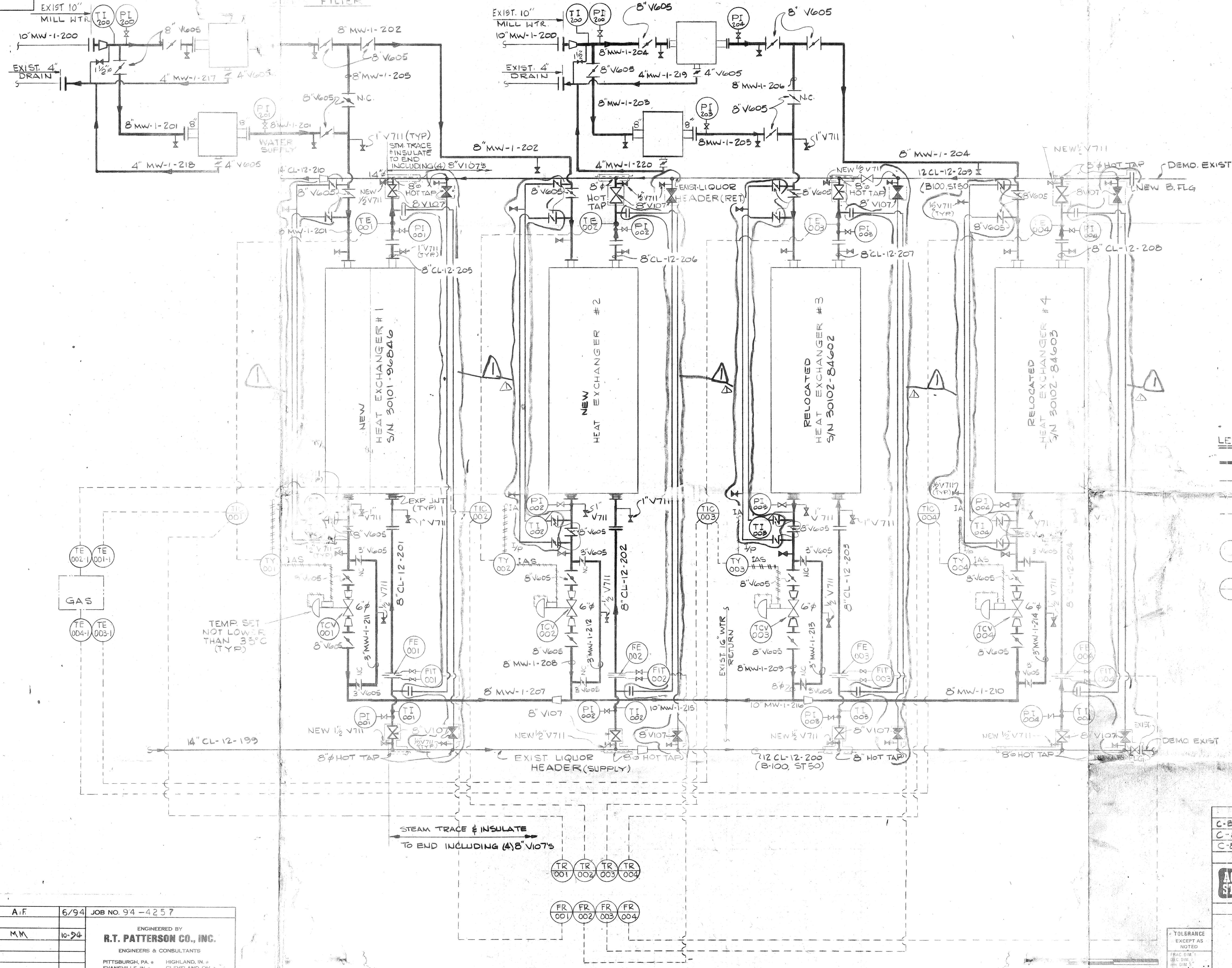


1979-C

BILL OF MATERIAL	
ITEM NO.	DESCRIPTION

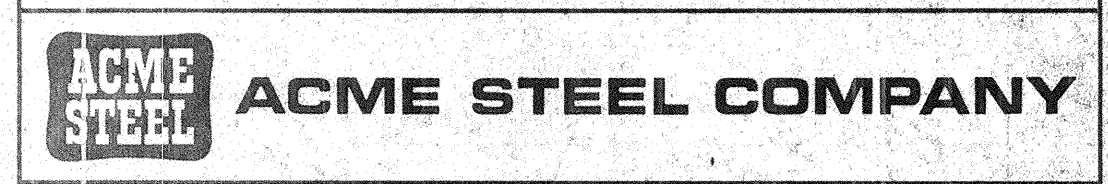
SECTS
A-A
B-B
C-C
D-D
E-E
F-F
G-G
H-H
J-J
K-K
L-L
M-M



- LEGEND:**
- NEW PIPE
 - EXISTING PIPE
 - PNEUMATIC SIGNAL
 - ELECTRICAL SIGNAL
 - INDICATES LOCAL MOUNTED INSTRUMENT
 - ⊖ INDICATES FRONT PANEL MOUNTED INSTRUMENT (LOCATED AT PRIMARY COOLER CONTROL RM.)

FOR CONSTRUCTION
OCT 15 1996

- C-8144 PIPING - SECTIONS
 - C-8143 PIPING PLAN & SECTIONS
 - C-8151 LINE DESIGNATION TABLES
- REFERENCE DRAWINGS LISTED ABOVE



CHICAGO COKE PLANT
UPGRADE TEMPERATURE CONTROL
OF HEAT EXCHANGERS
PIPING & INSTRUMENT DIAGRAM

DRAWN BY:	A.F.	6/94	JOB NO. 94-4257
DESIGNED BY:			
CHECKED BY:	M.M.	10-94	
APPROVED BY:			
APPROVED BY:			
APPROVED BY:			

ENGINEERED BY
R.T. PATTERSON CO., INC.
ENGINEERS & CONSULTANTS
PITTSBURGH, PA. * HIGHLAND, IN. *
EVANSVILLE, IN. * CLEVELAND, OH. *

REVISIONS	▲ JUMPER PIPING ADDED
	RT/AF 10-15-96

NOTE: THIS DRAWING AND ALL INSTRUMENTS SHALL BE FOR CONSTRUCTION PURPOSES ONLY.

TOLERANCE EXCEPT AS NOTED
FRAC DIM = 1/16" DIM = .005" ANGLES = 1/4"

DR.	A.F.F.	CH.	MM	REV.	
SCALE	NONE	APP.			C-5767