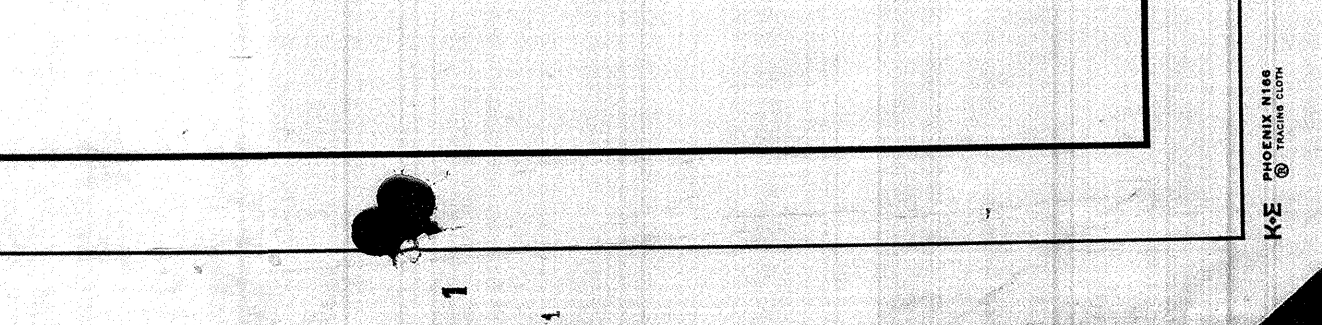
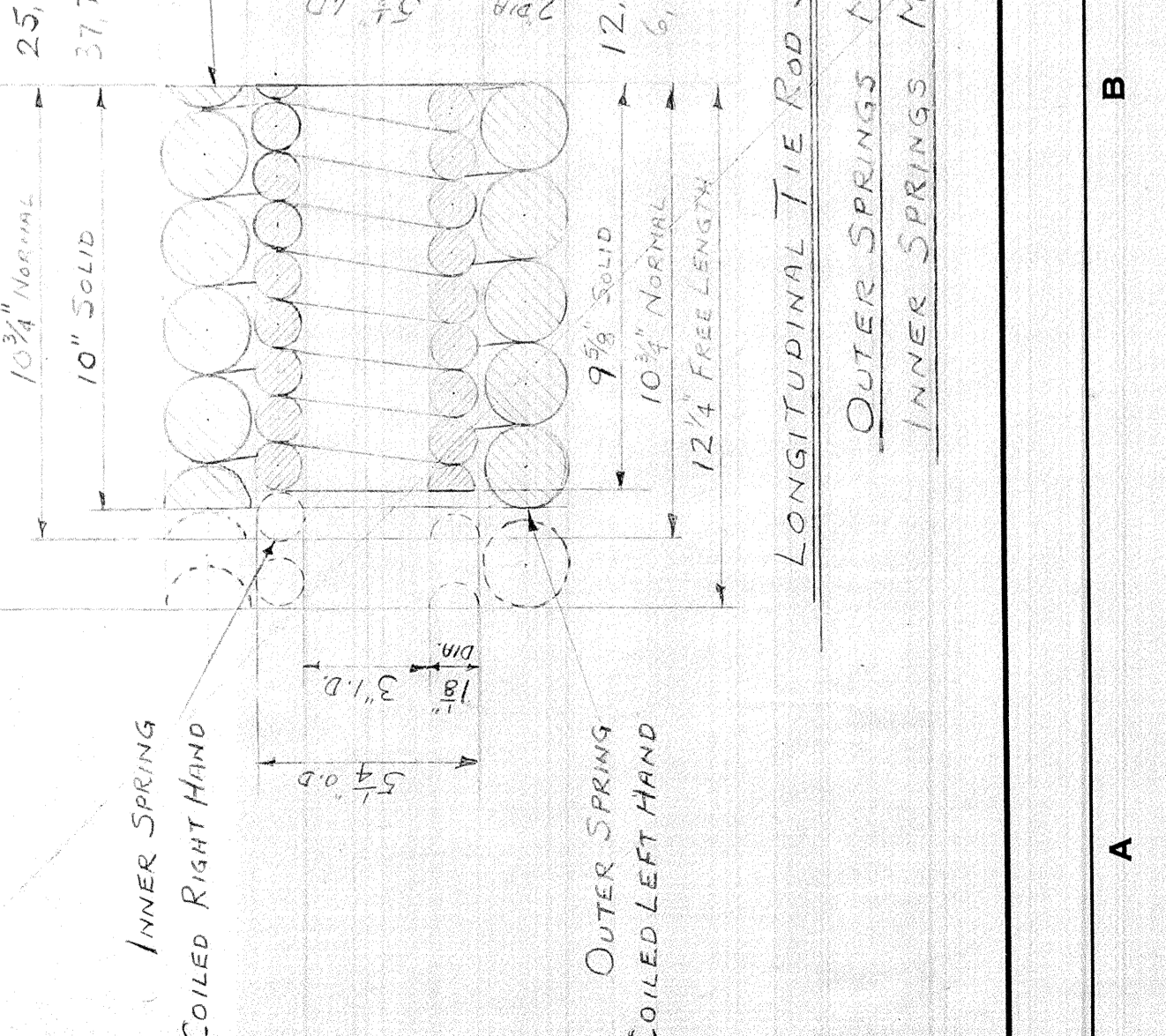
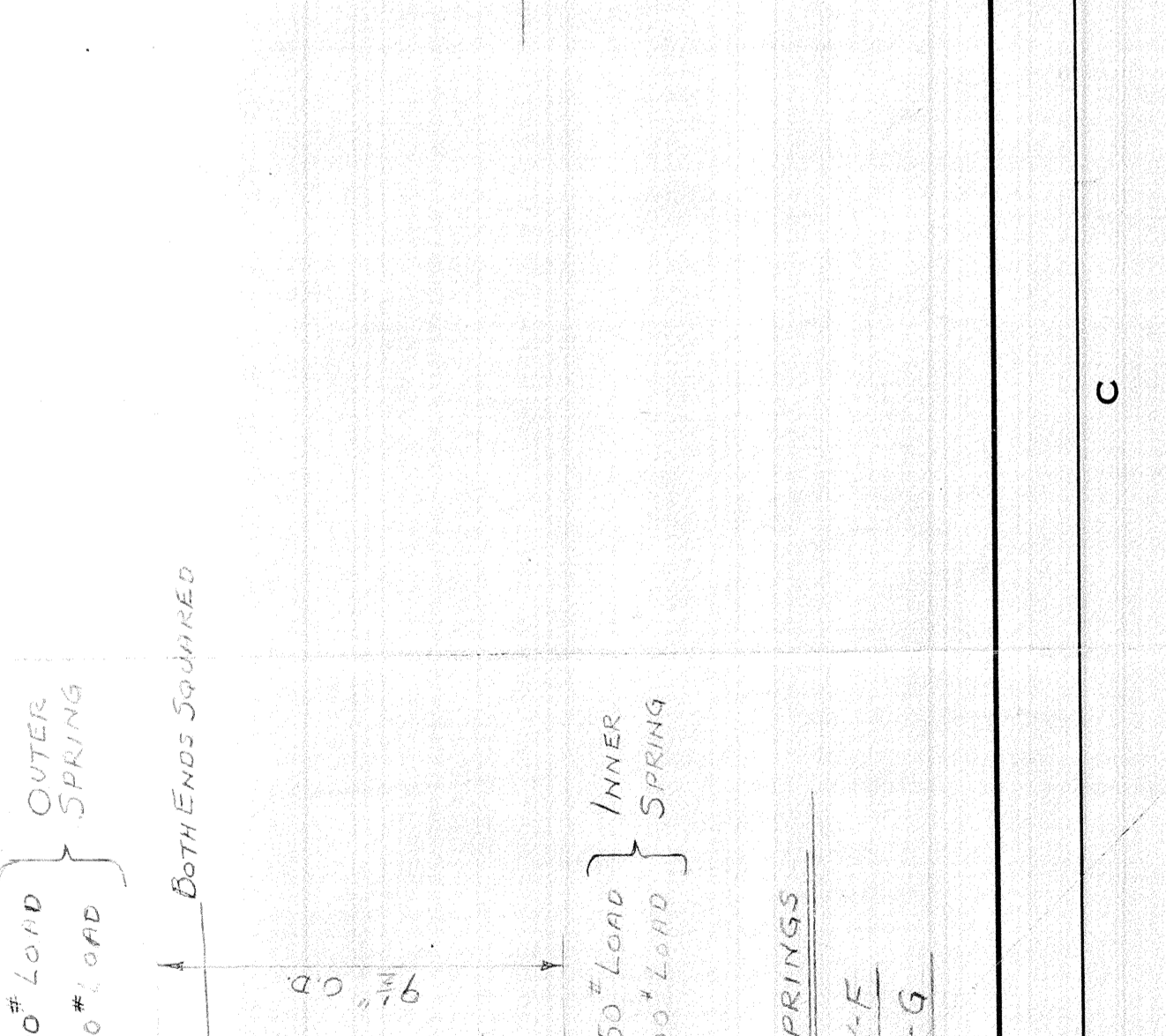
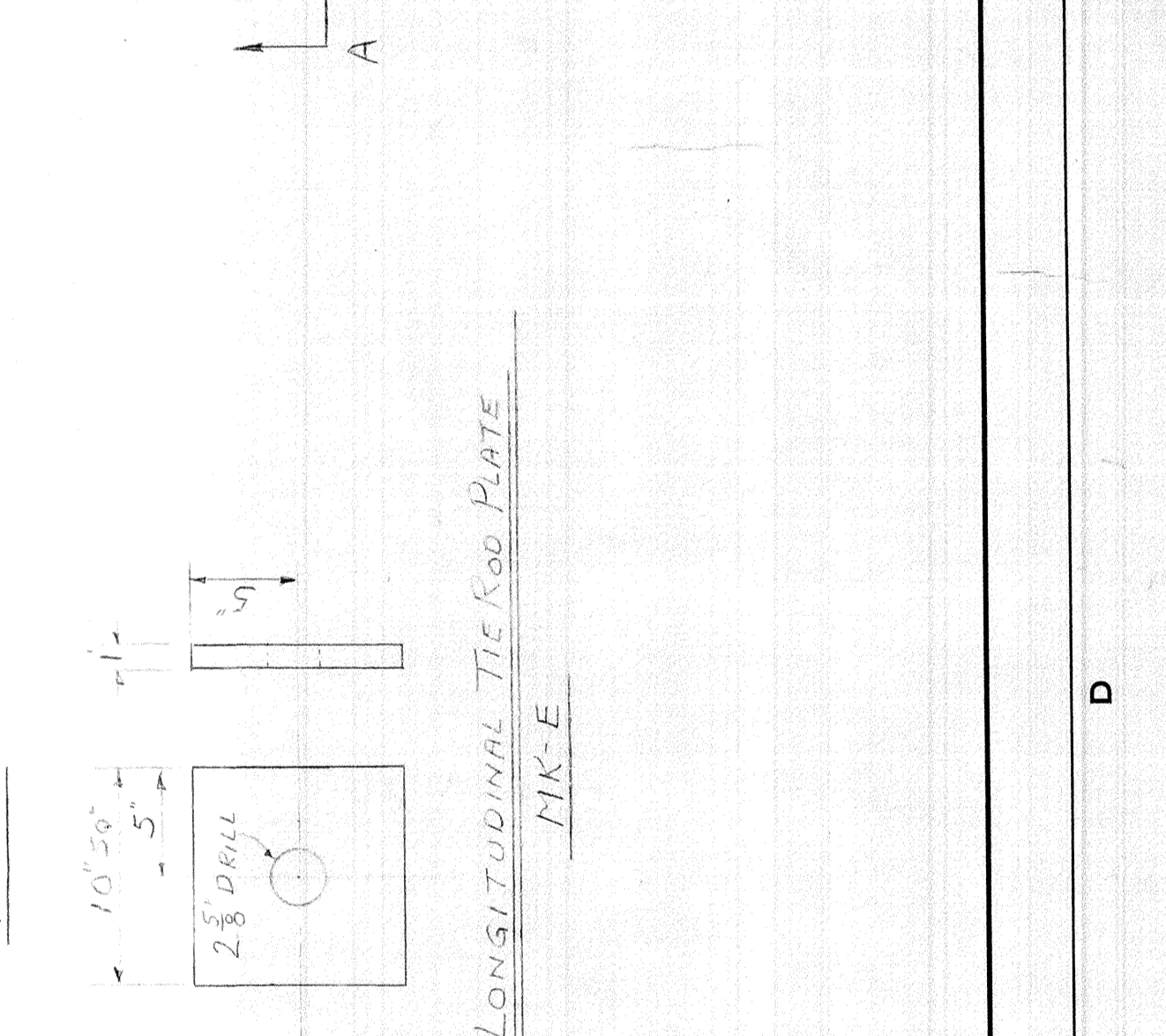
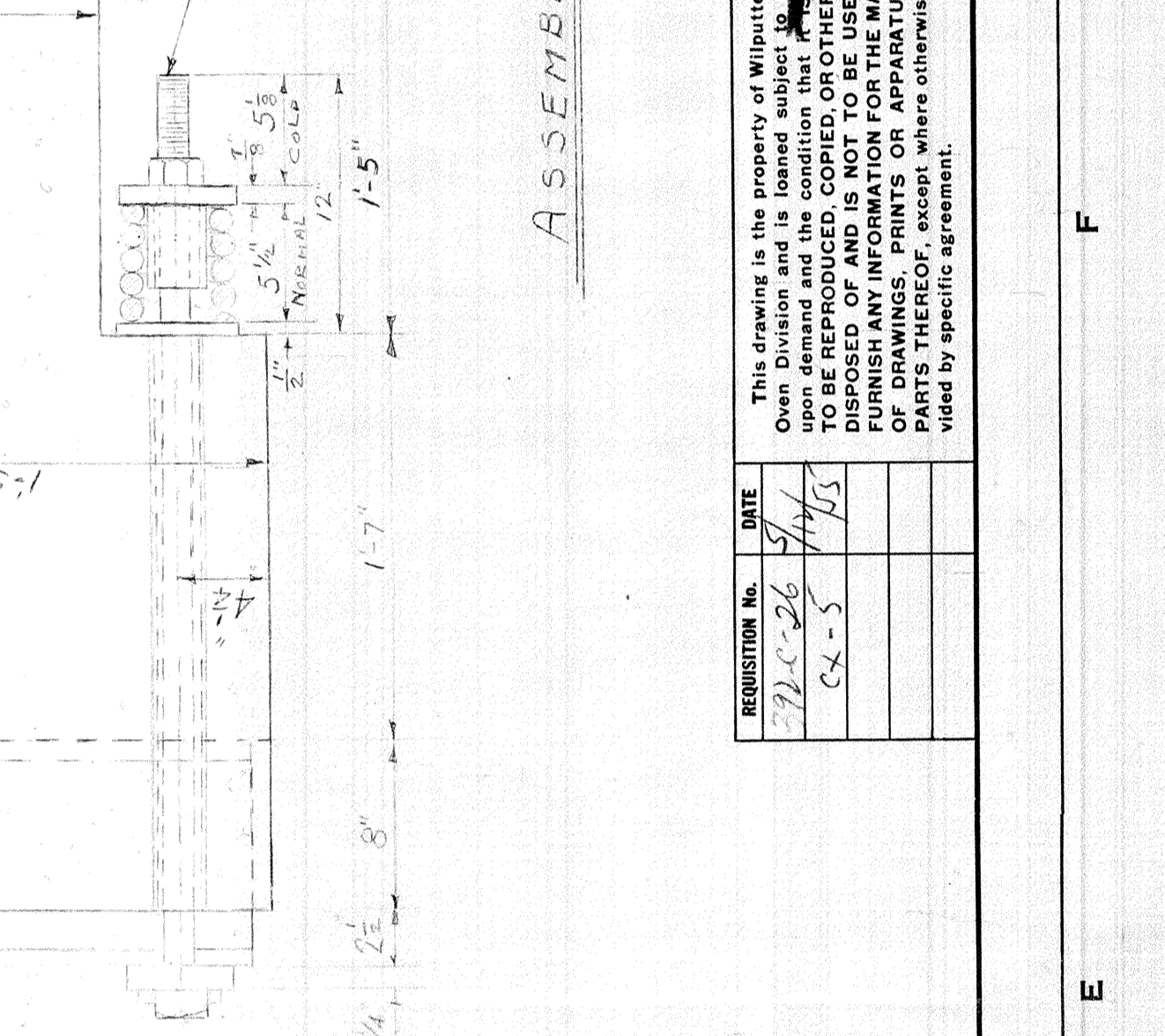
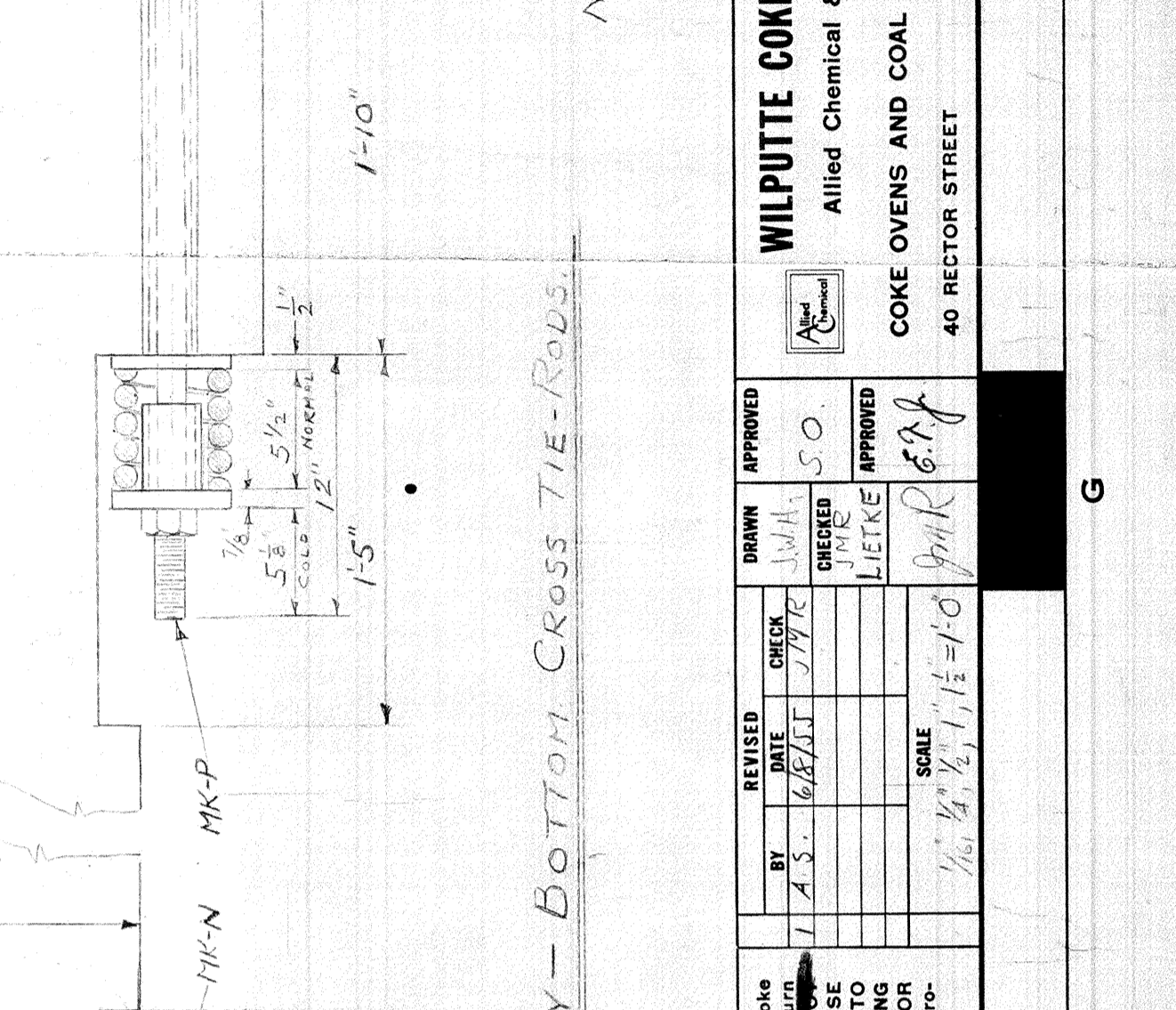
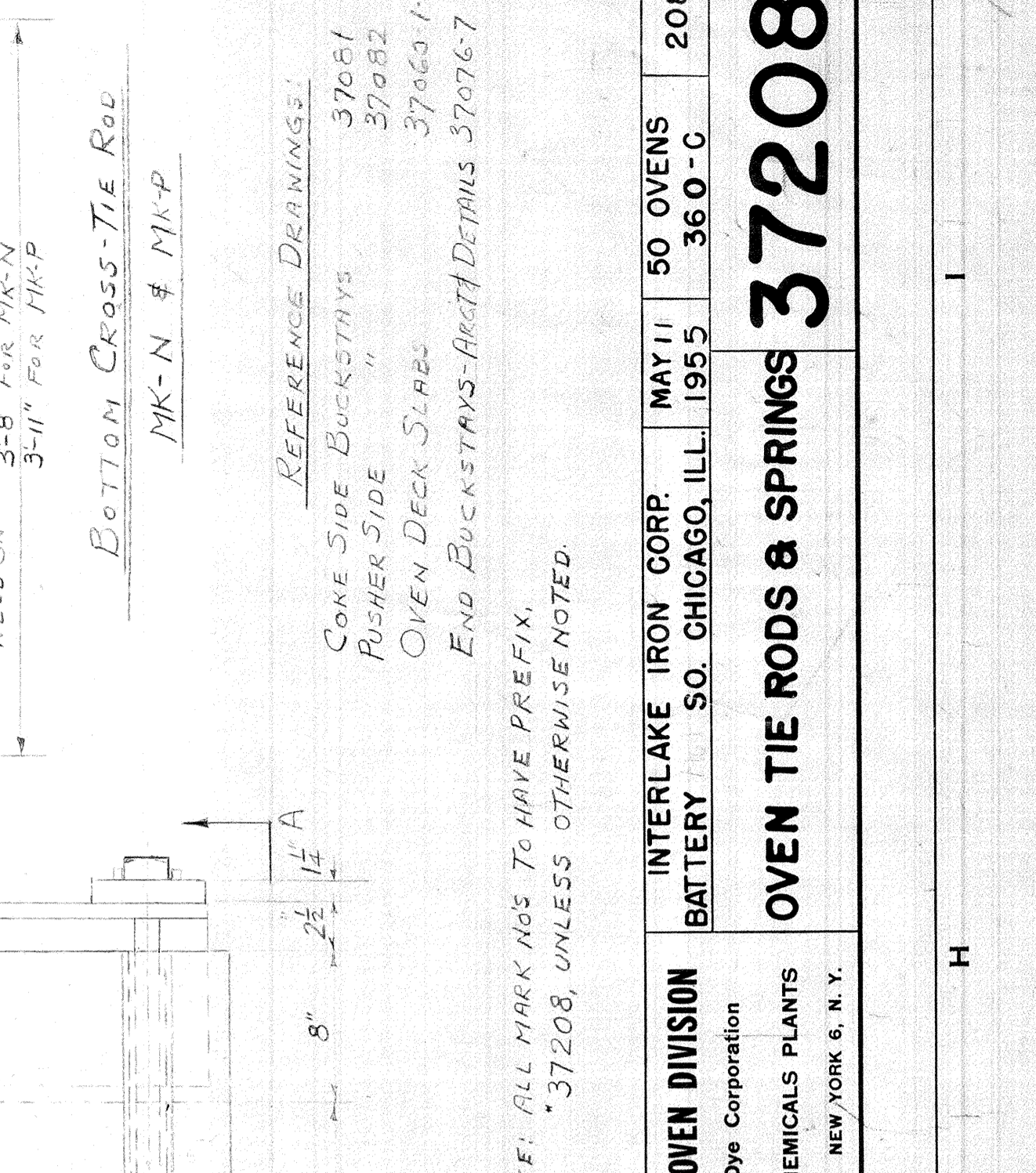
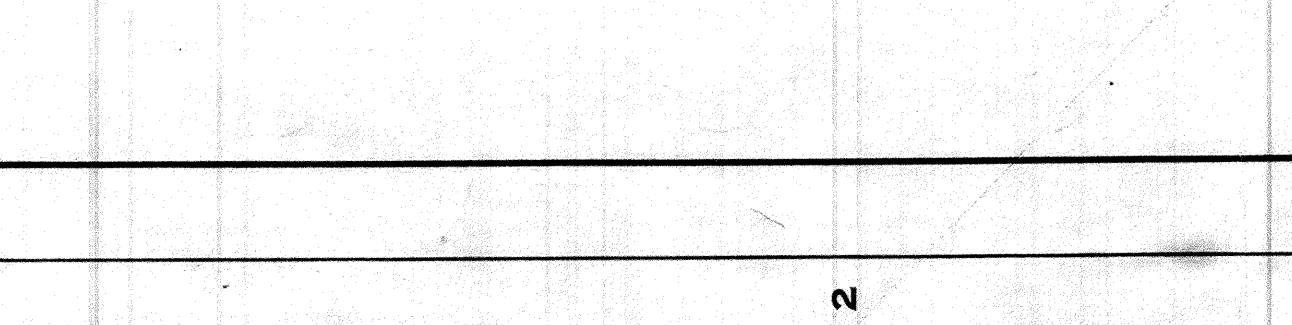
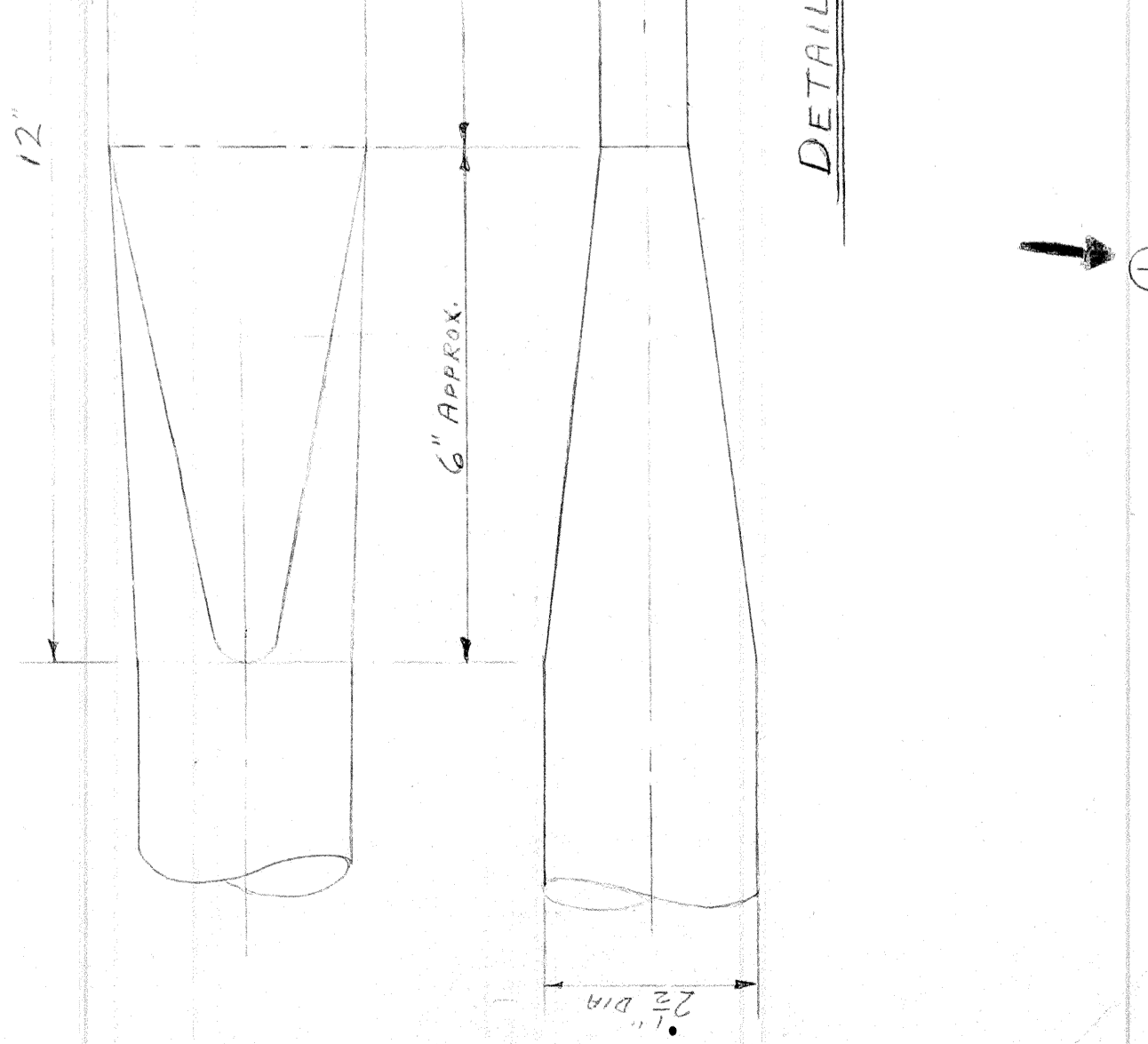
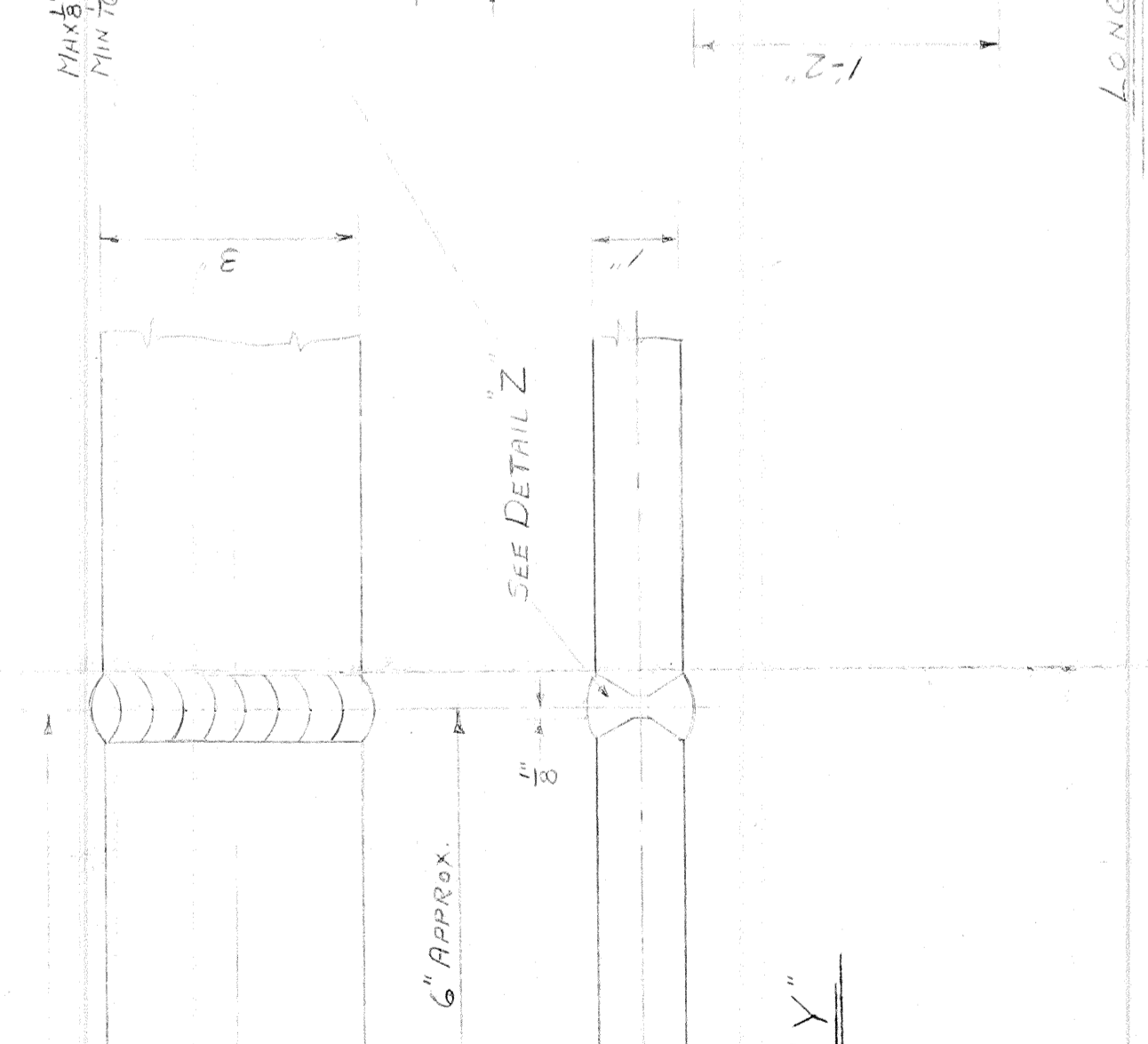
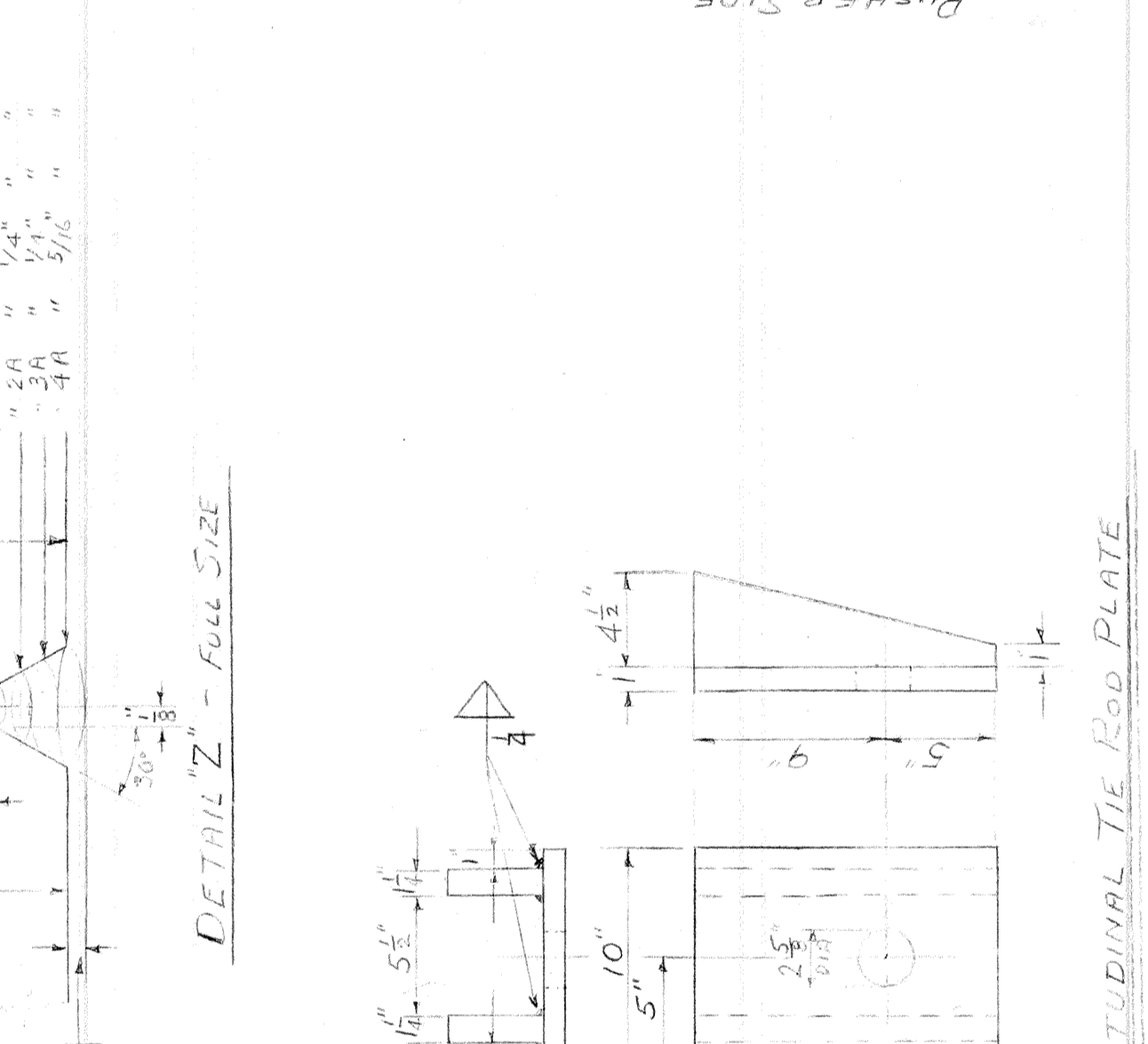
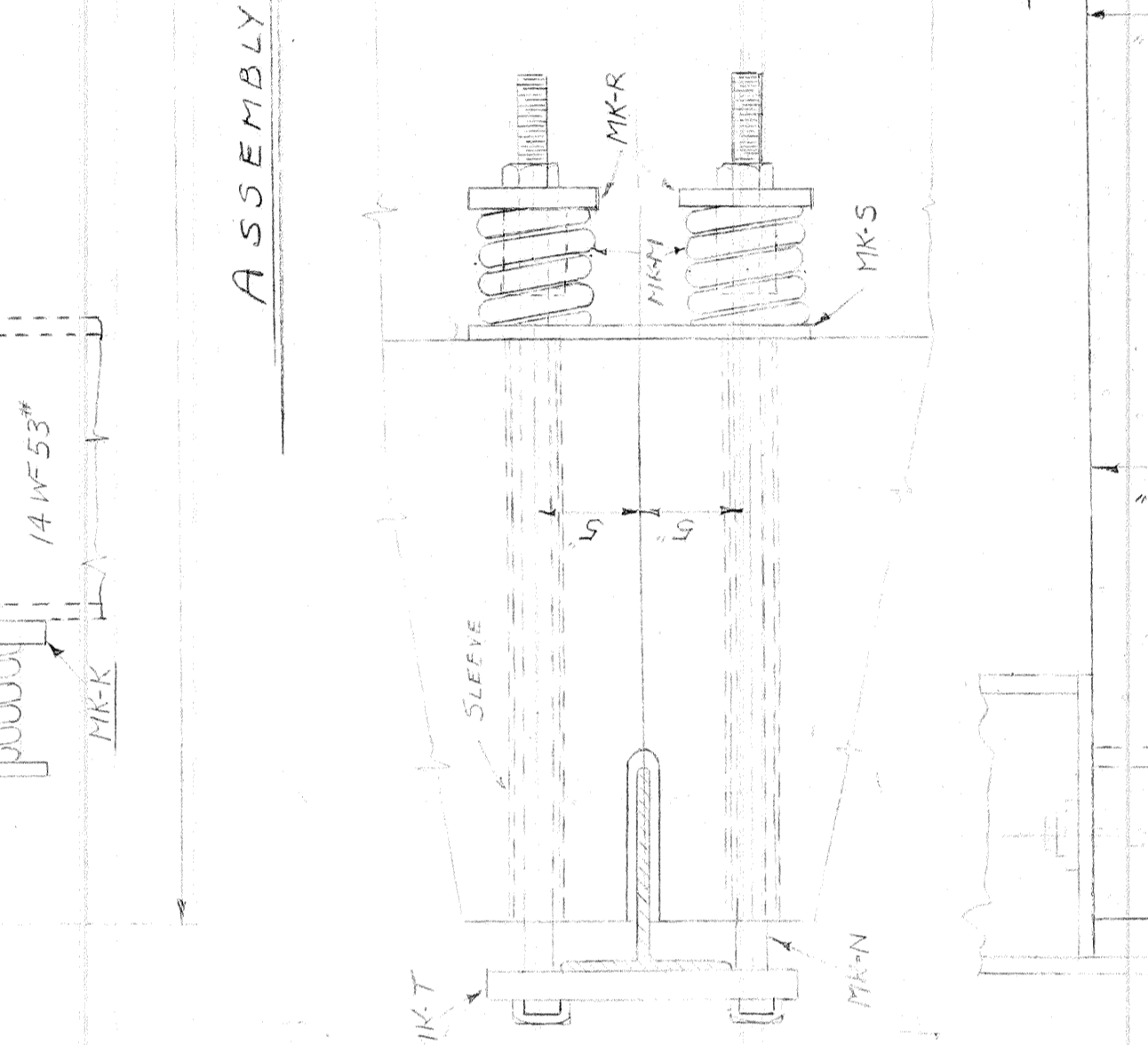
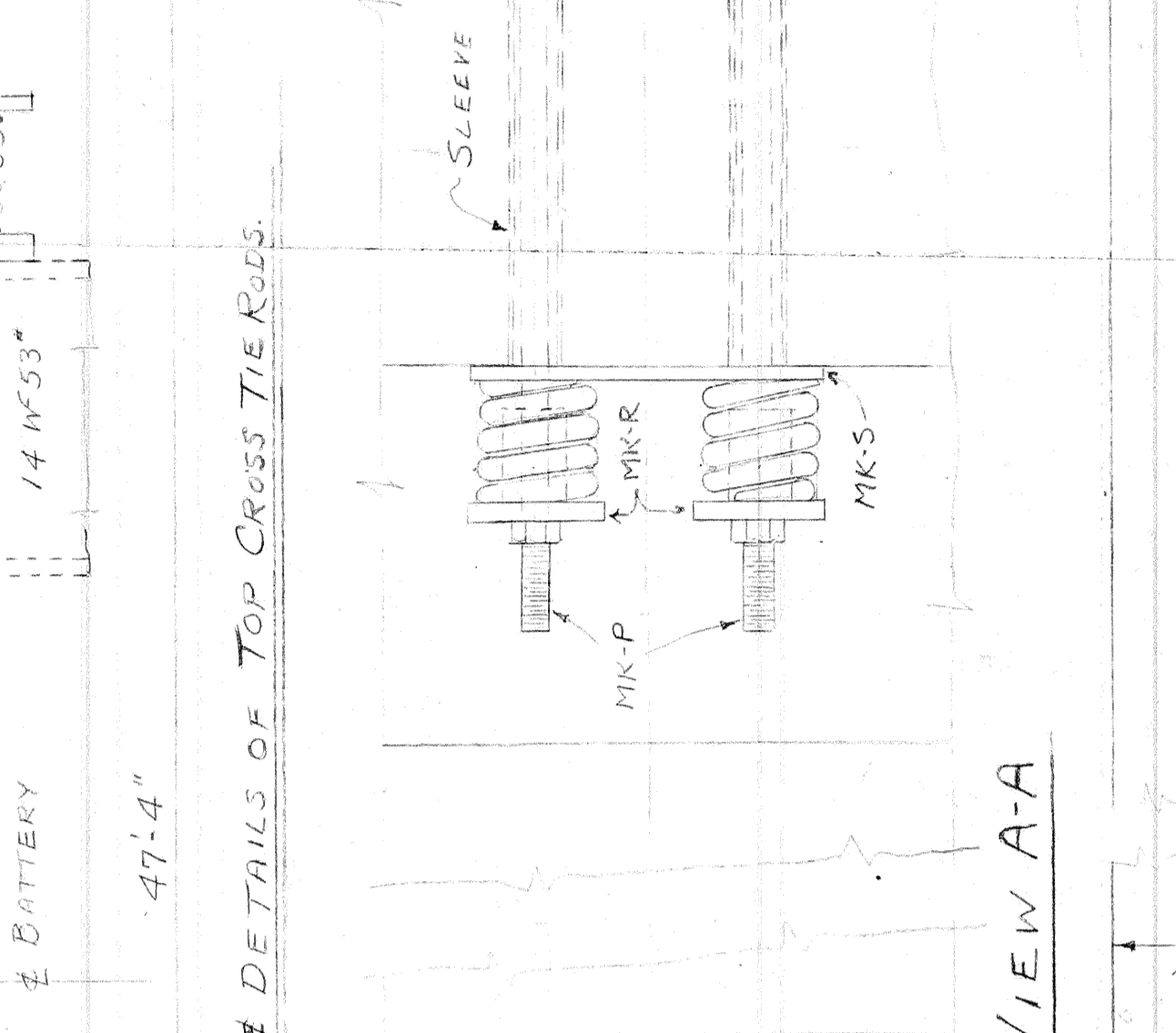
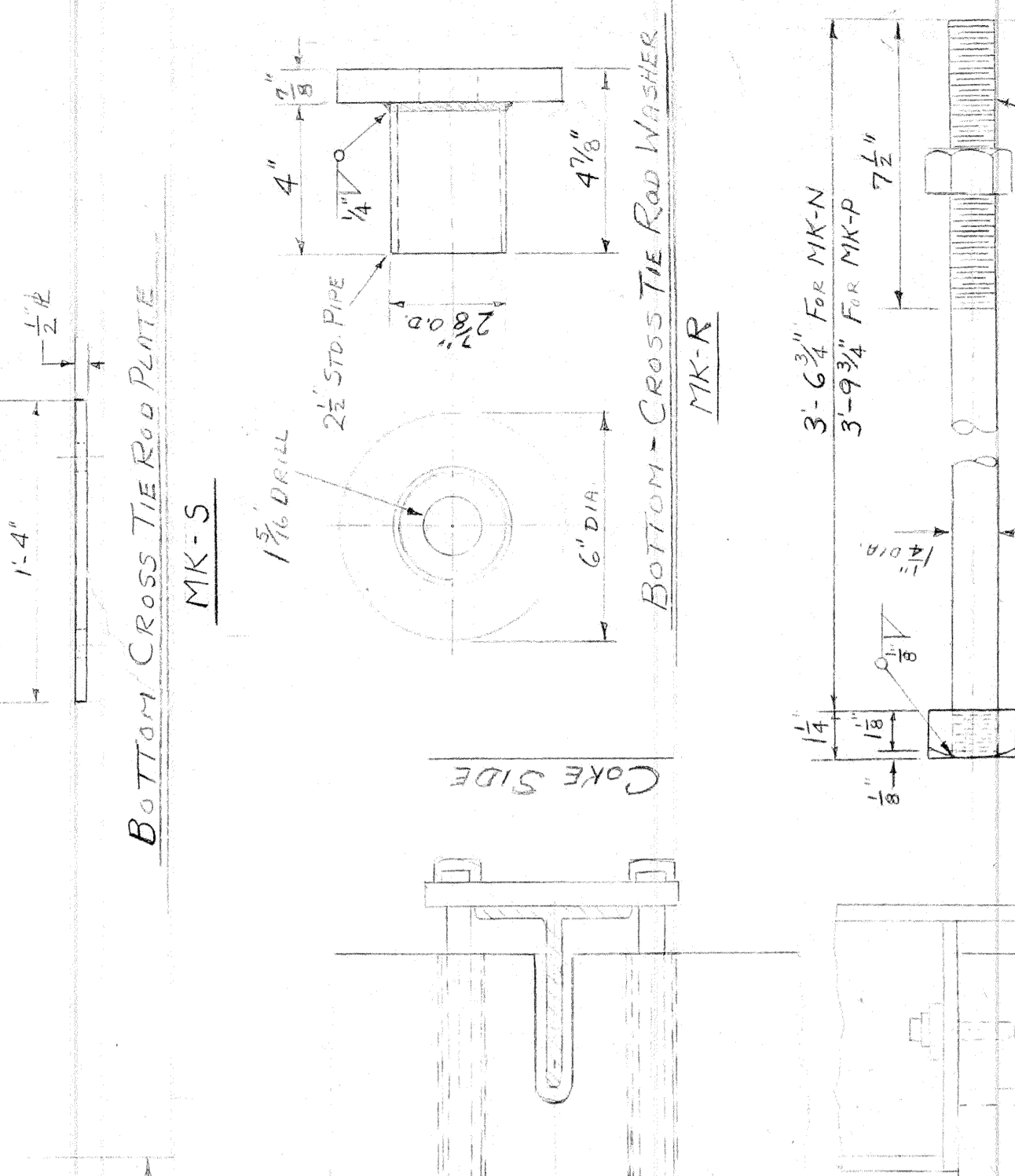
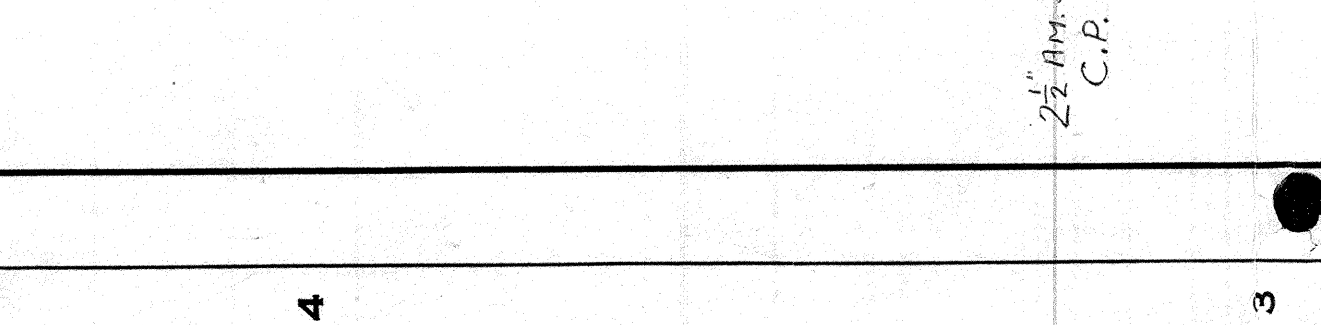
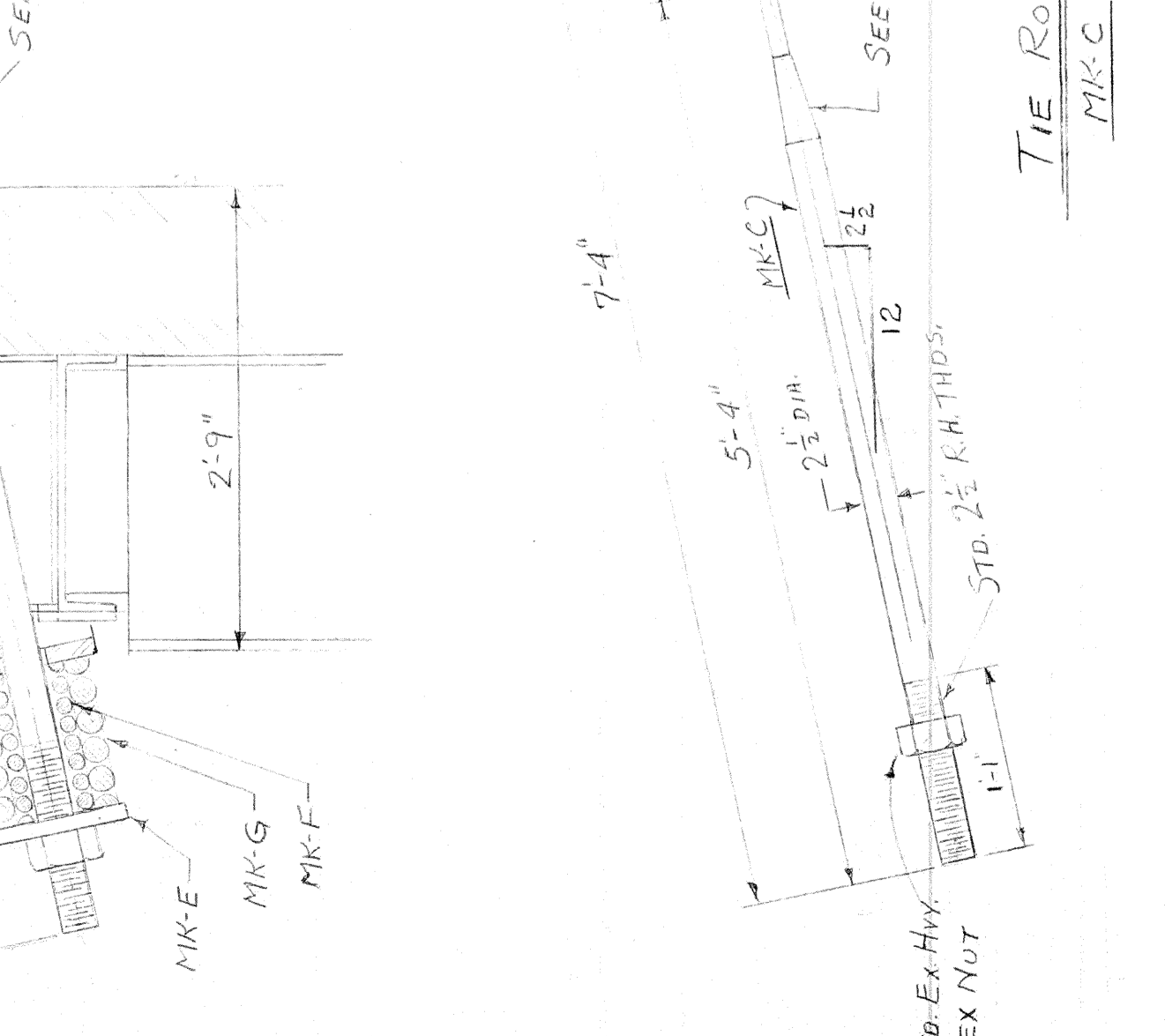
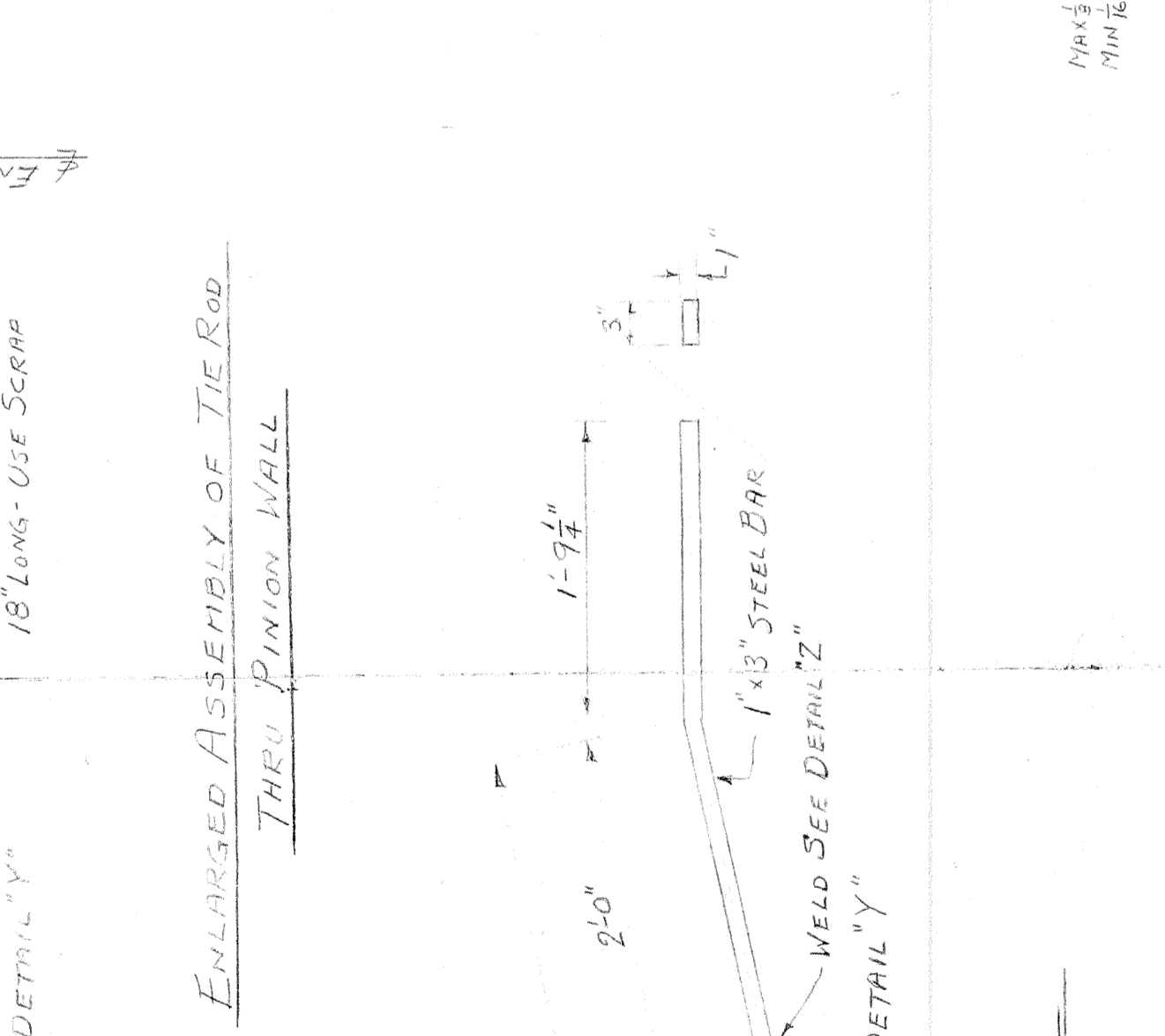
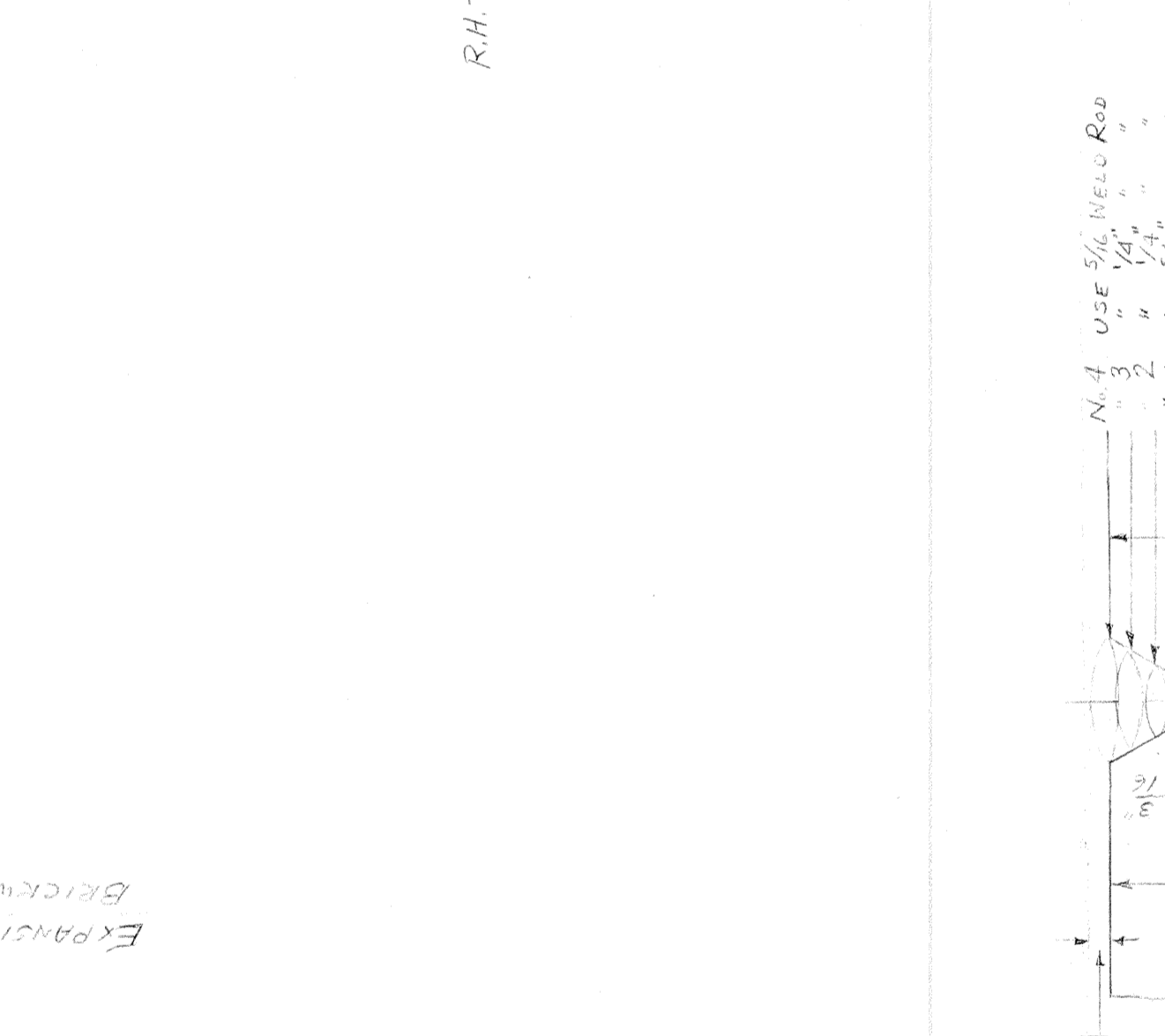
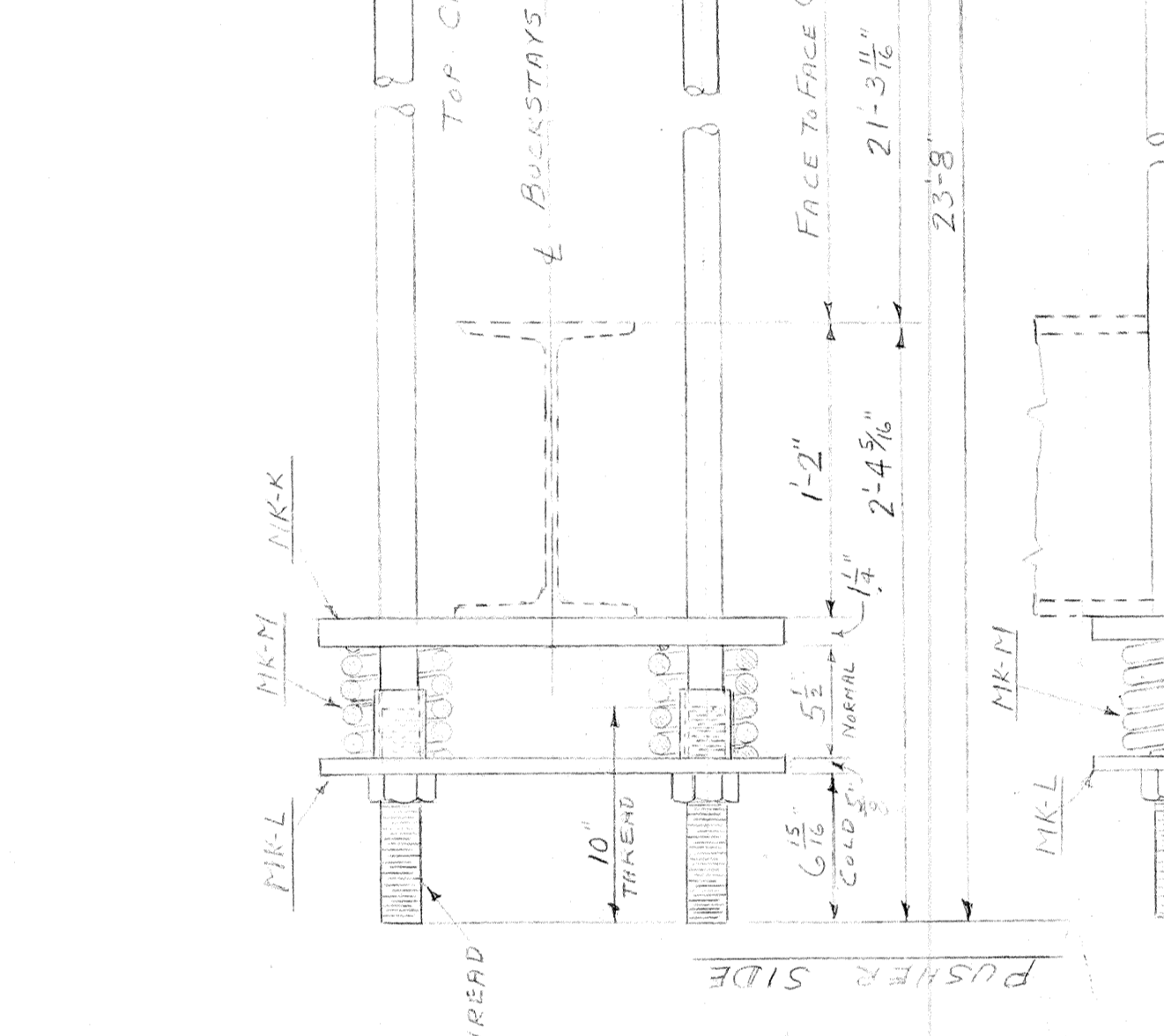
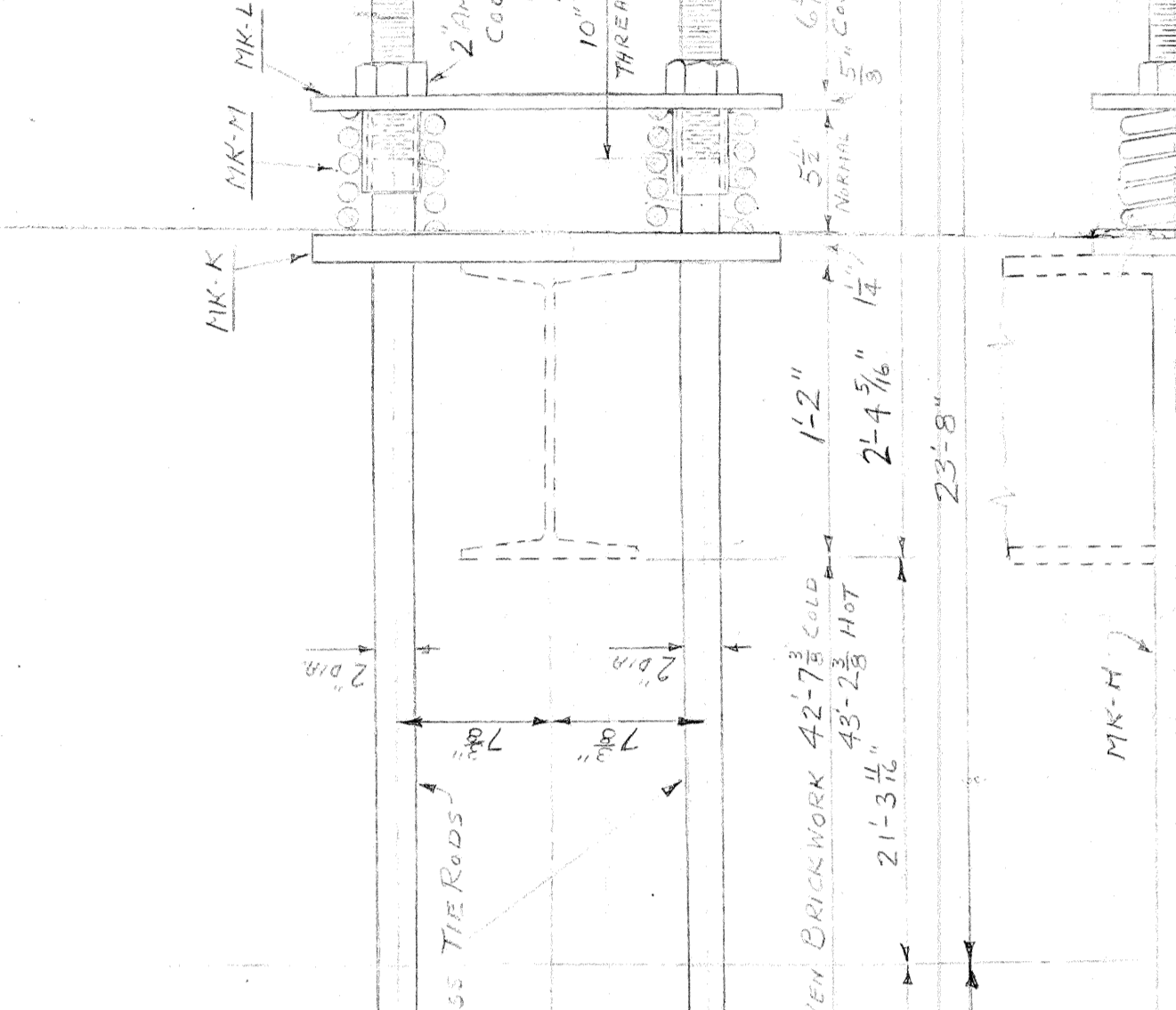
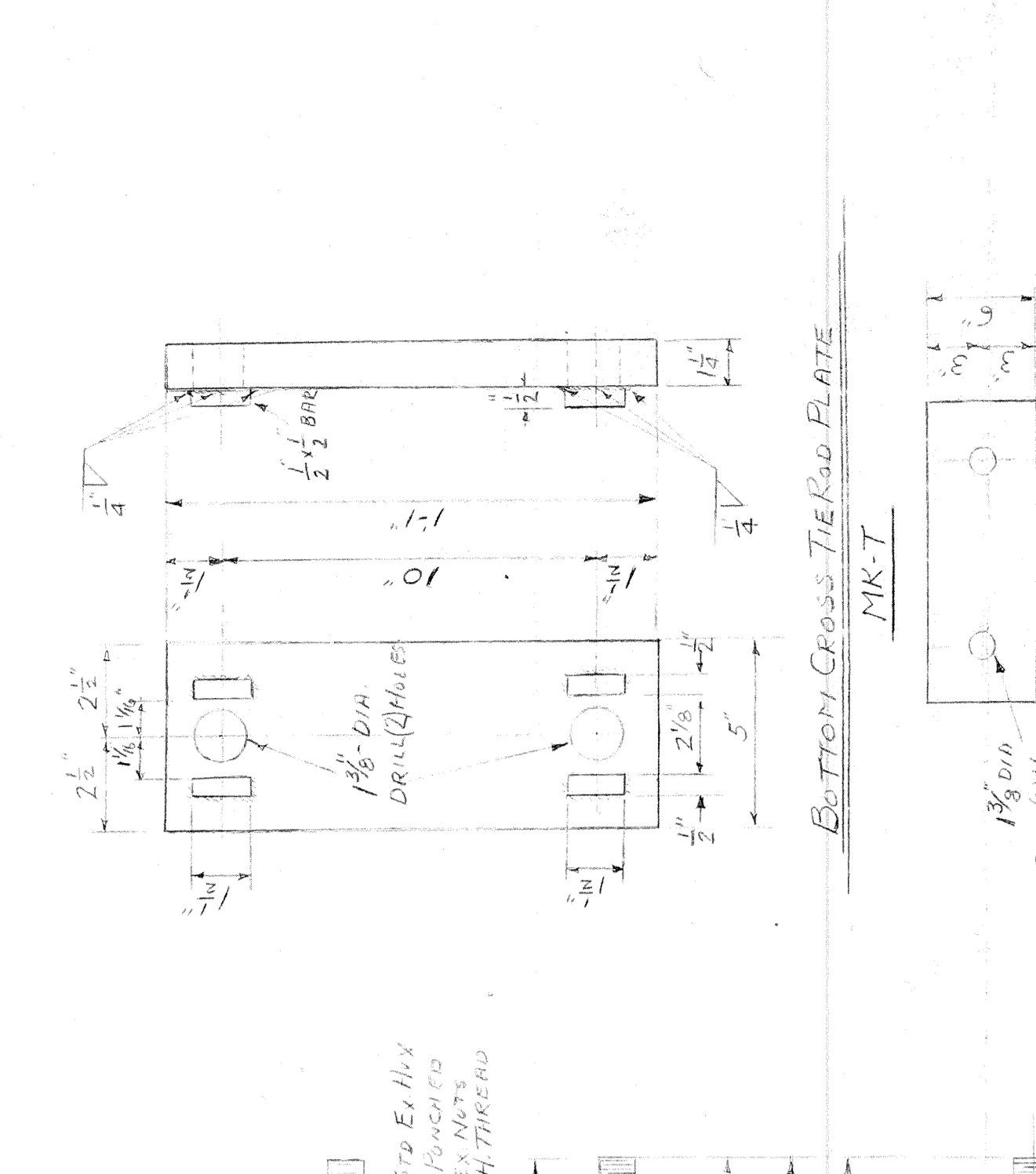
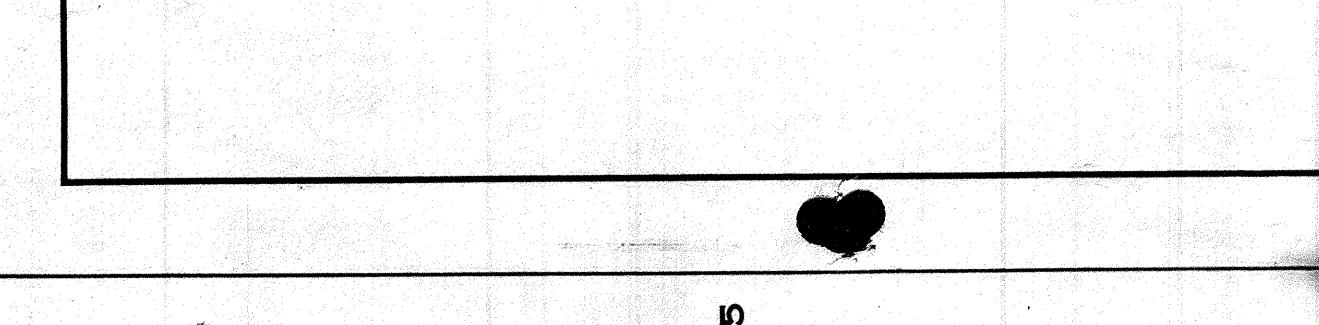
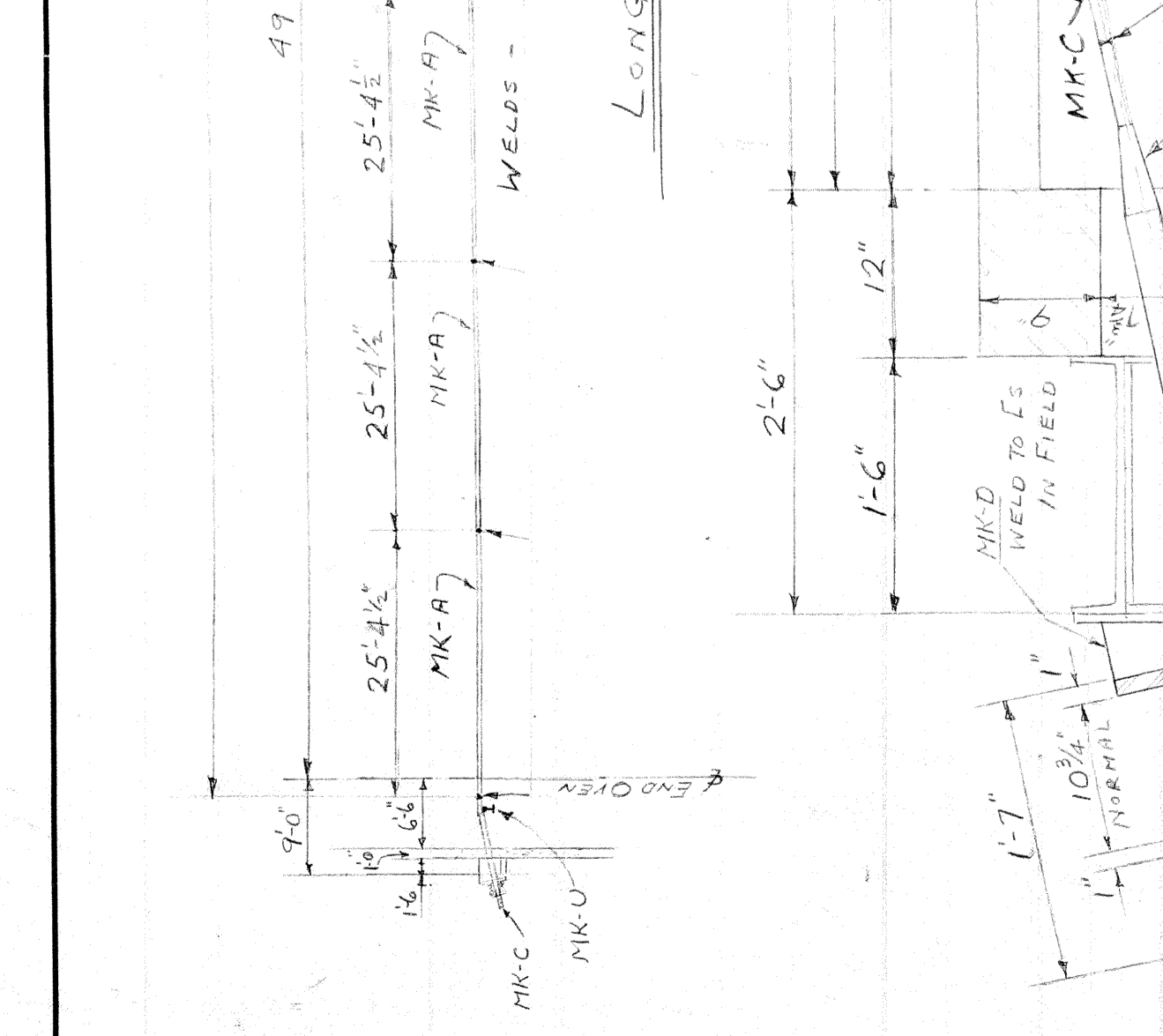
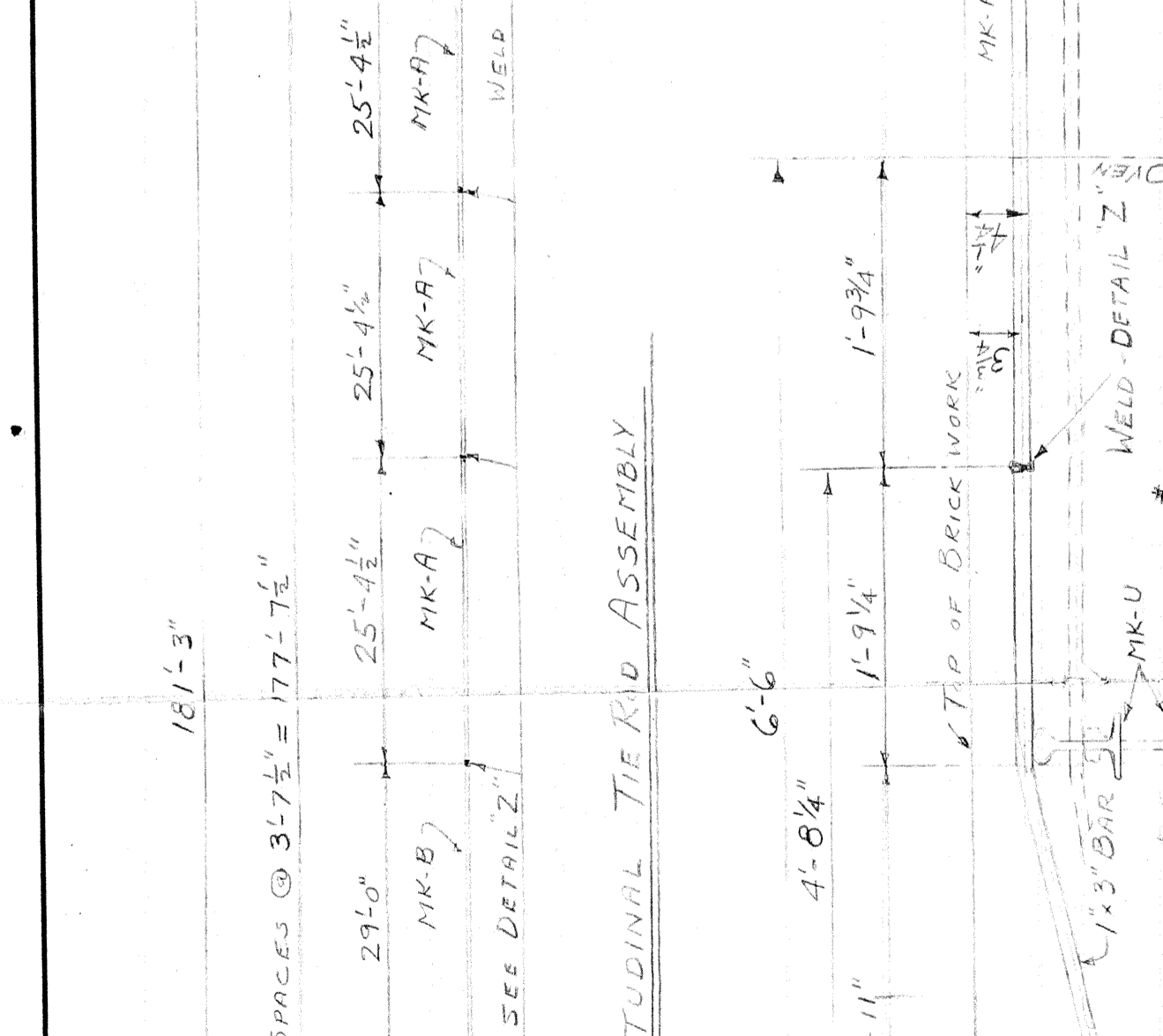
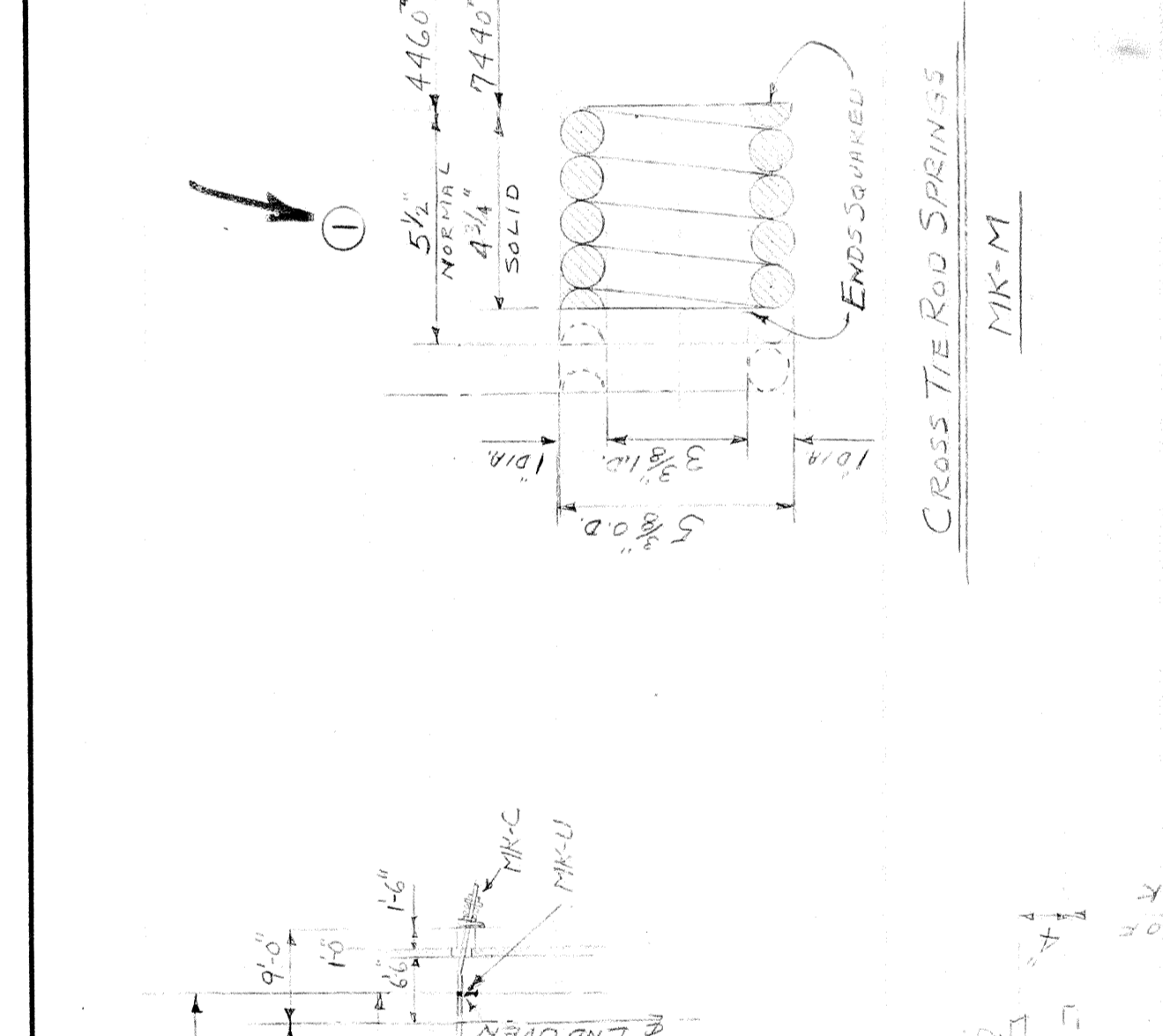
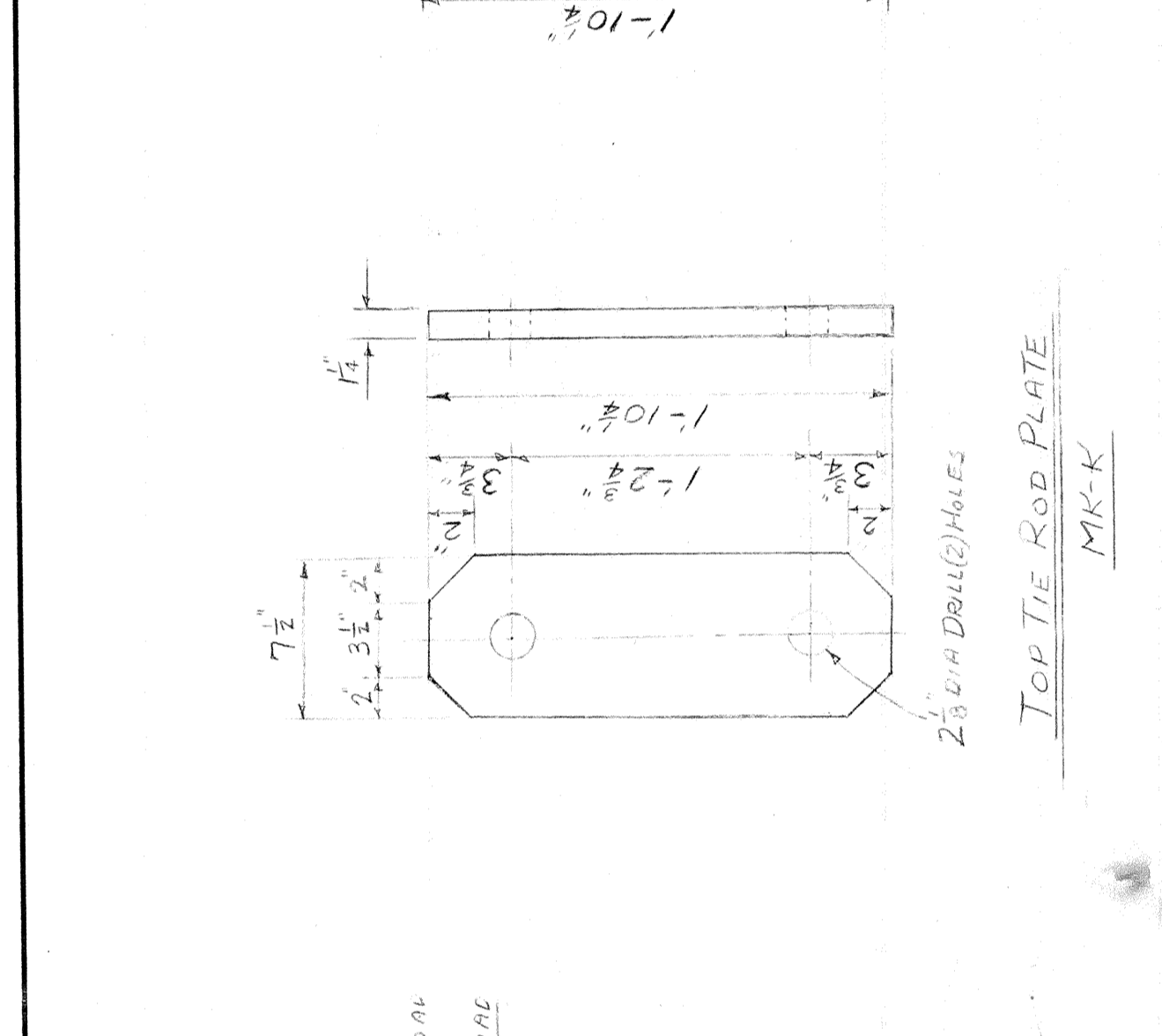
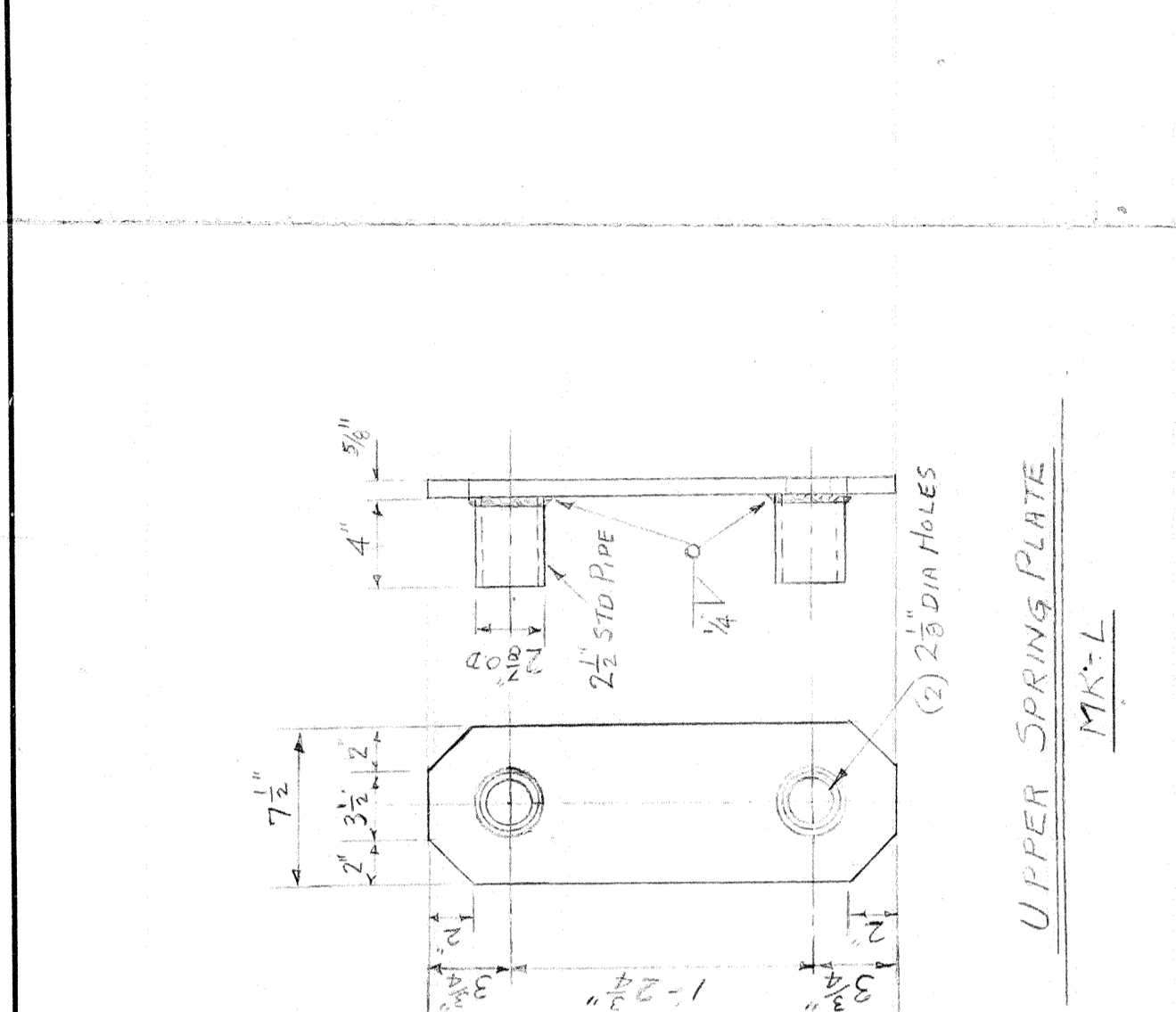


MARK	No. RECD	DESCRIPTION	QUANTITY	MATERIAL	CODE
MK-A	1793	2 3/4" DIA. STEEL BAR	1	STEEL	A-14
MK-B	1794	3 1/2" DIA. STEEL BAR	1	STEEL	A-14
MK-C	1795	4 1/2" DIA. STEEL BAR	1	STEEL	A-14
MK-D	1796	5 1/2" DIA. STEEL BAR	1	STEEL	A-14
MK-E	1797	6 1/2" DIA. STEEL BAR	1	STEEL	A-14
MK-F	1798	7 1/2" DIA. STEEL BAR	1	STEEL	A-14
MK-G	1799	8 1/2" DIA. STEEL BAR	1	STEEL	A-14
MK-H	1800	9 1/2" DIA. STEEL BAR	1	STEEL	A-14
MK-I	1801	10 1/2" DIA. STEEL BAR	1	STEEL	A-14
MK-J	1802	11 1/2" DIA. STEEL BAR	1	STEEL	A-14
MK-K	1803	12 1/2" DIA. STEEL BAR	1	STEEL	A-14
MK-L	1804	13 1/2" DIA. STEEL BAR	1	STEEL	A-14
MK-M	1805	14 1/2" DIA. STEEL BAR	1	STEEL	A-14
MK-N	1806	15 1/2" DIA. STEEL BAR	1	STEEL	A-14
MK-O	1807	16 1/2" DIA. STEEL BAR	1	STEEL	A-14
MK-P	1808	17 1/2" DIA. STEEL BAR	1	STEEL	A-14
MK-Q	1809	18 1/2" DIA. STEEL BAR	1	STEEL	A-14
MK-R	1810	19 1/2" DIA. STEEL BAR	1	STEEL	A-14
MK-S	1811	20 1/2" DIA. STEEL BAR	1	STEEL	A-14
MK-T	1812	21 1/2" DIA. STEEL BAR	1	STEEL	A-14
MK-U	1813	22 1/2" DIA. STEEL BAR	1	STEEL	A-14
MK-V	1814	23 1/2" DIA. STEEL BAR	1	STEEL	A-14



REFERENCE DRAWINGS: 37661 COKE SIDE BACKSTAYS, 37682 RISER SIDE BACKSTAYS, 37693 OVEN DECK SLABS, 37695 END BACKSTAYS (NOT DETAIL) 370767

NOTE: ALL MARKS TO HAVE PREFIX. 37208, UNLESS OTHERWISE NOTED.

WILPUITE COKE OVEN DIVISION  
 Allied Chemical & Dye Corporation  
 COKE OVENS AND COAL CHEMICALS PLANTS  
 40 RECTOR STREET, NEW YORK 6, N. Y.

INTERLAK IRON CORP.  
 BATTERY SO. CHICAGO, ILL. 1955  
 MAY 11 1955  
 50 OVENS  
 36 0 - C  
 208

# OVEN TIE RODS & SPRINGS 37208