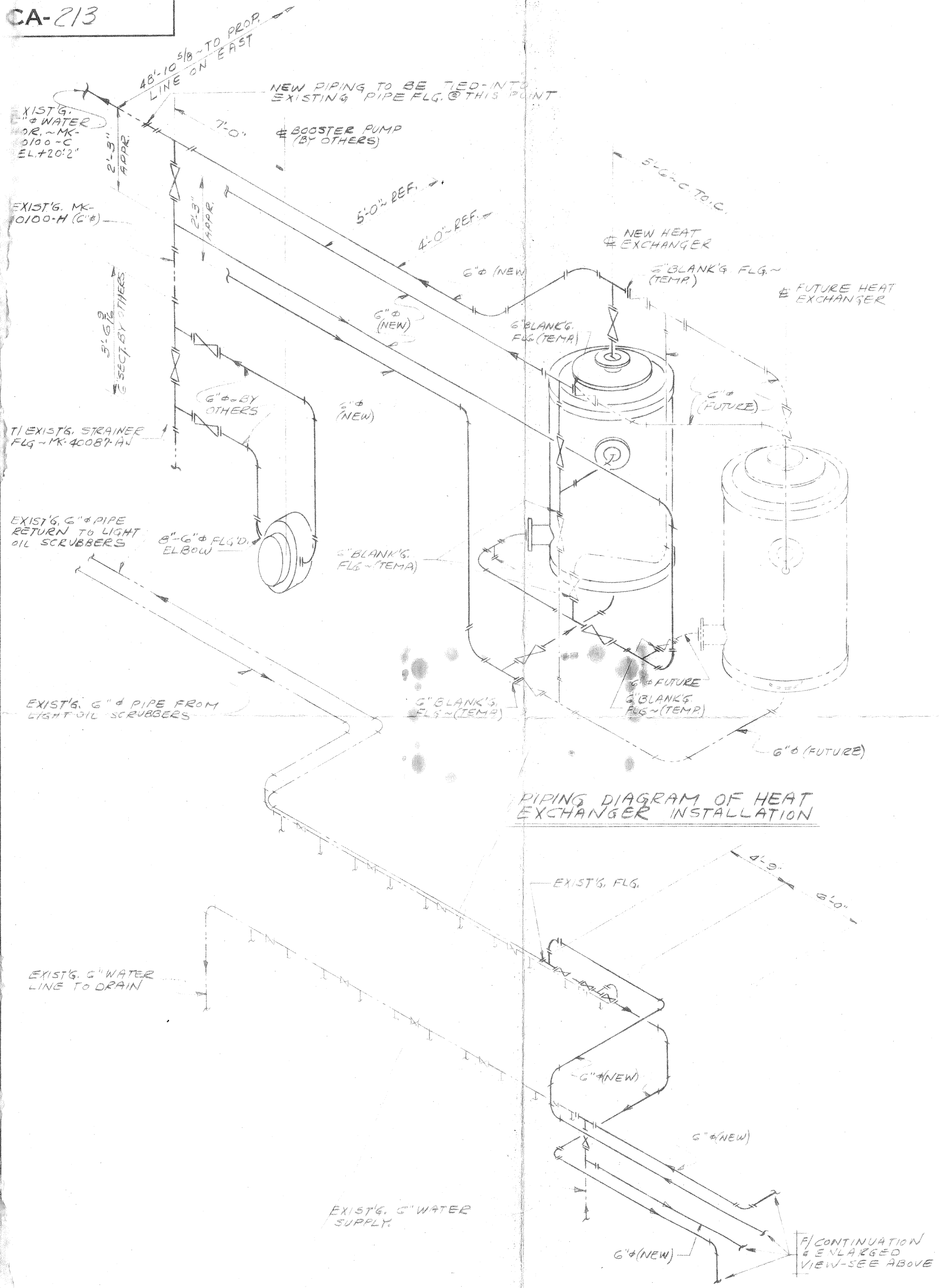


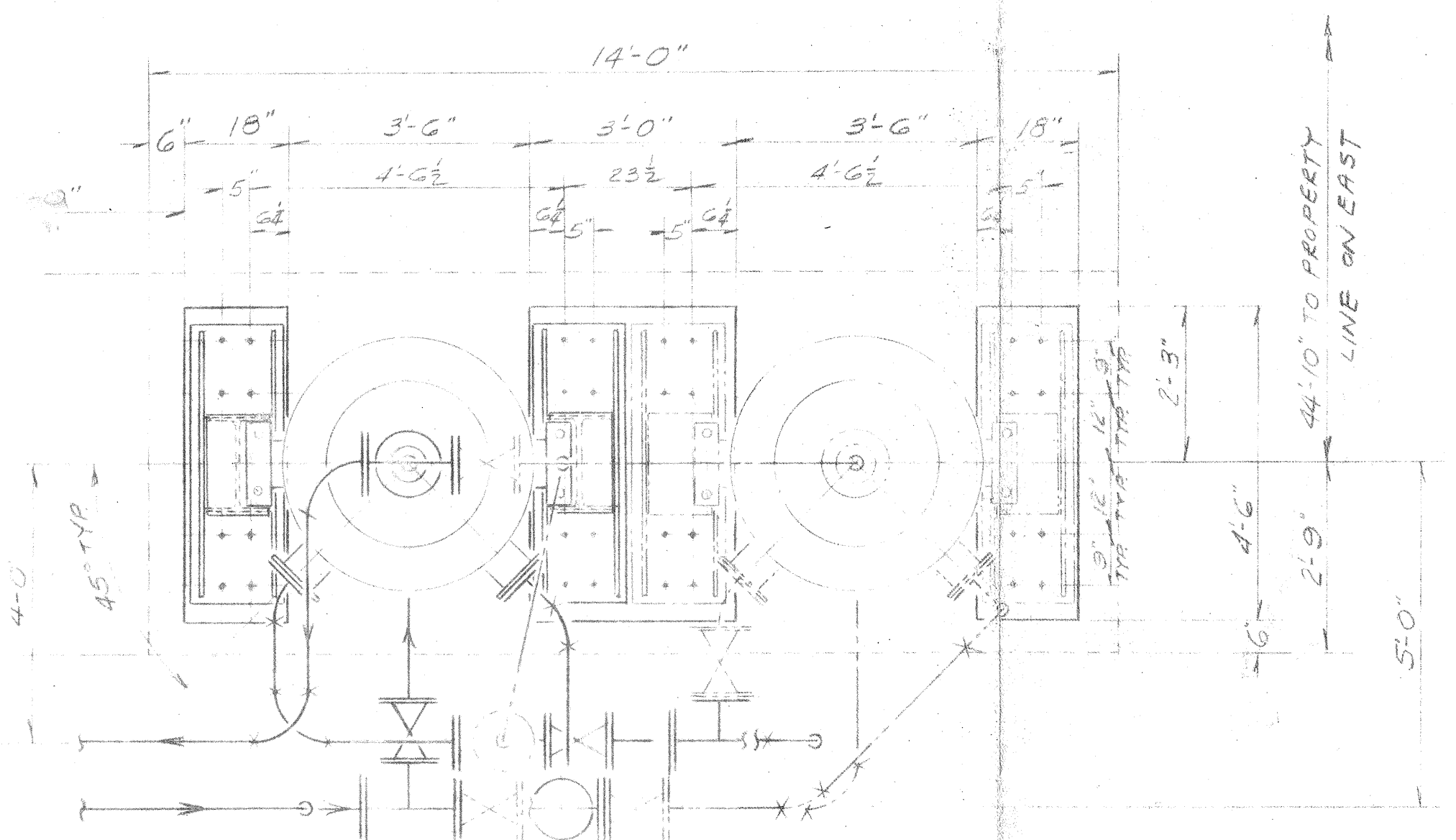
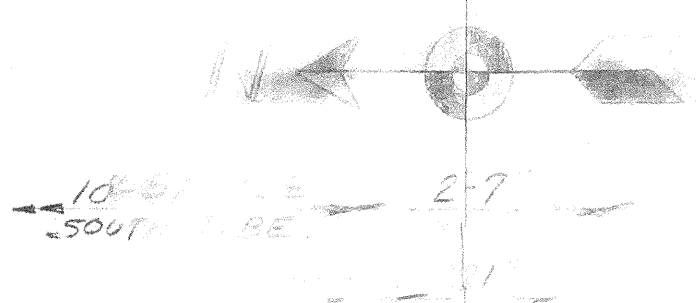
SECT  
A-K  
B-B  
C-C  
D-D  
E-E  
F-F  
G-G  
H-H  
J-J  
K-K  
L-L  
M-M

K'S A-C-D-E-F-G-H-J-K-L-M-N-P-R-S-T-U-W-X-Y-Z

CA-213



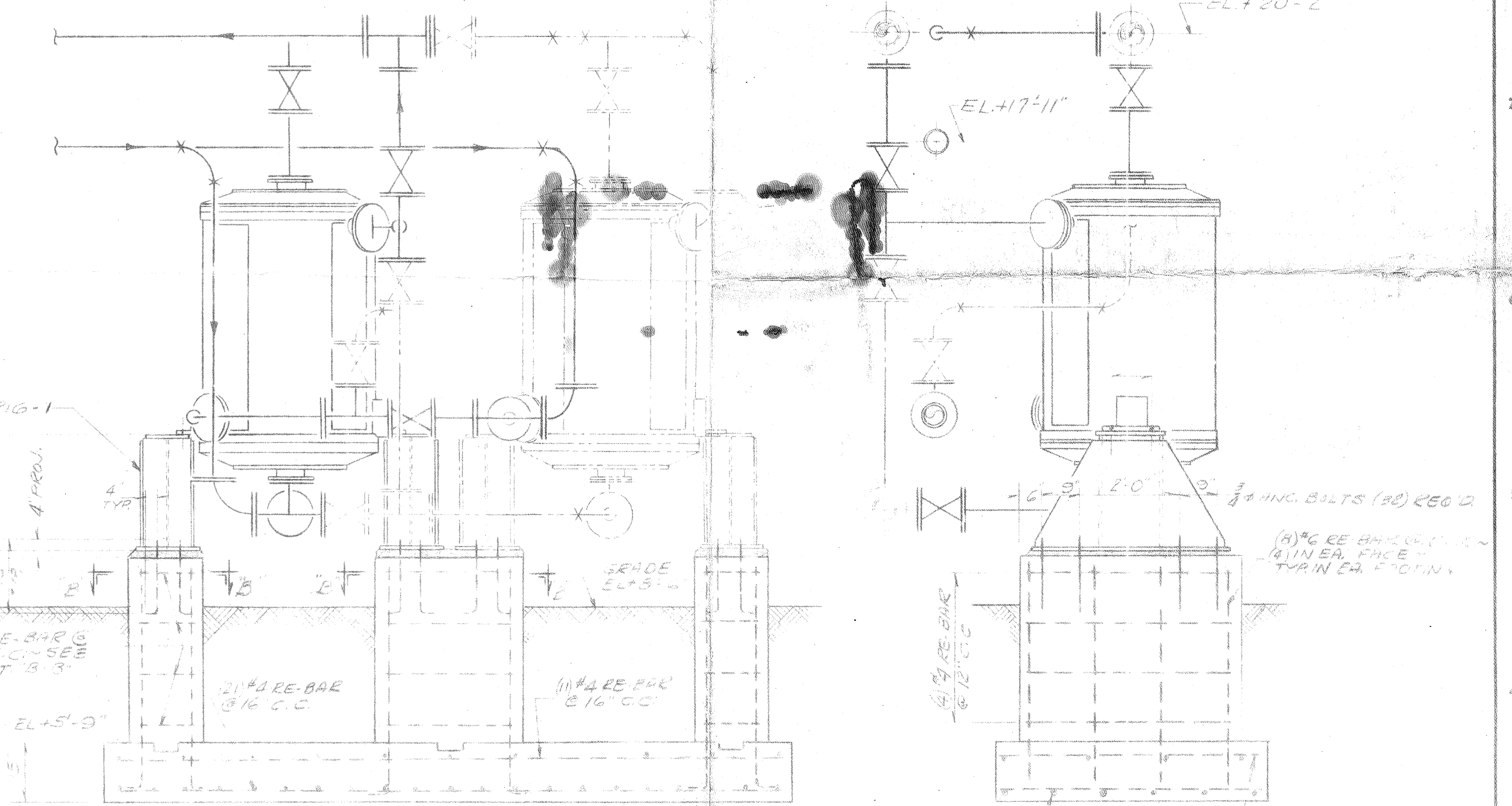
PIPING DIAGRAM TYING INTO EXISTING WASH OIL COOLERS



PLAN VIEW  
SCALE - 1/4" = 1'-0"

BILL OF MATERIAL			
ITEM NO.	NO. REQD	DESCRIPTION	STOCK LEG. NO.

SECTION - B-B  
N.T.S.



EAST ELEVATION  
SCALE - 1/2" = 1'-0"

SECTION - A-A  
SCALE - 1/2" = 1'-0"

CONCRETE SHALL BE WITHIN 20 DAYS. BEVEL ALL CORNERS 1" X 45°. ALL FITTINGS TO BE WELDED UNLESS OTHERWISE NOTED. GAGES TO BE LOCATED @ INLET & OUTLET SIDES OF HEAT EXCHANGER. FLUID GATE VALVES - CRANE #475 1/2" F & D 125# ALL WATER VALVES - CRANE #105 1/2" F & D 125#. TEAM TRACED & INSULATED. BEFORE & AFTER EXCH. SHUT-OFF VALVES - OIL & WATER.

REVISIONS

SPEC COLL & PLT. DETAIL DWG # CA-216	
WILPUTTE - YARD PIPING & WASH OIL COOLER 40008	
WILPUTTE - ARR'GT WASH OIL COOLER PIPING - 40087	
REFERENCE DRAWINGS LISTED ABOVE	
INTERLAKE STEEL CORPORATION CHICAGO, ILLINOIS CHICAGO PLANT - CHICAGO, ILLINOIS	
ER-AREA OF SECTION	PROJECT
COKE PLANT-BY PRODUCTS	COST CENTER
GEN. ARR'GT. OF PROP'D. SPIRAL HEAT EXCHANGERS - LIGHT OIL COOLER AREA	SPEC. NO. 4061

DEPT.	MACHINE NO. & NAME	NEXT ASSEMBLY
DR. BR	CH. 10510	APP.
DATE 2-10-69	DO NOT SCALE WORK TO DIMENSIONS	
SCALE AS NOTED	CA-213	

NOTE: This drawing (or print) is the property of the Interlake Steel Corp. U.S.A. and shall not be traced, reproduced in any manner, nor used for any purpose whatsoever except by written permission of Interlake Steel Corp.