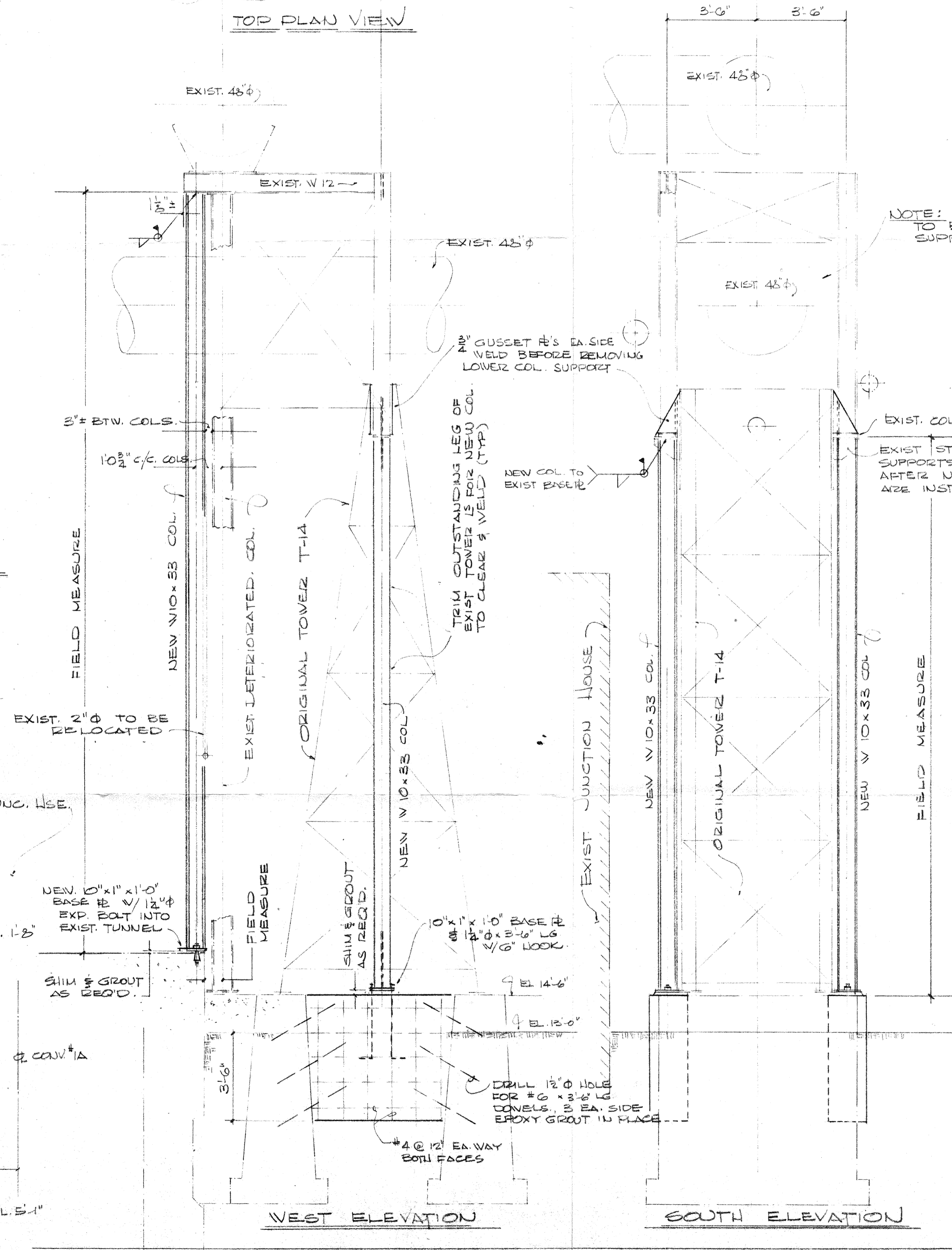
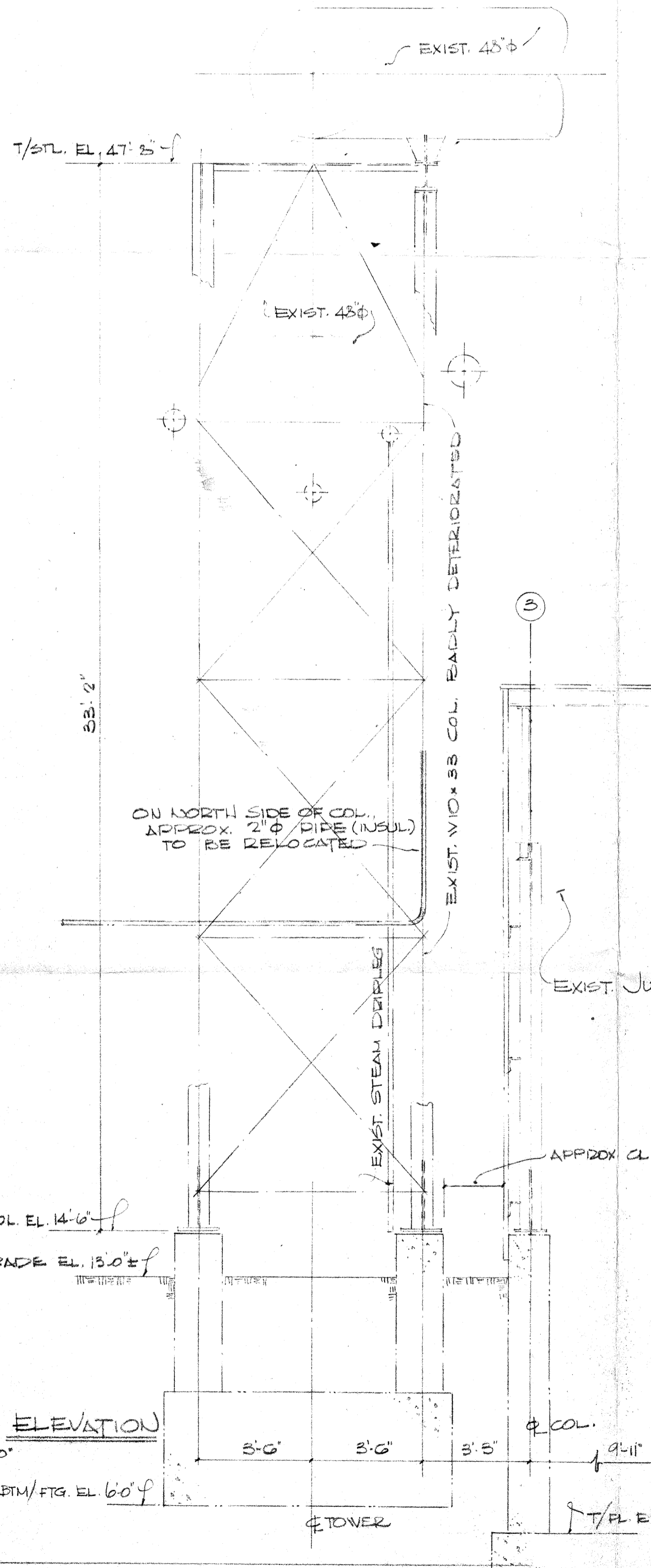
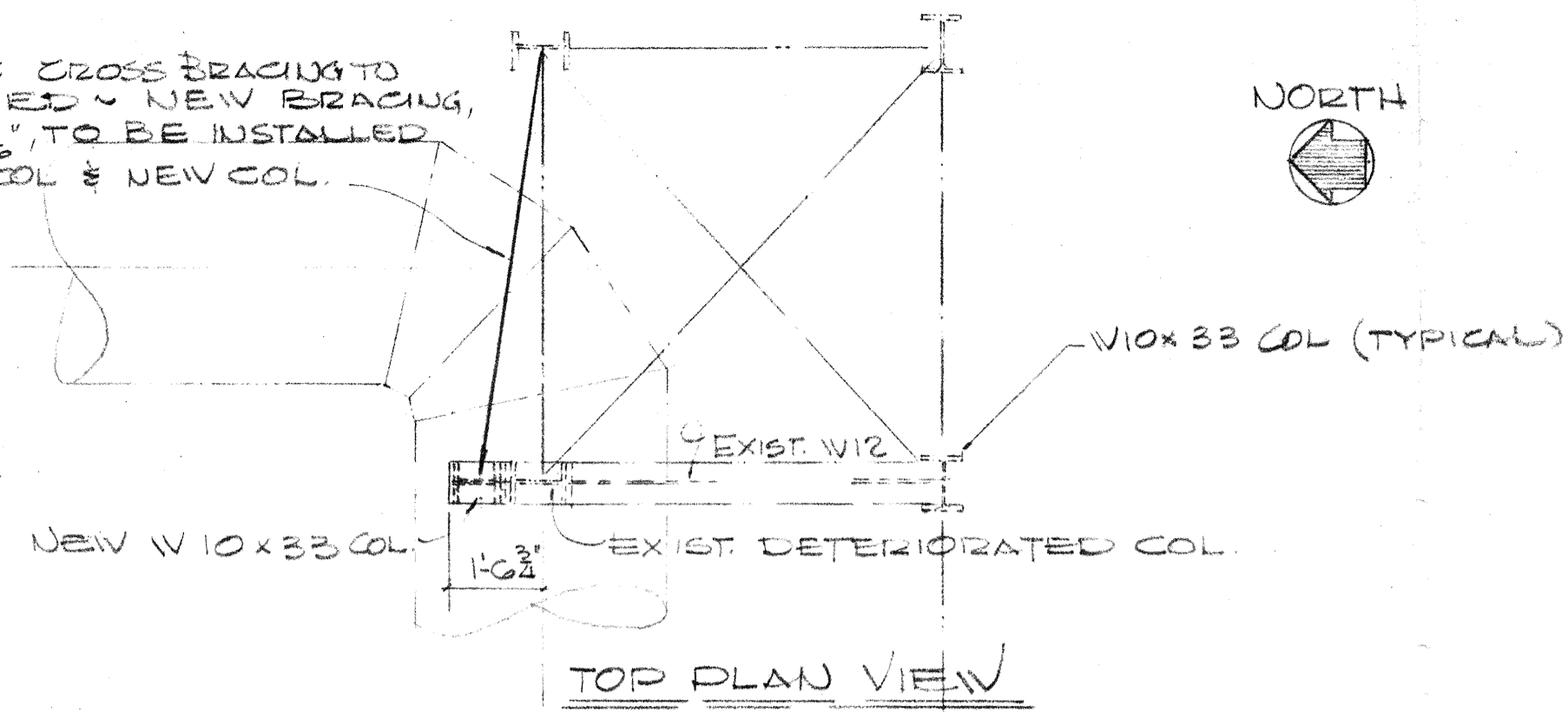
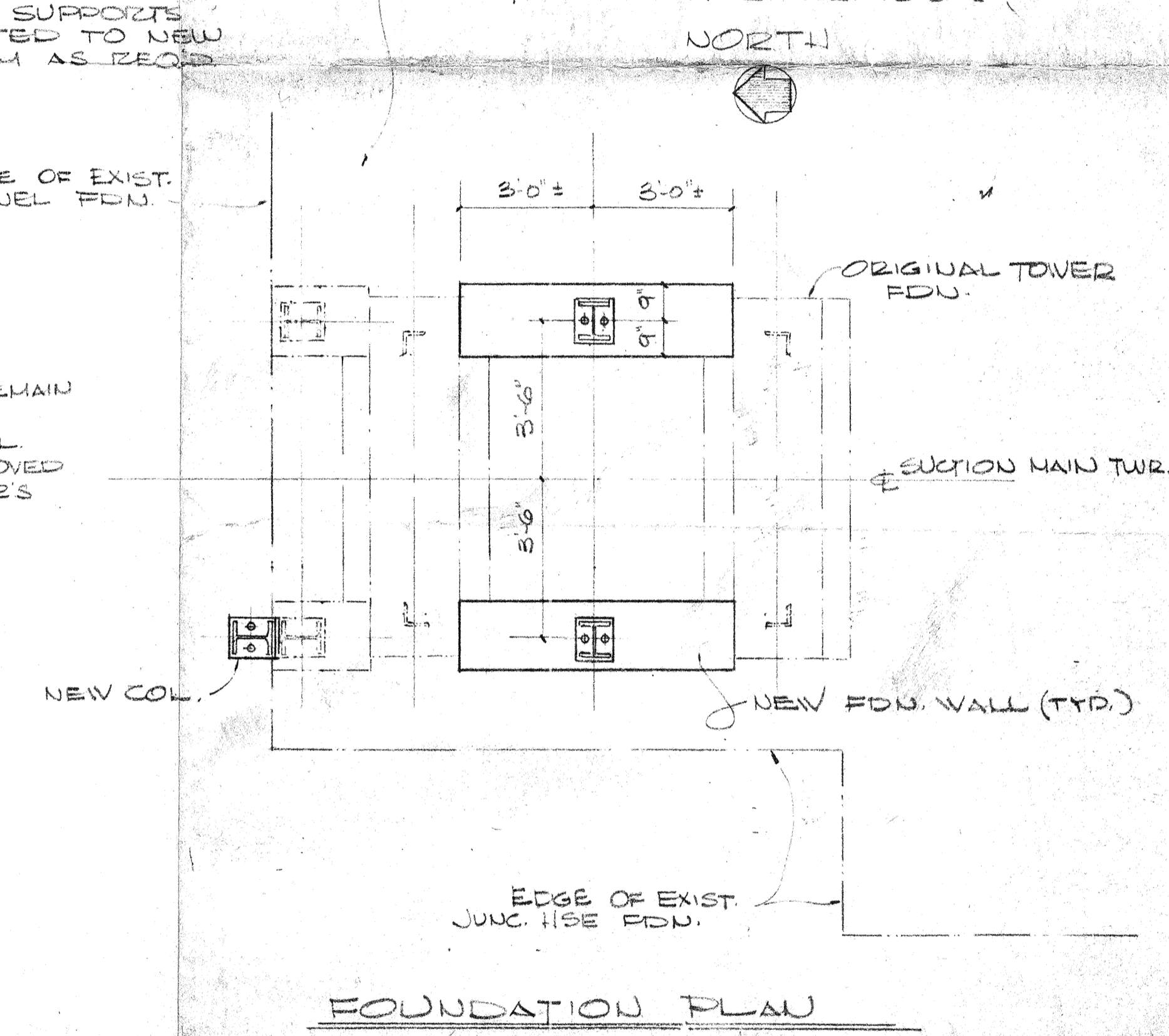


NOTE: EXIST. CROSS BRACING TO BE REMOVED - NEW BRACING, 2L 3x2 1/2 x 1/8 TO BE INSTALLED BTW EXIST. COL. & NEW COL.



NOTE: EXIST. PIPE SUPPORTS TO BE CONNECTED TO NEW SUPPORT SYSTEM AS REQ'D.

NOTE: REMOVE EXCESS SOIL TO RE-STORE AREA TO NORMAL YARD GRADE EL. 13'-0\"/>



CHICAGO CORE PLANT
 OVENS - SUCTION MAIN & SUPPORTS
 PROPOSED REPAIRS
 TO TOWER T-14
 JUN 15, 1983 SK# 061583