

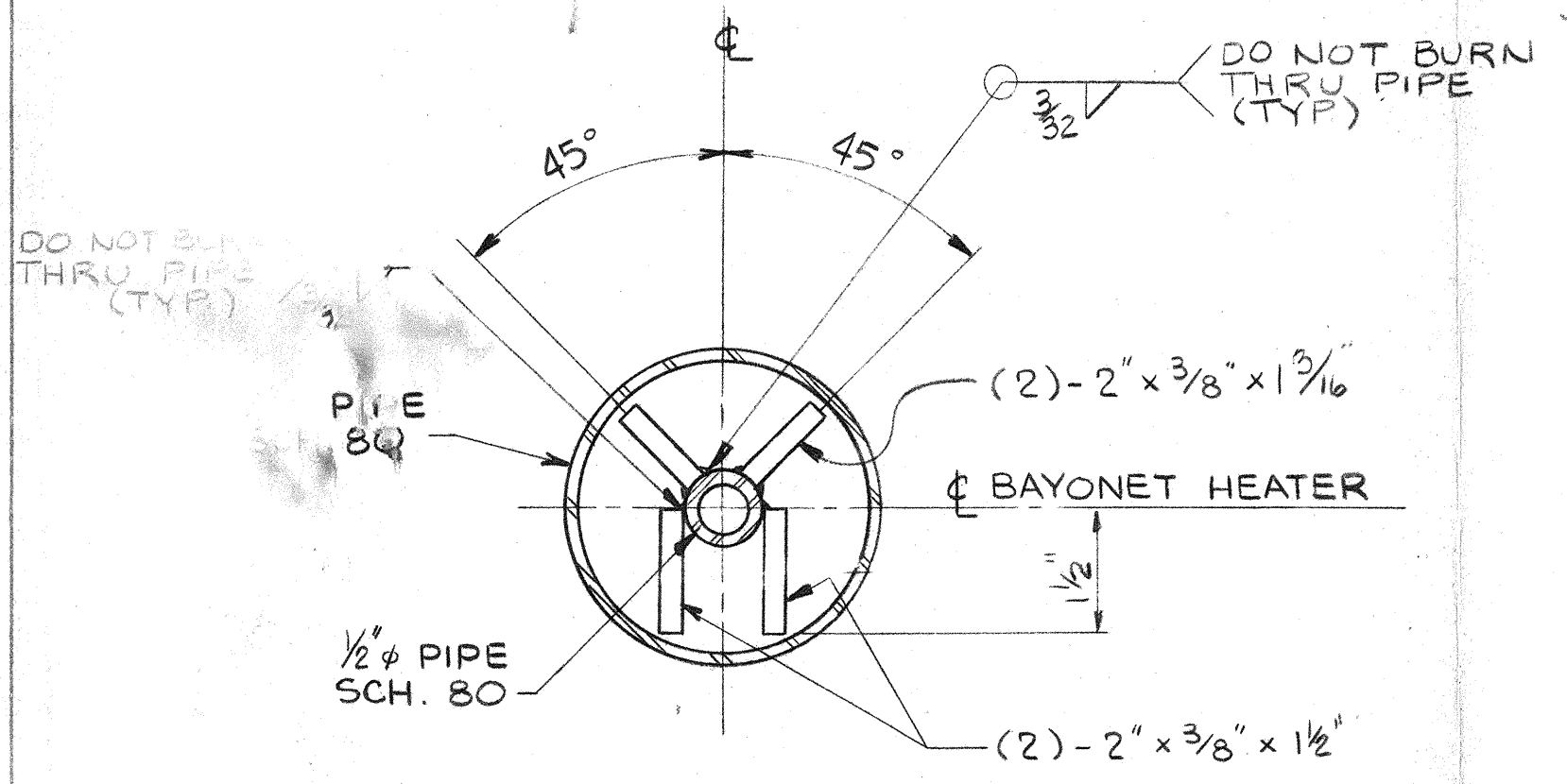
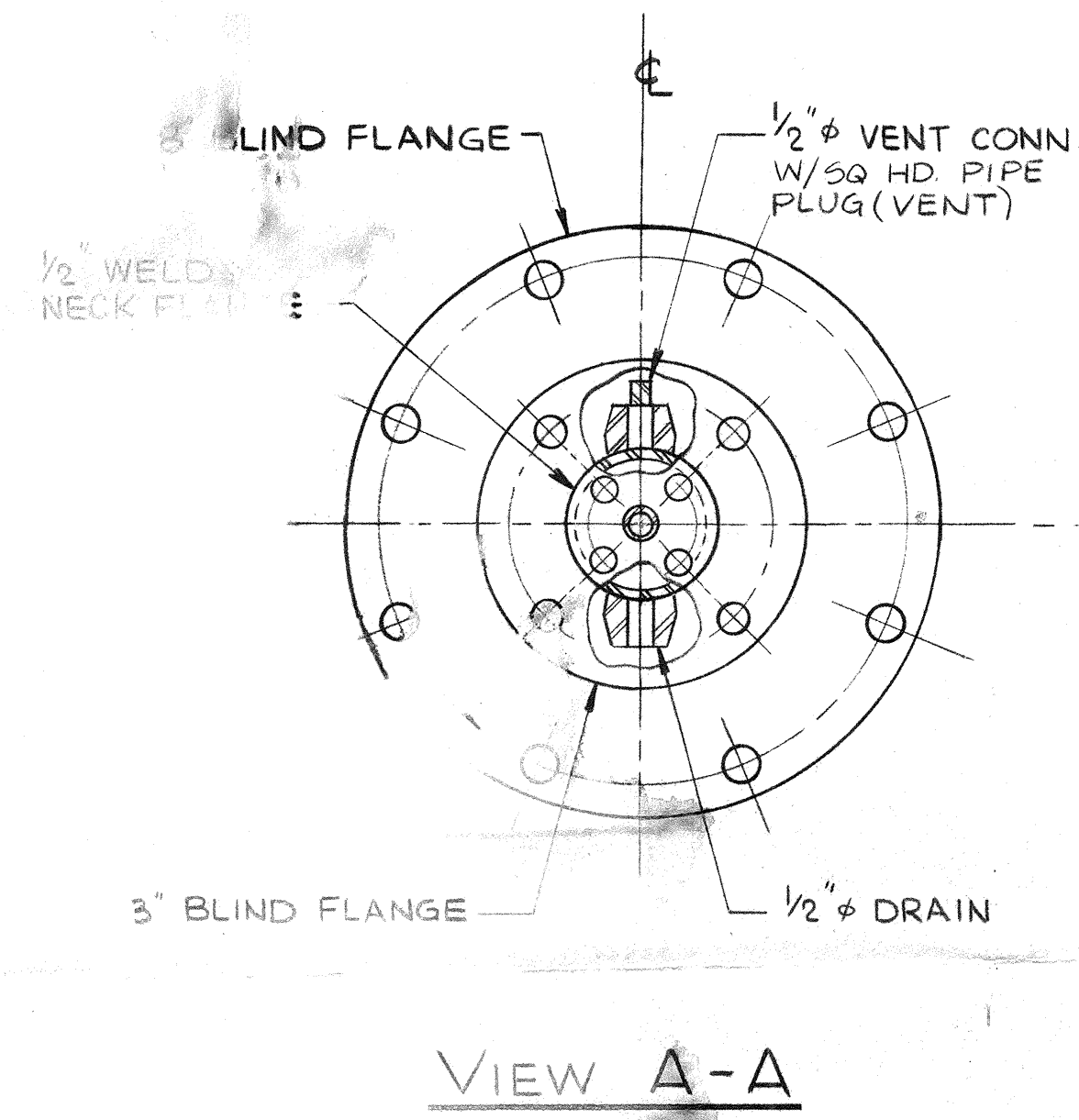
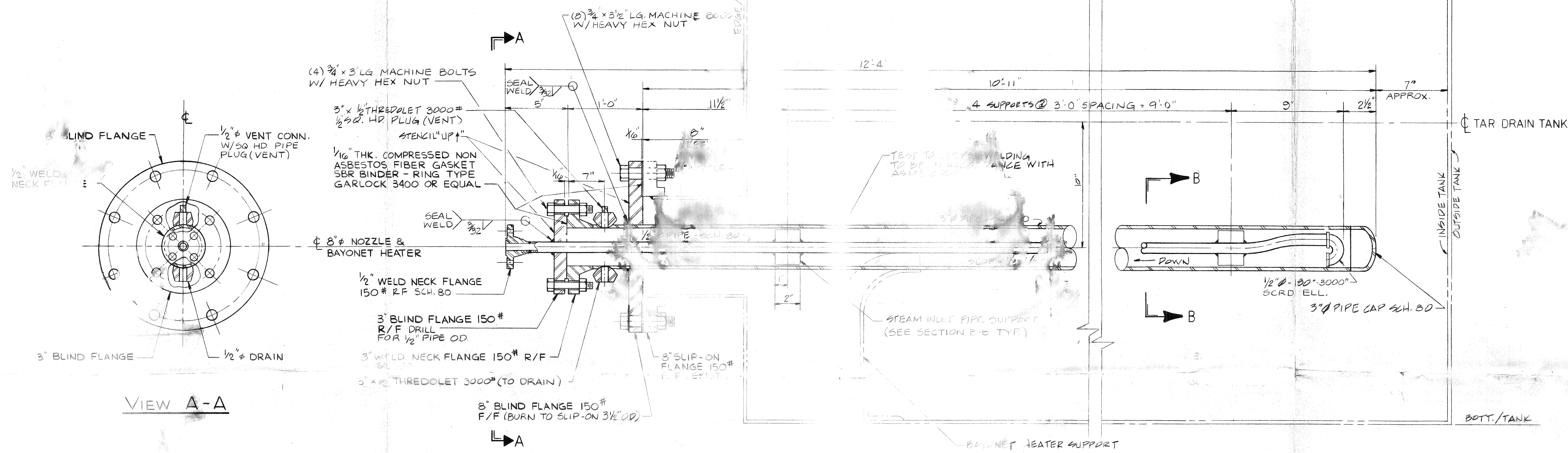
SECTS
A-A
B-B
C-C
D-D
E-E
F-F
G-G
H-H
J-J
K-K
L-L
M-M

MKS A-C D-E F-G H-J K-L M-N P-R S-T U-W X-Y Z

C-7317

BILL OF MATERIAL

ITEM NO.	DESCRIPTION



SECTION B-B
STEAM INLET PIPE SUPPORT
(TYP.)

NOTES:

- DESIGN, FABRICATE AND SHIP PER ACME STEEL CO. SPECIFICATIONS ME001SP, MV001SP, & PPO01SP.
- STEAM PRESSURE 150 PSIG @ 365°F
- TOLERANCES: PIPES, STRAIGHT END TO END (3 PLACES), ± 1/8" OUT OF ROUND
- CARBON STEEL ASTM A53, GRADE B, SEAMLESS OR WELDED PIPE
- HEAT TRANSFER FROM BAYONET HEATER TO TAR AT 150 PSIG (365°F) STEAM AND TAR AT 185°F IS APPROX. 55,000 BTU/HR. (30 BTU/HR/SQFT/°F)
- FLANGE BOLT HOLES TO STRADDLE VERTICAL CENTERLINE AND FLANGE FACES TO BE SMOOTH & TRUE.

REVISIONS

NOTE: This drawing is the property of the Acme Steel Company, U.S.A. and shall not be re-used, copied, or otherwise used for any purpose whatsoever except by written permission of Acme Steel Company.

TOLERANCE EXCEPT AS NOTED
FRAC DIM: 1/16"
DEC DIM: ± .005"
ANGLES: ±

DO NOT SCALE WORK TO DIMENSIONS

DR: D.J.M. CH: 20M 8/27/90
SCALE: 3" = 1'-0" APP.
REV: C-7317

FOR APPROVAL
KEY, INC.

KEY, INC.
AUG 22 1990
ISSUED

C-7321 TAR DRAIN TANK
REFERENCE DRAWINGS LISTED ABOVE

ACME STEEL ACME STEEL COMPANY

COKE PLANT BY-PRODUCTS
BAYONET HEATERS, 3 INCH
DETAILS