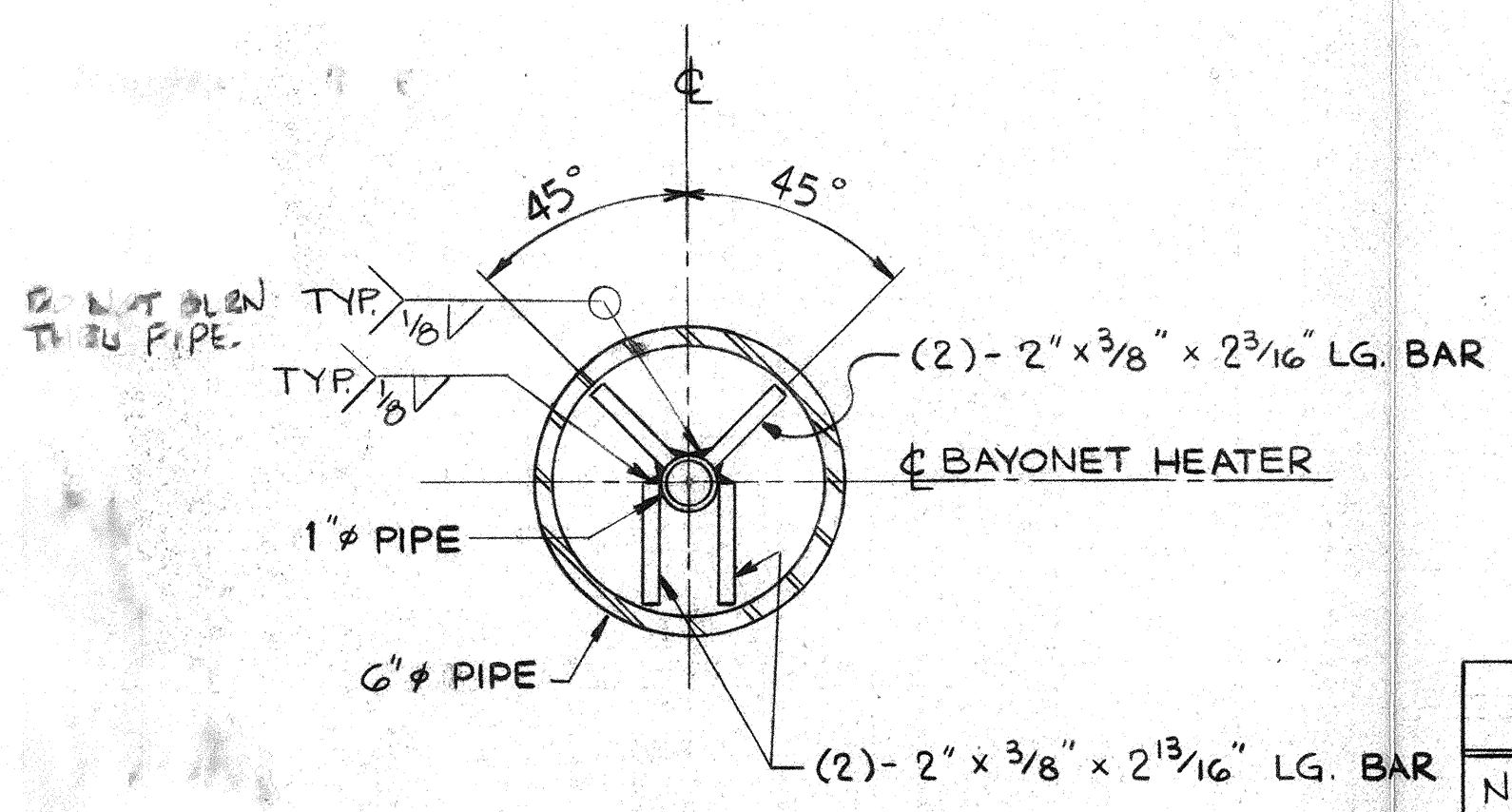
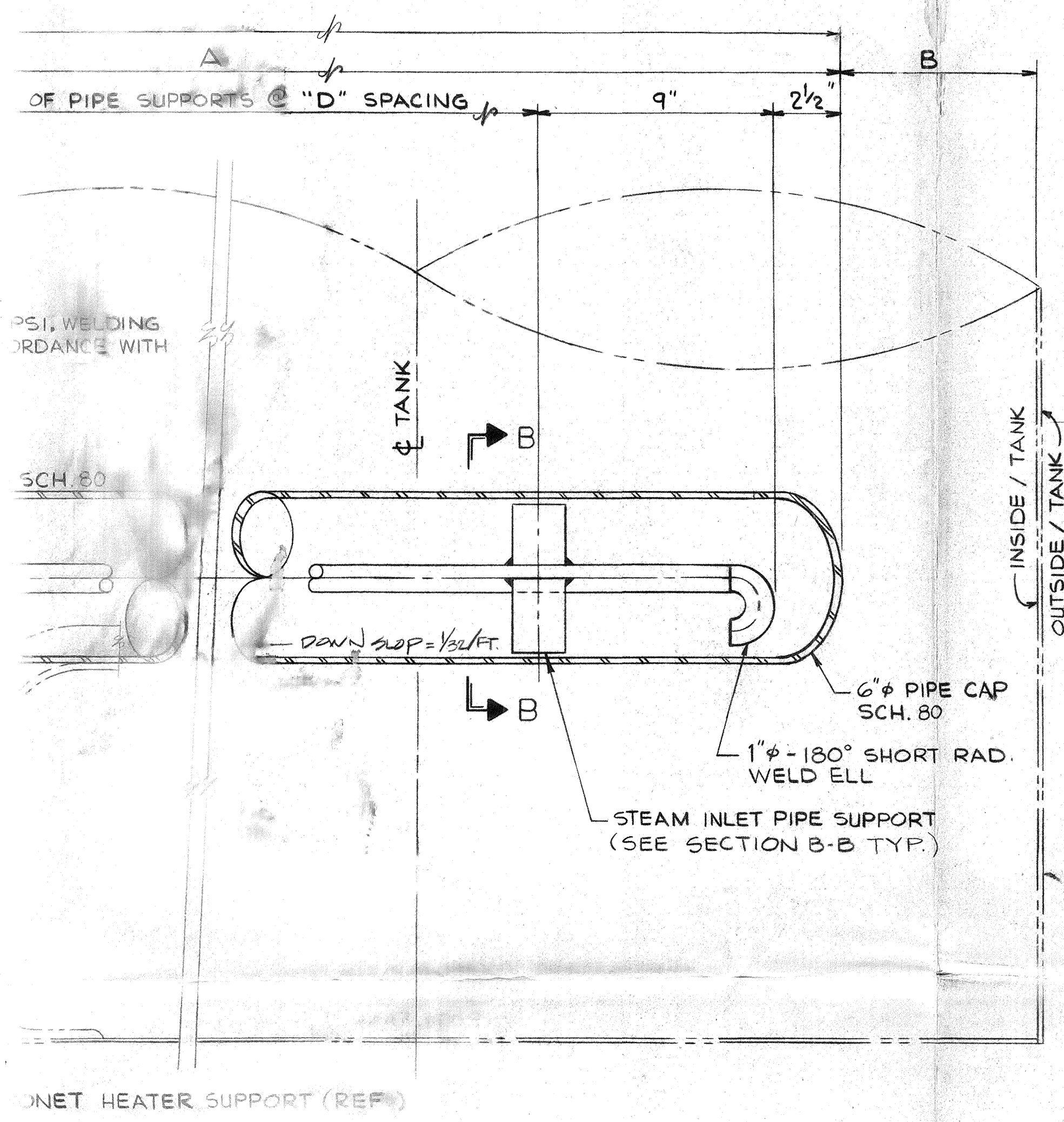


VIEW A-A



SECTION B-B
STEAM INLET PIPE SUPPORT
(TYP.)

NOZZLE	EQUIPMENT LOCATION	QTY.	A	B	C	D	E
NOZZLE H	TAR LOADOUT TANK	2	19'-3"	12"	4	3'-9 5/16"	20'
NOZZLE G	TAR LOADOUT TANK	2	24'-4"	9"	3	3'-7 1/4"	25'
NOZZLE F	TAR STORAGE TANK	4	30'-7"	9"	5	4'-2"	32'
NOZZLE E	TAR STORAGE TANK	4	42'-3"	6"	7	4'-8 3/8"	43'
NOZZLE D	TAR STORAGE TANK	4	48'-7"	6"	8	6'-3"	50'



NOTES:

- DESIGN, FABRICATE AND DELIVER PER ACME STEEL CO. SPECIFICATIONS ME0015, MV0015P, & PFC015P.
- STEAM PRESSURE 150 PSIG @ 365°F
- TOLERANCES: PIPES, STRAIGHT END TO END (3 PLACES) ± 1/8" OUT OF ROUND
- CARBON STEEL ASTM A53, GRADE B, UNLESS OTHERWISE SPECIFIED OR WELDED PIPE.
- FLANGE BOLT HOLES TO STRADDLE PIPE CENTER AND FLANGE FACES TO BE SQUARE TO PIPE.

NOZZLE	HEAT TRANSFER (BTU)*
NOZZLE H	167,000
NOZZLE G	211,000
NOZZLE F	263,000
NOZZLE E	366,000
NOZZLE D	421,000

* APPROX. HEAT TRANSFER PER HEATER AT 150 PSIG (365°F) TO 185°F TAR (TRANSFER RATE IS APPROX. 27 BTU/HR/SQ. FT./°F)
TOTAL FOR ONE TAR STORAGE TANK = 2,100,000 BTU/HR.
TOTAL FOR TAR LOAD-OUT TANK = 756,000 BTU/HR.

FOR APPROVAL KEY, INC.
KEY, INC.
AUG 22 1990
ISSUED

C-7319 TAR LOADOUT TANK
C-7316 TAR STORAGE TANK
REFERENCE DRAWINGS LISTED ABOVE

ACME STEEL ACME STEEL COMPANY

COKE PLANT BY-PRODUCTS
BAYONET HEATERS, 6 INCH
DETAILS