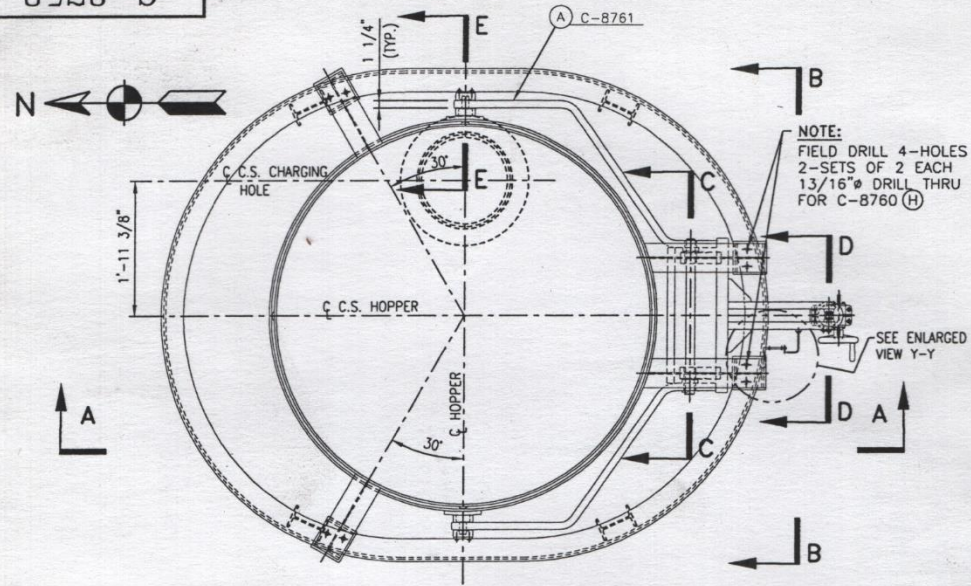
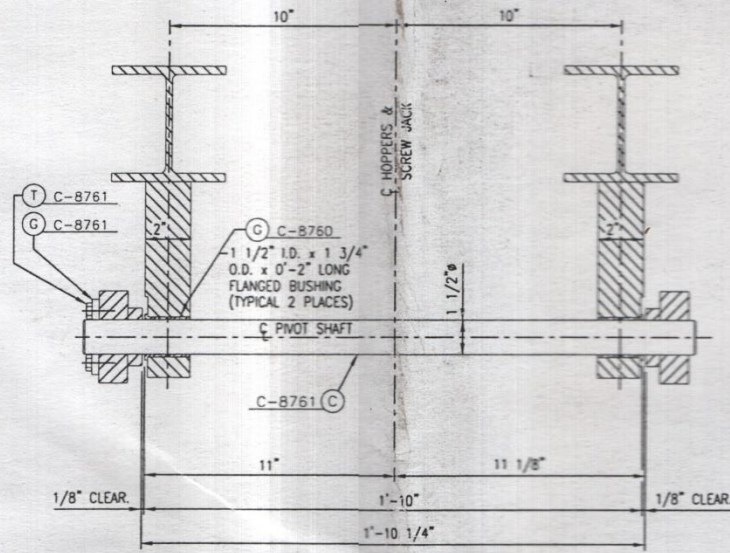


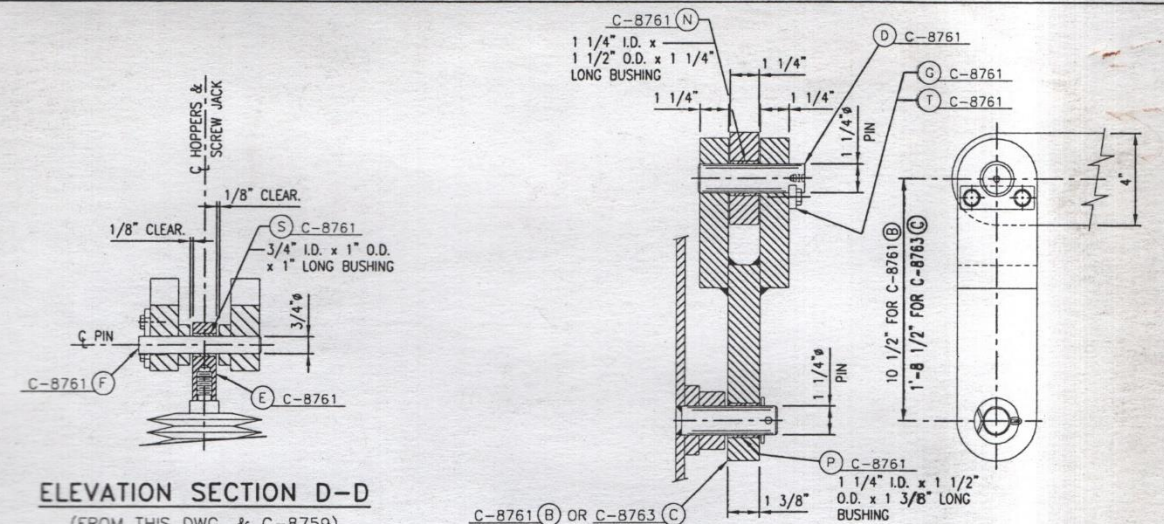
8928-C



PLAN - COKE SIDE HOPPER

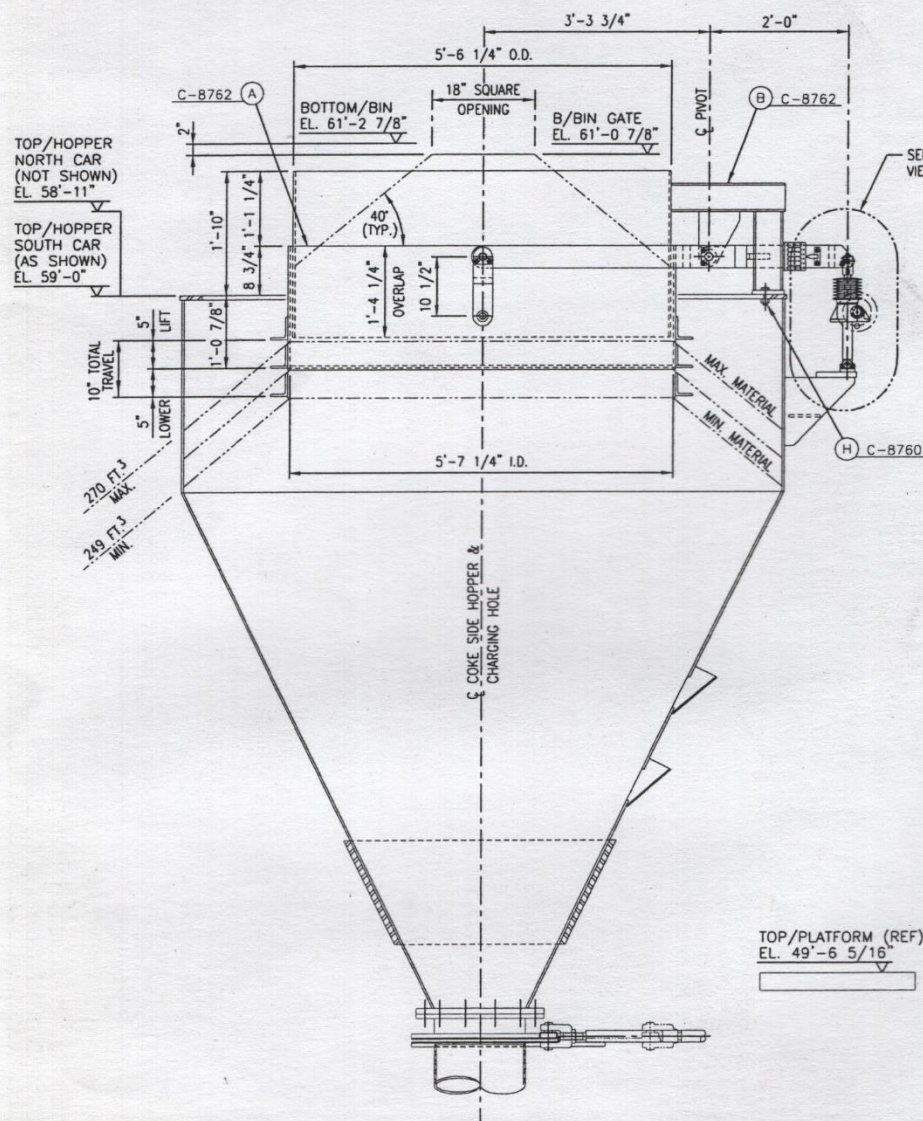


ELEVATION SECTION C-C
(FROM THIS DWG. & C-8759)
SCALE: 3"=1'-0"

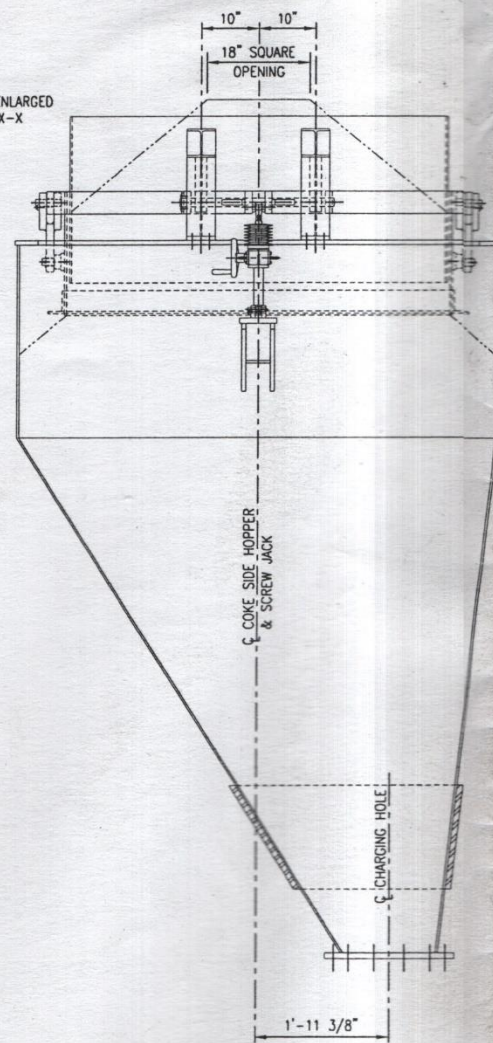


ELEVATION SECTION D-D
(FROM THIS DWG. & C-8759)
SCALE: 3"=1'-0"

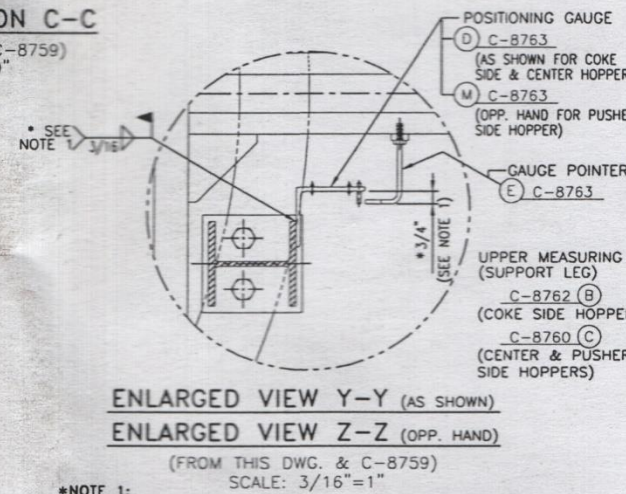
ELEVATION SECTION E-E
SCALE: 3"=1'-0"



ELEVATION VIEW A-A

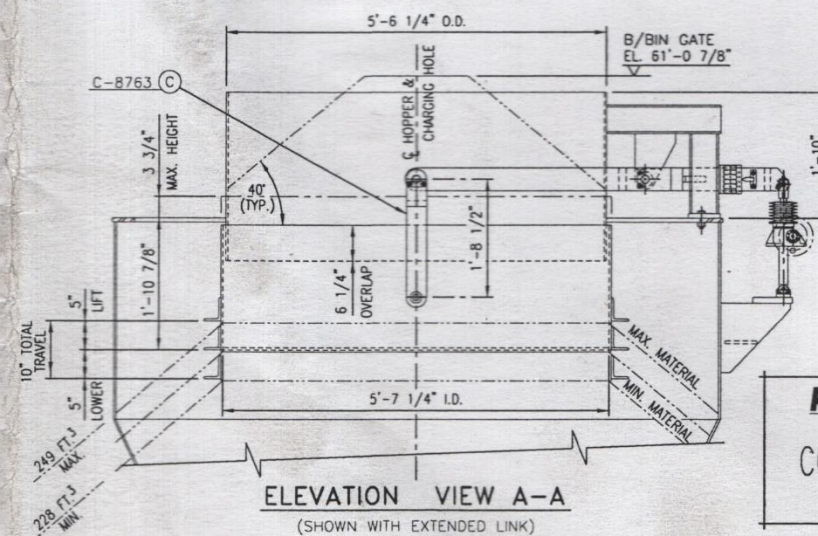


ELEVATION VIEW B-B

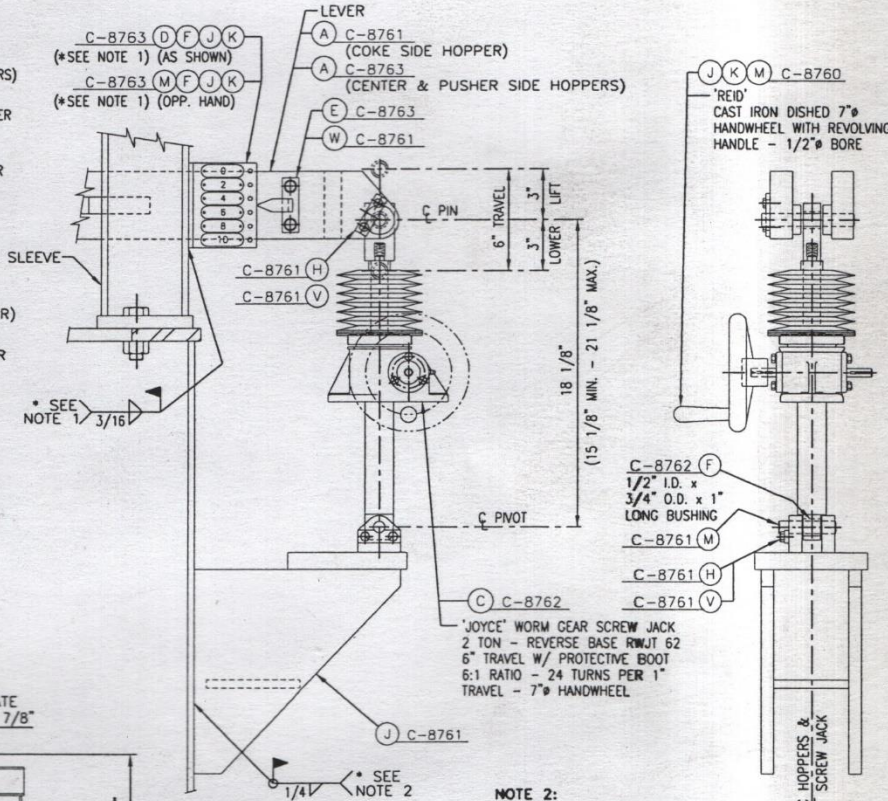


ENLARGED VIEW Y-Y (AS SHOWN)
ENLARGED VIEW Z-Z (OPP. HAND)
(FROM THIS DWG. & C-8759)
SCALE: 3/16"=1"

*NOTE 1:
POSITIONING GAUGE, C-8763 (D) OR (M) TO BE FIELD LOCATED ON UPPER MEASURING SLEEVE SUPPORT LEG, C-8760 (C) OR C-8762 (B) AS SHOWN WITH LEVER, C-8763 (A) OR C-8761 (A) AT ITS HORIZONTAL POSITION (WITH SCREW JACK, C-8762 (C) AT 3\"/>



ELEVATION VIEW A-A
(SHOWN WITH EXTENDED LINK)



ENLARGED VIEW X-X
(FROM THIS DWG. & C-8759)
SCALE: 3/16"=1"

*NOTE 2:
POSITION AND WELD SCREW SUPPORT BRACKET - C-8761 (D) IN PLACE WITH C TO C OF JACK CLEVIS'S @ 18 1/8\"/>

C-7742	NORTH & SOUTH LARRY CARS - G.A. - PLAN
C-7743	NORTH & SOUTH LARRY CARS - BILL OF MAT'L
C-8759	CENTER & P.S. HOPPERS - VOLUME CONTROL - G.A.
C-8760	VOLUME CONTROL - DETAILS
C-8761	VOLUME CONTROL - DETAILS
C-8762	VOLUME CONTROL - DETAILS
C-8763	VOLUME CONTROL - DETAILS
REFERENCE DRAWINGS LISTED ABOVE	

ACME STEEL COMPANY

CHICAGO COKE PLANT
COKE OVENS
NORTH & SOUTH LARRY CARS - C.S. HOPPER
VOLUME CONTROL - GENERAL ARRANGEMENT

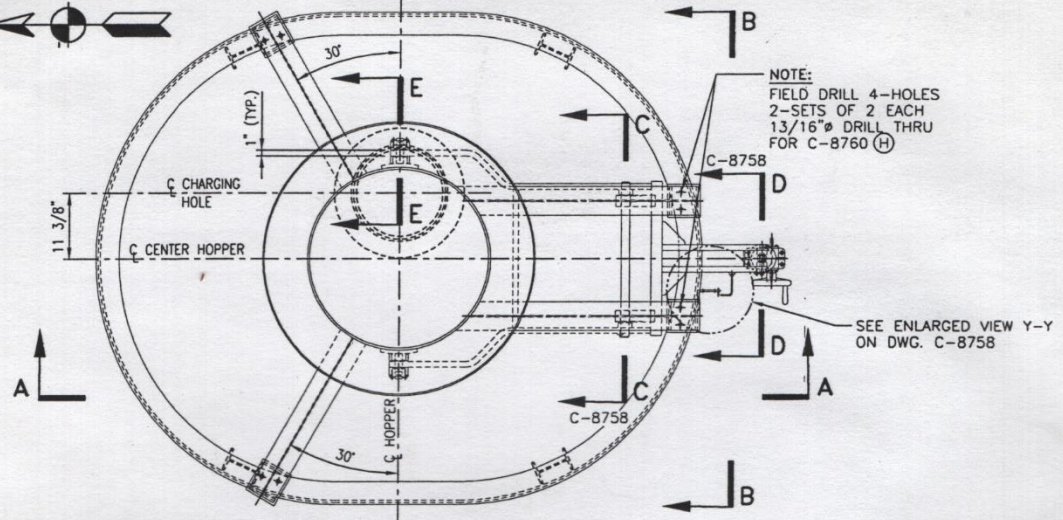
REVISIONS
ISSUED "FOR CONSTRUCTION"
RTP 3/2/01

DRAWN BY:	D. HAYES	01/03/01	JOB No. AA-7032	PLOTTED: 03/02/01
DESIGNED BY:	D. HAYES	01/03/01	FILE SPEC.: C-8758.DWG	
CHECKED BY:	J. SCHEIVE	02/23/01	ENGINEERED BY	
APPROVED BY:			R.T. PATTERSON CO., INC.	
APPROVED BY:			ENGINEERS & CONSULTANTS	
APPROVED BY:			PITTSBURGH PA. * HIGHLAND IN. *	
APPROVED BY:			EVANSVILLE IN. * CLEVELAND OH *	

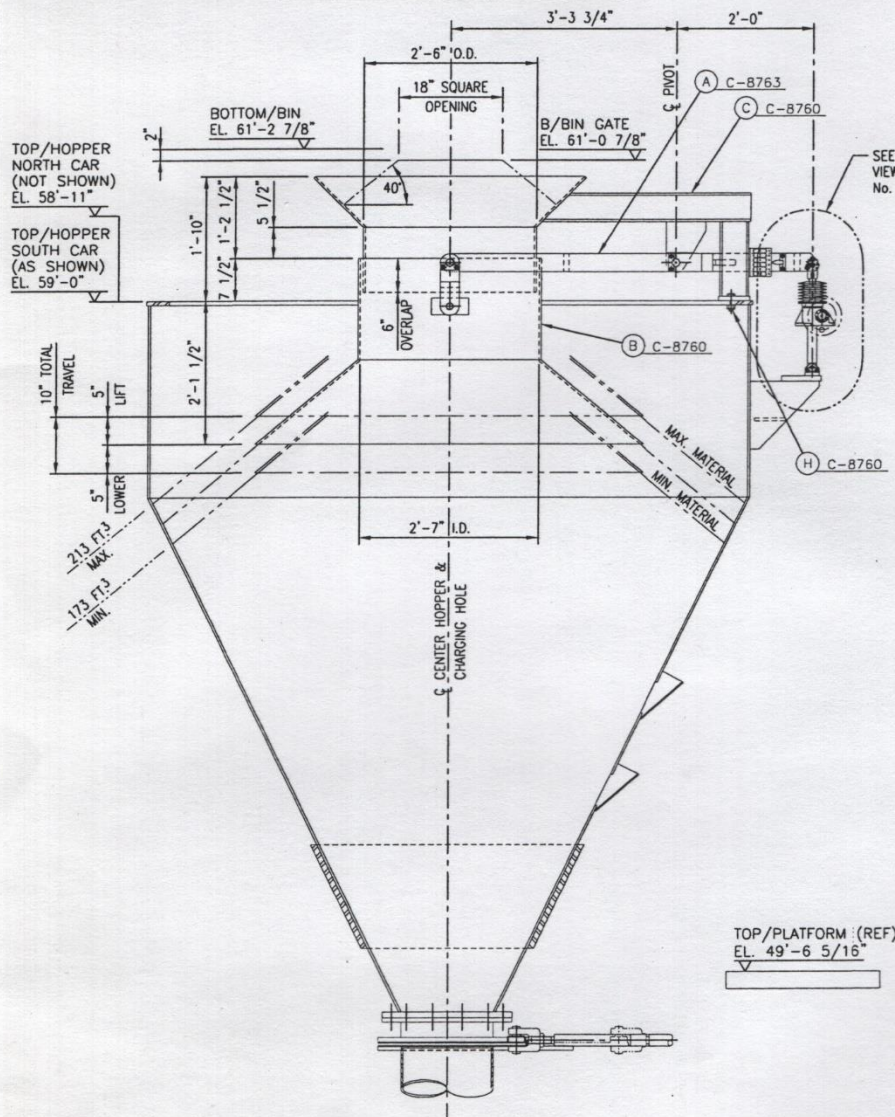
NOTE: This drawing is the property of the Acme Steel Company, U.S.A. and shall not be traced, or reproduced in any manner, nor used for any purpose whatsoever except by written permission of Acme Steel Company.

DO NOT SCALE WORK TO DIMENSIONS

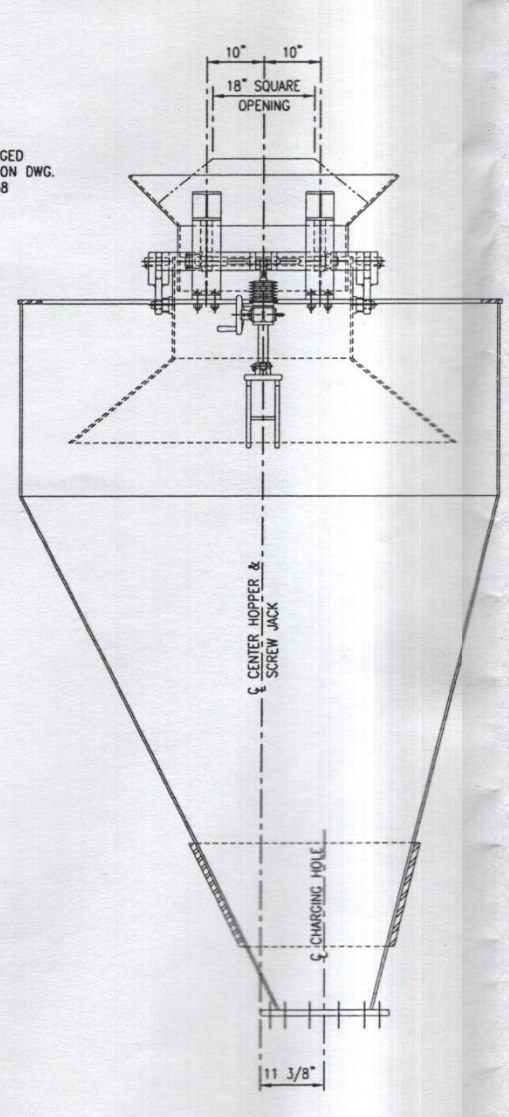
DR.	RTP	CH.	RTP	REV.
SCALE	3/4"=1'-0"	APP.		C-8758 0



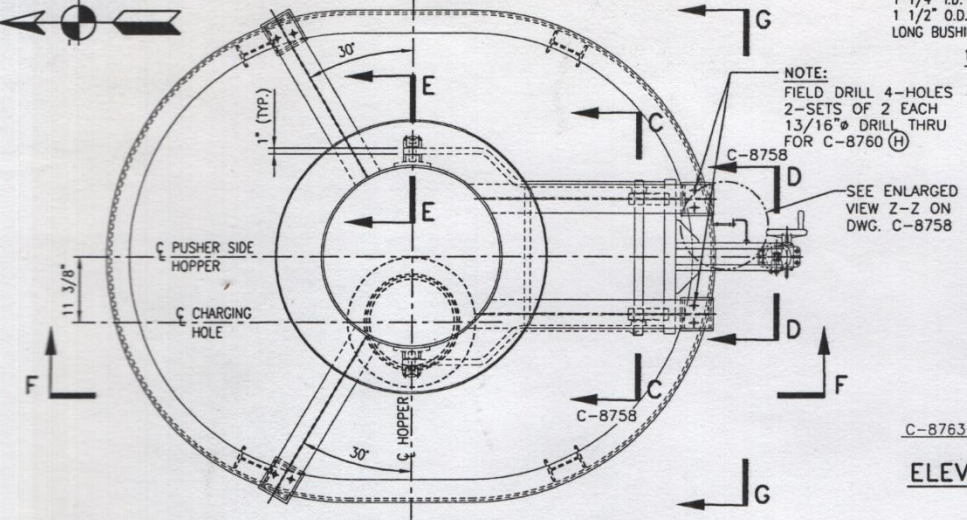
PLAN - CENTER HOPPER



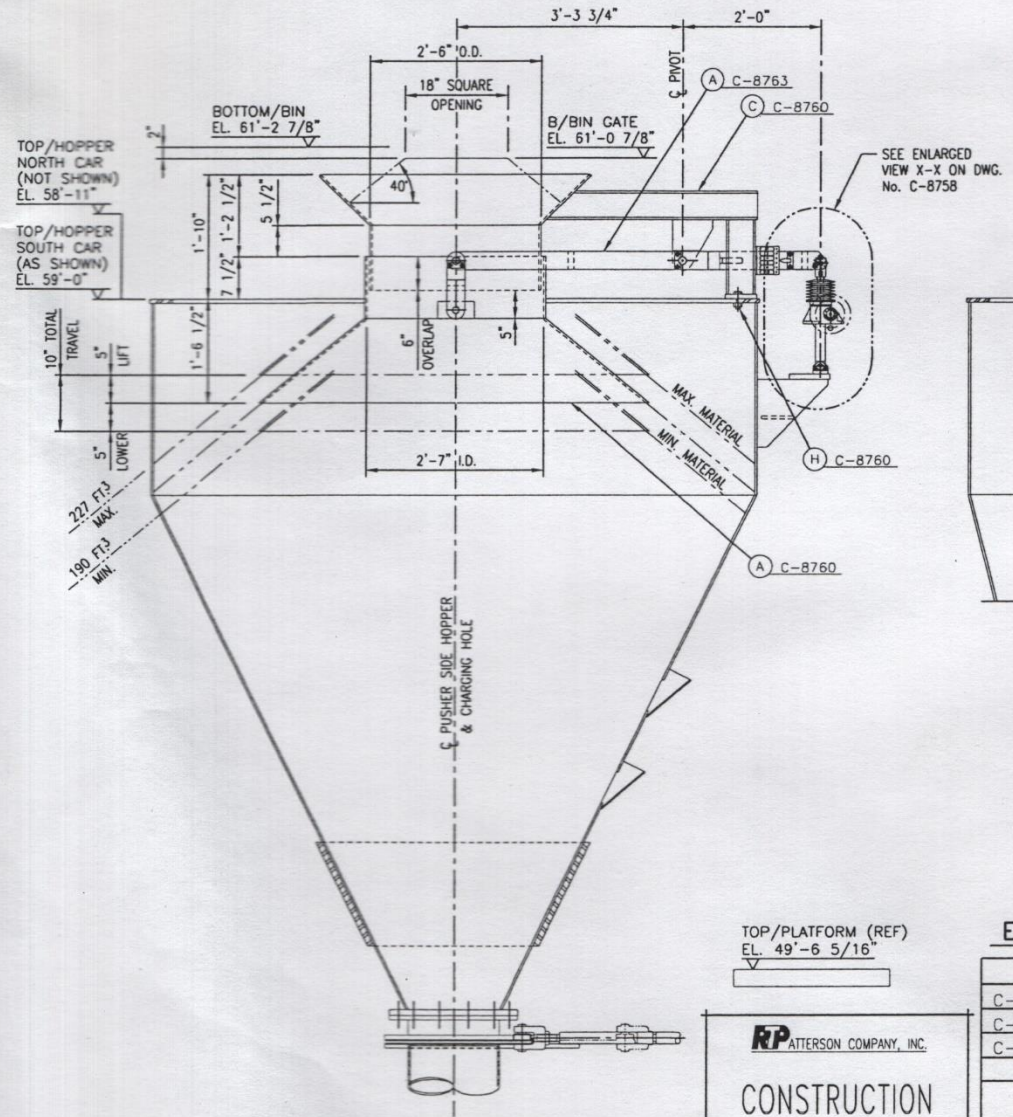
ELEVATION VIEW A-A



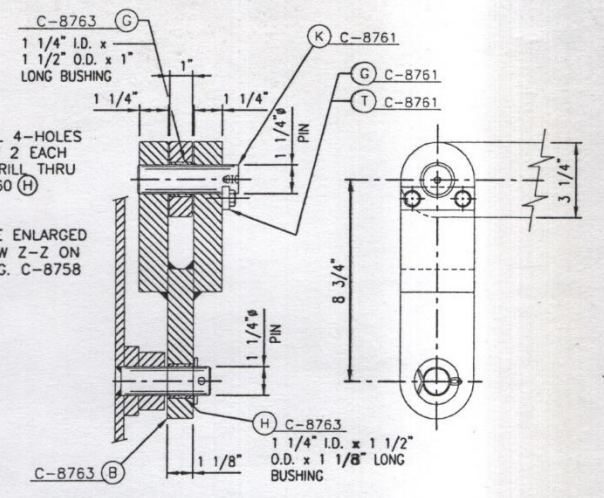
ELEVATION VIEW B-B



PLAN - PUSHER SIDE HOPPER

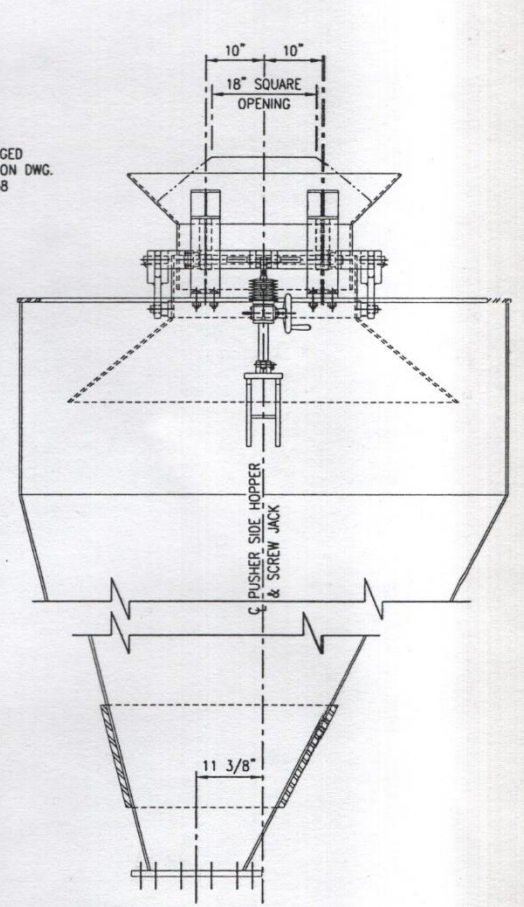


ELEVATION VIEW F-F



ELEVATION SECTION E-E

SCALE: 3"=1'-0"



ELEVATION VIEW G-G

TOP/PLATFORM (REF) EL. 49'-6 5/16"

RP PATTERSON COMPANY, INC.
CONSTRUCTION
3/2/01

C-7442 NORTH & SOUTH LARRY CARS - G.A. - PLAN
C-7443 NORTH & SOUTH LARRY CARS - B/M
C-8758 C.S. HOPPER - VOLUME CONTROL - G.A.
REFERENCE DRAWINGS LISTED ABOVE

ACME STEEL COMPANY

CHICAGO COKE PLANT
COKE OVENS
N. & S. LARRY CARS - CT'R & P.S. HOPPERS
VOLUME CONTROL - GENERAL ARRANGEMENT

DRAWN BY: D. HAYES	01/19/01	JOB No. AA-7032	PLOTTED: 03/02/01
DESIGNED BY: D. HAYES	01/19/01	FILE SPEC.: C-8759.DWG	
CHECKED BY: J. SCHEWE	02/23/01	ENGINEERED BY:	
APPROVED BY:		R.T. PATTERSON CO., INC.	
APPROVED BY:		ENGINEERS & CONSULTANTS	
APPROVED BY:		PITTSBURGH PA. ★ HIGHLAND IN. ★	
		EVANSVILLE IN. ★ CLEVELAND OH. ★	

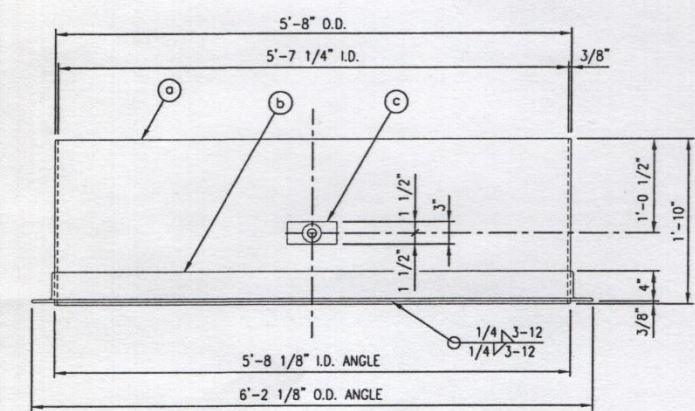
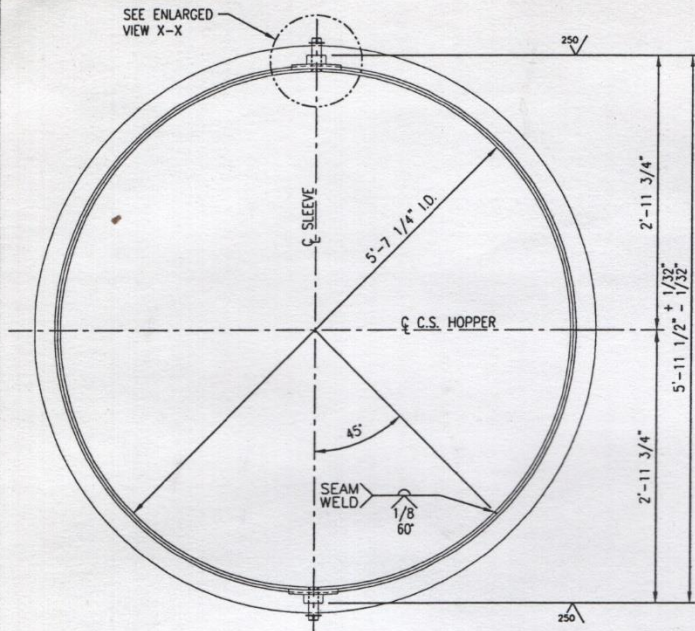
NOTE: This drawing is the property of the Acme Steel Company, U.S.A. and shall not be traced, or reproduced in any manner, nor used for any purpose whatsoever except by written permission of Acme Steel Company.

DO NOT SCALE WORK TO DIMENSIONS

DR.	RTP	CH.	RTP	REV.
SCALE	3/4"=1'-0"	APP.		C-8759 0

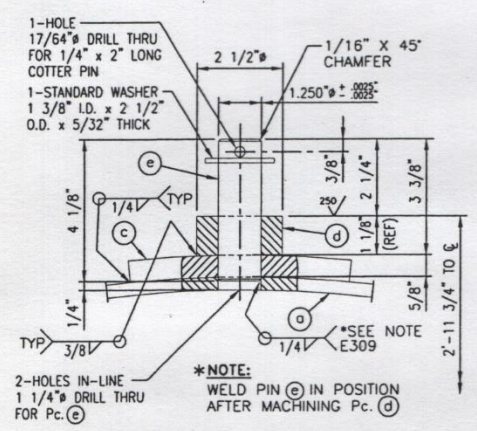
REVISIONS
ISSUED "FOR CONSTRUCTION"
RTP 3/2/01

C-8762

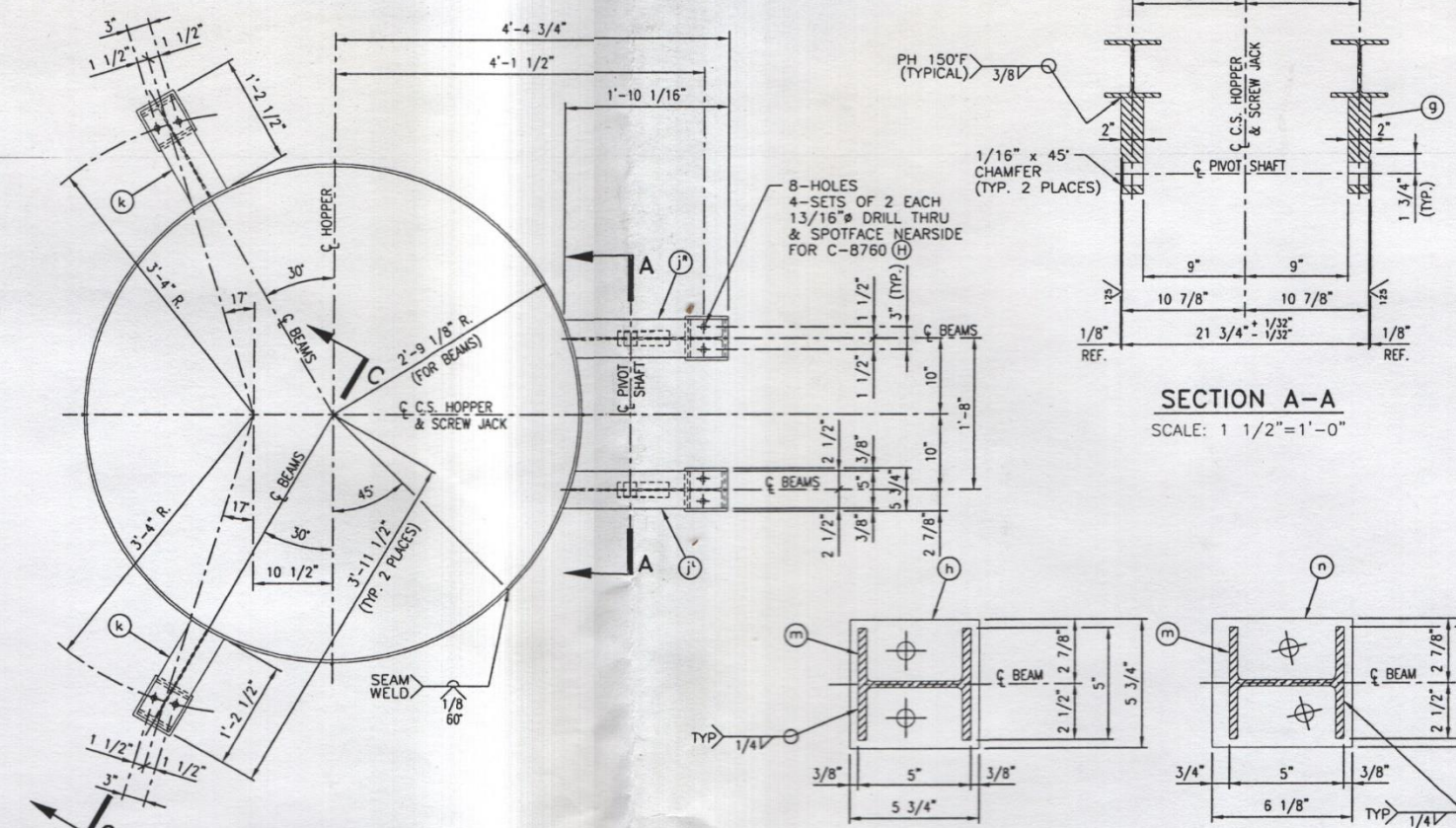


***NOTE:**
SHOP BALANCE SLEEVE SO THAT IT IS PLUMB AND CONCENTRIC WITH UPPER MEASURING SLEEVE.

(A) LOWER MEASURING SLEEVE



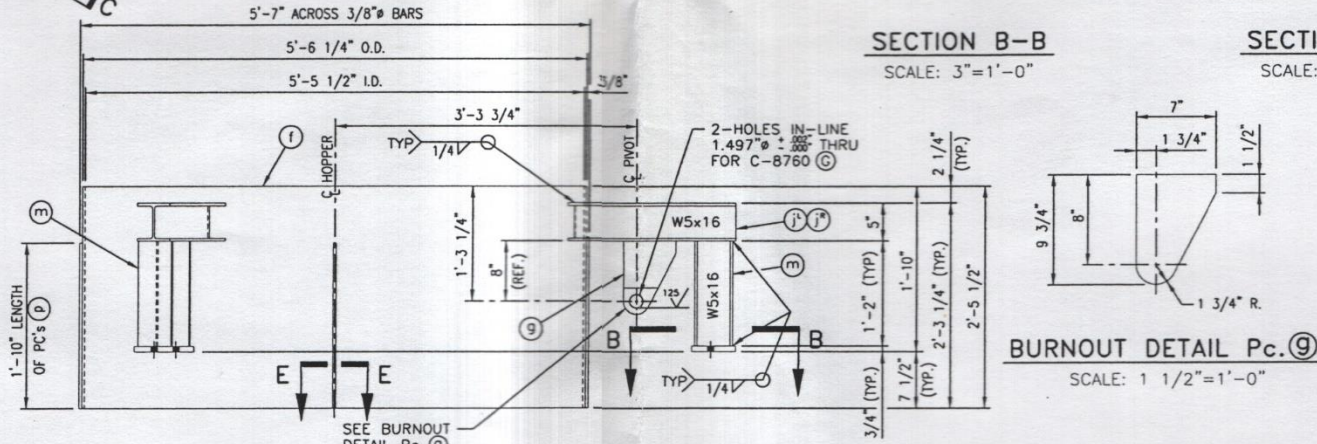
ENLARGED VIEW X-X
SCALE: 3/8"=1"



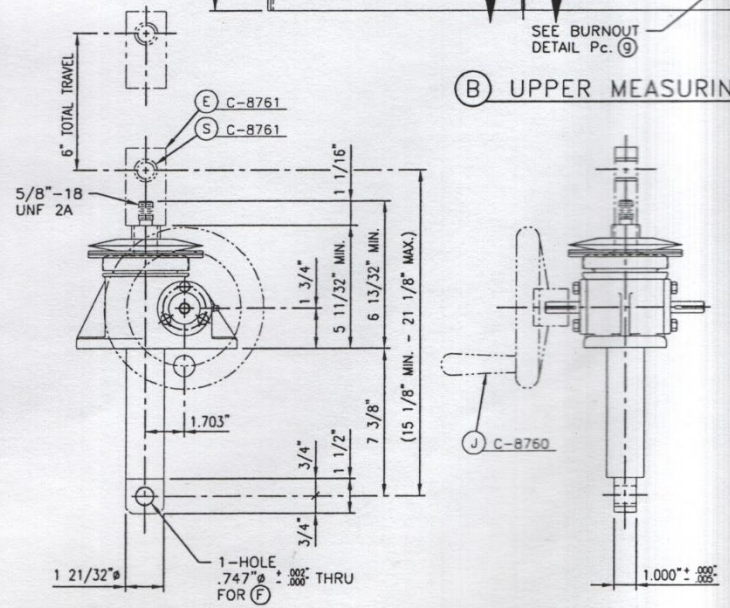
SECTION A-A
SCALE: 1 1/2"=1'-0"

SECTION B-B
SCALE: 3"=1'-0"

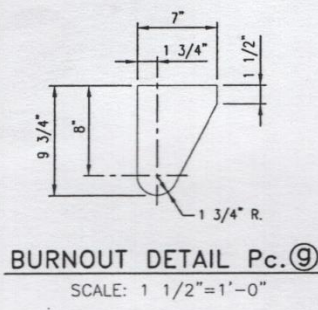
SECTION D-D
SCALE: 3"=1'-0"



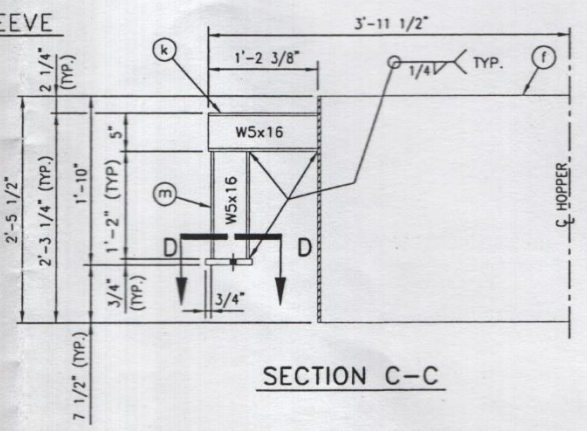
(B) UPPER MEASURING SLEEVE



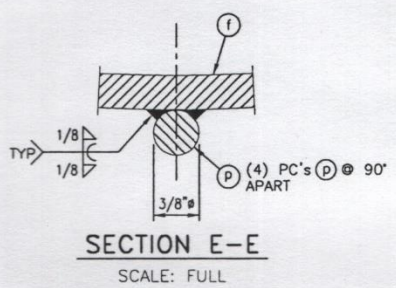
(C) MACHINE SCREW JACK
SCALE: 3"=1'-0"



BURNOUT DETAIL Pc. 9
SCALE: 1 1/2"=1'-0"



SECTION C-C



SECTION E-E
SCALE: FULL

SHOP NOTES:

- 1) ALL WORKMANSHIP TO CONFORM TO THE LATEST A.I.S.C. & ACME'S SPECIFICATIONS.
- 2) ALL WELDING TO BE DONE IN ACCORDANCE WITH THE LATEST A.W.S. CODE SPECIFICATIONS USING E70XX ELECTRODES.
- 3) REMOVE ALL SHARP EDGES & BURRS, PRIOR TO PAINTING.
- 4) PAINT PER ACME'S LATEST PAINT SPECIFICATIONS.

BILL OF MATERIAL				WEIGHTS AND REMARKS
MARK	QTY	DESCRIPTION	MAT'L	
A	1	LOWER MEASURING SLEEVE (C.S. HOPPER)		
		TO CONSIST OF:		
a	1	PL 3/8" x 22" x 17'-8 7/16" LG.	A36 STL	BEND TO SUIT
b	1	4" x 3" x 3/8" x 18'-2 5/8" LG.	A36 STL	BEND TO SUIT
c	2	BAR 5/8" x 3" x 0'-6 1/2" LG.	A36 STL	BEND TO SUIT
d	2	BAR 2 1/2" x 0'-1 3/8" LG.	A36 STL	FIN. ALLOWED
e	2	BAR 1 1/4" x 0'-4 1/8" LG.	A36 STL	
B	1	UPPER MEASURING SLEEVE (C.S. HOPPER)		
		TO CONSIST OF:		
f	1	PL 3/8" x 29 1/2" x 17'-2 15/16" LG.	A36 STL	BEND TO SUIT
g	2	PL 2" x 7" x 0'-9 3/4" LG.	A36 STL	BURN TO SUIT
h	2	PL 3/4" x 5 3/4" x 0'-5 3/4" LG.	A36 STL	
i	1	W5 x 16# x 1'-10 1/16" LG.	A36 STL	BURN TO SUIT
j	1	W5 x 16# x 1'-10 1/16" LG.	A36 STL	BURN TO SUIT
k	2	W5 x 16# x 1'-2" LG.	A36 STL	BURN TO SUIT
m	4	W5 x 16# x 1'-2" LG.	A36 STL	
n	2	PL 3/4" x 5 3/4" x 0'-6 1/8" LG.	A36 STL	
p	4	BAR 3/8" x 1'-10" LG.	A36 STL	
C	3	'JOYCE' MACHINE SCREW JACK - 2 TON, 6:1 RATIO, REVERSED BASE, UPRIGHT, TRANSLATING WORM GEAR SCREW JACK, W/ DOUBLE CLEVIS ARRANGEMENT - TYPE 3 THREADED ON TOP & 3 TON STYLE TYPE 4 CLEVIS W/ .747" HOLE ON BOTTOM, W/ 6" RISE W/ HIGH TEMPERATURE FIBERGLAS ALUMINUM PROTECTIVE BOOT & HIGH/LOW TEMP GREASE - MODEL No RWJT62-6"-UP-T3/T4-W/BOOT-DBL CLVS-SPCL COMPLETE W/ STAINLESS STEEL SCREW & WORM & PAINTED W/ STEEL-IT STAINLESS STEEL PAINT		SEE DETAIL
F	3	'BUNTING' CAST BRONZE SLEEVE BRG. W/ GRAPHITE FILLED GROOVING STYLE 10 - .573" I.D. x .750" O.D. x 1" LG.	C93200 CAST BRZ	

NOTE: QUANTITIES LISTED ABOVE ARE FOR ONE (1) LARRY CAR ONLY.



C-8758 C.S. HOPPER - VOLUME CONTROL - G.A.
C-8759 CENTER & P.S. HOPPERS - VOL. CONTROL - G.A.
REFERENCE DRAWINGS LISTED ABOVE

ACME STEEL COMPANY

CHICAGO COKE PLANT
COKE OVENS
NORTH & SOUTH LARRY CARS
VOLUME CONTROL - DETAILS

REV.	DESCRIPTION
0	ISSUED "FOR CONSTRUCTION" RTP 3/2/01

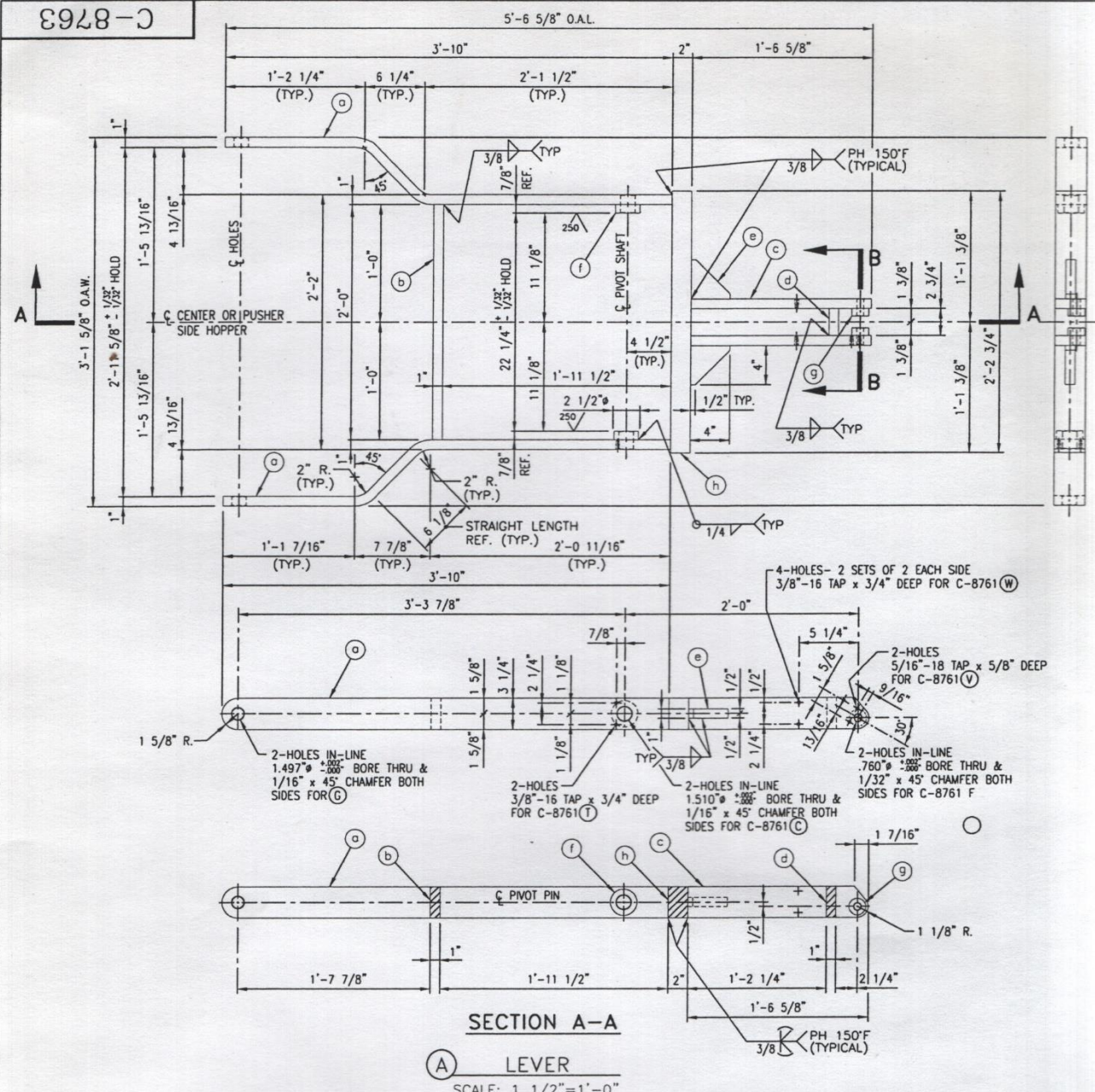
DRAWN BY:	D. HAYES	01/16/01	JOB No. AA-7032	PLOTTED: 03/02/01
DESIGNED BY:	D. HAYES	01/16/01	FILE SPEC: C-8762.DWG	
CHECKED BY:	J. SCHEME	02/23/01	ENGINEERED BY:	R.T. PATTERSON CO., INC.
APPROVED BY:			ENGINEERS & CONSULTANTS	
APPROVED BY:			PITTSBURGH PA. * HIGHLAND IN. *	
APPROVED BY:			EVANSVILLE IN. * CLEVELAND OH. *	

NOTE: This drawing is the property of the Acme Steel Company, U.S.A. and shall not be loaned, or reproduced in any manner, nor used for any purpose whatsoever except by written permission of Acme Steel Company.

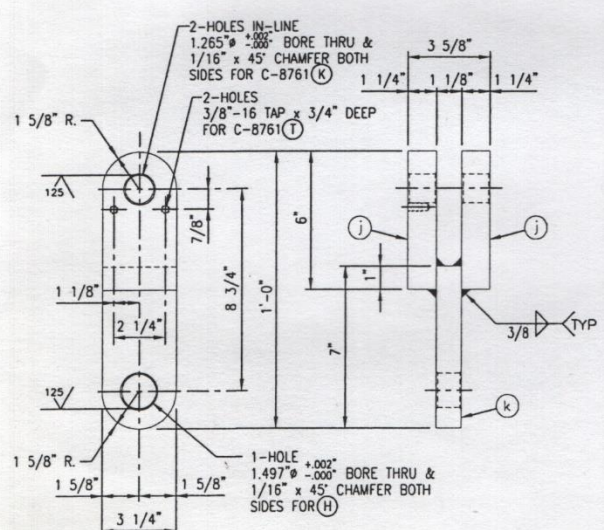
DR.	RTP	CH.	RTP	REV.	0
SCALE	1"=1'-0"	APP.			

C-8762

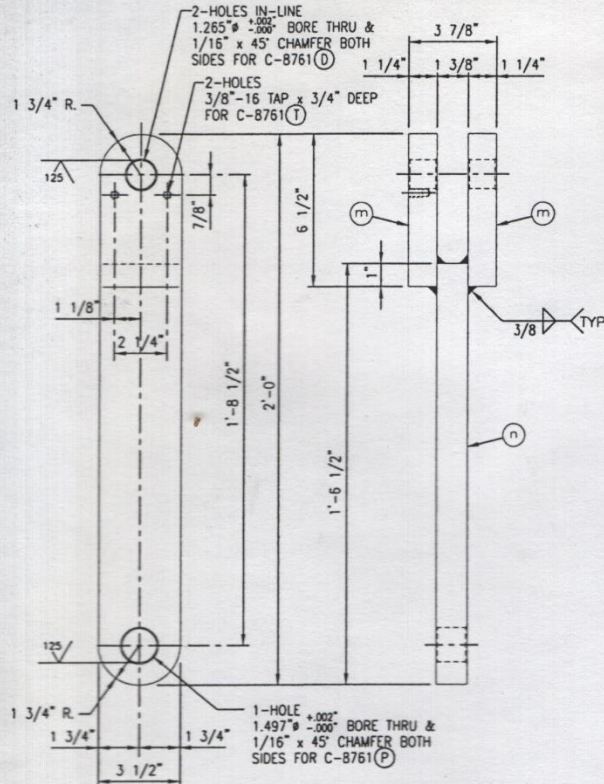
C-8763



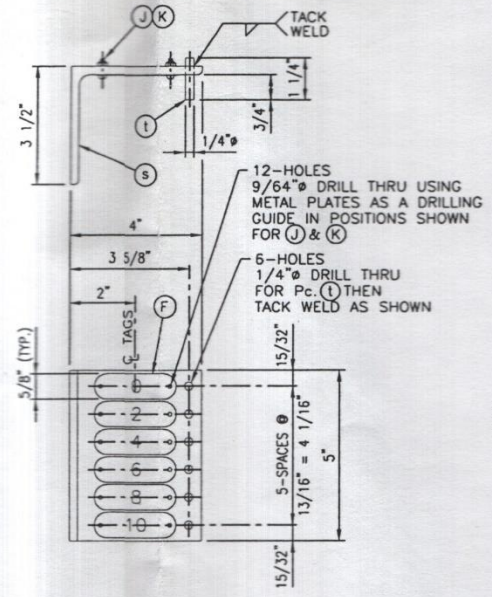
SECTION A-A
LEVER
SCALE: 1 1/2"=1'-0"



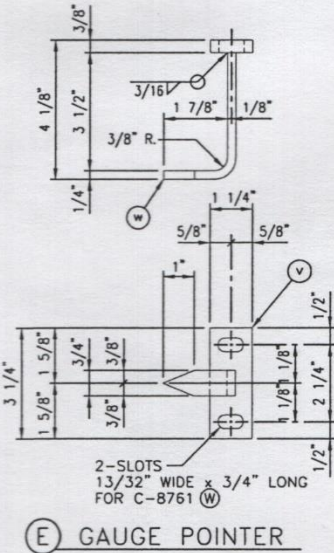
SECTION B-B
LINK
SCALE: 3"=1'-0"



LINK
SCALE: 3"=1'-0"



POSITIONING GAUGE (AS SHOWN)
POSITIONING GAUGE (OPP. HAND)
SCALE: 3/8"=1"



GAUGE POINTER
SCALE: 3/8"=1"

BILL OF MATERIAL				WEIGHTS AND REMARKS
MARK	QTY	DESCRIPTION	MAT'L	
A	2	LEVER		
EACH TO CONSIST OF:				
a	2	PL 1" x 3 1/4" x 4'-0" LG.	A36 STL	BURN TO SUIT
b	1	PL 1" x 3 1/4" x 2'-0" LG.	A36 STL	BURN TO SUIT
c	2	PL 1" x 3 1/4" x 1'-6 5/8" LG.	A36 STL	BURN TO SUIT
d	1	PL 1" x 2 3/4" x 0'-3 1/4" LG.	A36 STL	BURN TO SUIT
e	2	PL 1" x 4" x 0'-4" LG.	A36 STL	BURN TO SUIT
f	2	PL 1" x 2 1/2" x 0'-2 1/2" LG.	A36 STL	BURN TO SUIT
g	2	PL 7/8" x 1 3/4" x 0'-1 3/4" LG.	A36 STL	BURN TO SUIT
h	1	PL 2" x 3 1/4" x 2'-2 3/4" LG.	A36 STL	BURN TO SUIT
B	4	LINK		
EACH TO CONSIST OF:				
j	2	PL 1 1/4" x 3 1/4" x 0'-6" LG.	A36 STL	BURN TO SUIT
k	1	PL 1 1/8" x 3 1/4" x 0'-7" LG.	A36 STL	BURN TO SUIT
C	2	LINK		
EACH TO CONSIST OF:				
m	2	PL 1 1/4" x 3 1/2" x 0'-6 1/2" LG.	A36 STL	BURN TO SUIT
n	1	PL 1 3/8" x 3 1/2" x 1'-8 1/2" LG.	A36 STL	BURN TO SUIT
D	2	POSITIONING GAUGE		
TO CONSIST OF:				
s	1	L 4" x 3 1/2" x 1/4" x 0'-5" LG.	A36 STL	
t	6	BAR 1/4" x 0'-1 1/4" LG.	A36 STL	
E	3	GAUGE POINTER		
TO CONSIST OF:				
v	1	BAR 3/8" x 1 1/4" x 0'-3 1/4" LG.	A36 STL	
w	1	BAR 1/4" x 3/4" x 0'-5 3/8" LG.	A36 STL	BURN TO SUIT
F	18	METAL PLATE	304 S.S.	
5/8" x 2 13/16", STYLE A WITH THE NUMBERS: 0, 2, 4, 6, 8, & 10 STAMPED ON THEM. (3-SETS OF EACH NUMBER)				
McMASTER CARR No. 1632116 OR EQUAL				
G	4	'BUNTING' CAST BRONZE SLEEVE BRG. W/ GRAPHITE FILLED GROOVING STYLE 10 -	C93200 CAST BRZ	
1.260"±.0008" I.D. x 1.500"±.001" O.D. x 1" LG.				
H	4	'BUNTING' CAST BRONZE SLEEVE BRG. W/ GRAPHITE FILLED GROOVING STYLE 10 -	C93200 CAST BRZ	
1.260"±.0008" I.D. x 1.500"±.001" O.D. x 1 1/8" LG.				
J	36	No. 4-40 x 5/8" LG. ROUND HEAD SLOTTED MACHINE SCREW - 18-8 STAINLESS STEEL	18-8 S.S.	
McMASTER CARR No. 91810A112 OR EQUAL				
K	36	No. 4-40 STANDARD HEIGHT LIGHTWEIGHT ELASTIC LOCKNUT - 18-8 STAINLESS STEEL	18-8 S.S.	
McMASTER CARR No. 91831A005 OR EQUAL				
M	1	POSITIONING GAUGE		
TO CONSIST OF:				
s	1	L 4" x 3 1/2" x 1/4" x 0'-5" LG.	A36 STL	
t	6	BAR 1/4" x 0'-1 1/4" LG.	A36 STL	

NOTE: QUANTITIES LISTED ABOVE ARE FOR ONE (1) LARRY CAR ONLY.

SHOP NOTES:

- 1) ALL WORKMANSHIP TO CONFORM TO THE LATEST A.I.S.C. & ACME'S SPECIFICATIONS.
- 2) ALL WELDING TO BE DONE IN ACCORDANCE WITH THE LATEST A.W.S. CODE SPECIFICATIONS USING E70XX ELECTRODES.
- 3) REMOVE ALL SHARP EDGES & BURRS, PRIOR TO PAINTING.
- 4) PAINT PER ACME'S LATEST PAINT SPECIFICATIONS.

C-8758 C.S. HOPPER - VOLUME CONTROL - G.A.
C-8759 CENTER & P.S. HOPPERS - VOL. CONTROL - G.A.
REFERENCE DRAWINGS LISTED ABOVE
ACME STEEL COMPANY

CHICAGO COKE PLANT
COKE OVENS
NORTH & SOUTH LARRY CARS
VOLUME CONTROL - DETAILS

RP PATTERSON COMPANY, INC.
CONSTRUCTION
3/2/01

DRAWN BY:	D. HAYES	01/23/01	JOB No. AA-7032	PLOTTED: 03/02/01
DESIGNED BY:	D. HAYES	01/23/01	FILE SPEC: C-8763.DWG	
CHECKED BY:	J. SCHEVE	02/23/01	ENGINEERED BY	
APPROVED BY:			R.T. PATTERSON CO., INC.	
APPROVED BY:			ENGINEERS & CONSULTANTS	
APPROVED BY:			PITTSBURGH PA. ★ HIGHLAND IN. ★	
APPROVED BY:			EVANSVILLE IN. ★ CLEVELAND OH. ★	

REVISIONS
ISSUED "FOR CONSTRUCTION" RTP 3/2/01

NOTE: This drawing is the property of the Acme Steel Company, U.S.A. and shall not be traced, or reproduced in any manner, nor used for any purpose whatsoever except by written permission of Acme Steel Company.

DO NOT SCALE WORK TO DIMENSIONS

DR.	RTP	CH.	RTP	REV.	0
SCALE	1"=1'-0"	APP.			

C-8763 0