

Acme Coke
11236 S. Torrence Ave.
Chicago IL 60617



acmecoke.com

Document archive

Larry Car Volumetric Control
Dated: 2001

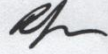
Recovered from site on Feb 27 2021

INTEROFFICE
CORRESPONDENCE

March 29, 2001

Copies to:

To: J Garzella
R O'Hearn ✓
D Podgorny (2)
P Bridgemen (2)

From: R Martello 

Subject: Larry Car Volumetric Control

Reference:

The enclosed drawings show the completed design for the above subject. This design covers the following project objectives:

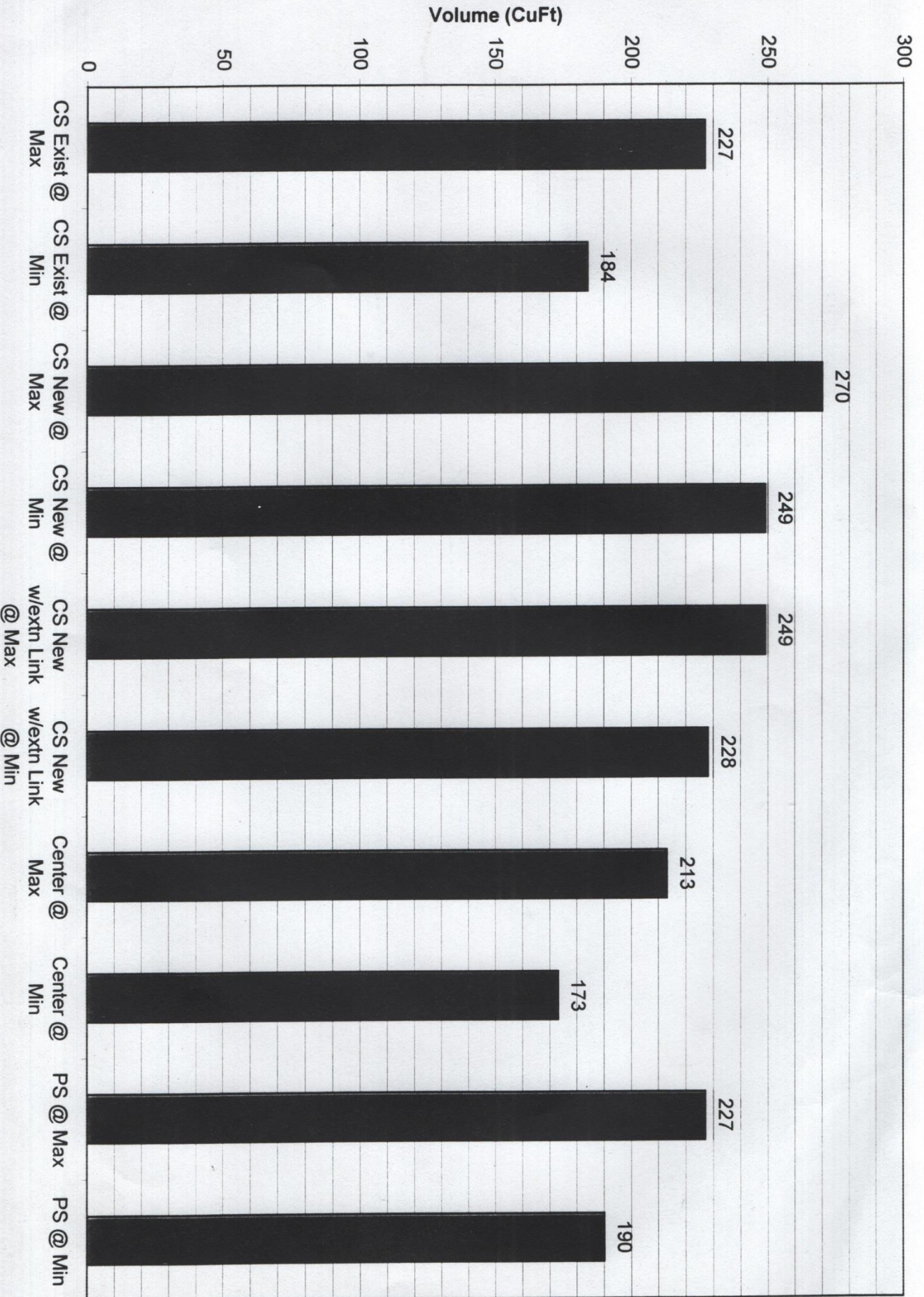
1. Increase the controlled volume range of the CS hopper from the present 227 cuft maximum to 270 cuft maximum and 249 cuft minimum by larger diameter upper and lower sleeves.
2. Provide a method to reduce the volume control range of the new design CS volumetric so that the minimum volume of the new (228 cuft) is near the maximum volume of the present (227 cuft) by interchangeable hanger links.
3. Eliminate measuring sleeve actuator difficulties for all hoppers by a screw jack actuator with a high temperature screw protection boot.
4. Eliminate measuring sleeve operating mechanism seizing for all hoppers by self-lubricated bearings and SS pins.
5. Provide a lower measuring sleeve position indicator for all hoppers.

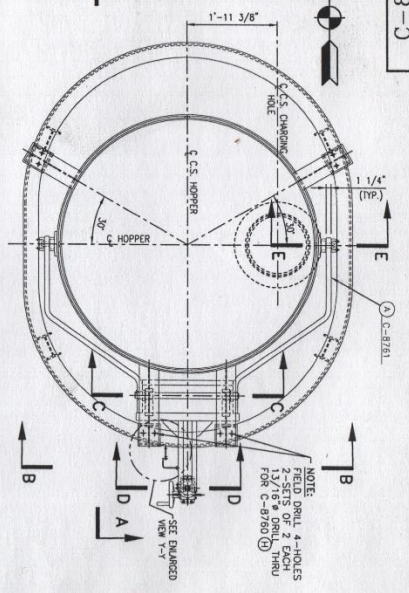
The following drawings are enclosed:

C-8758 CS Hopper Volume Control GA
C-8759 Center and PS Hoppers Volume Control GA
C-8760 Details
C-8761 Details
C-8762 Details
C-8763 Details

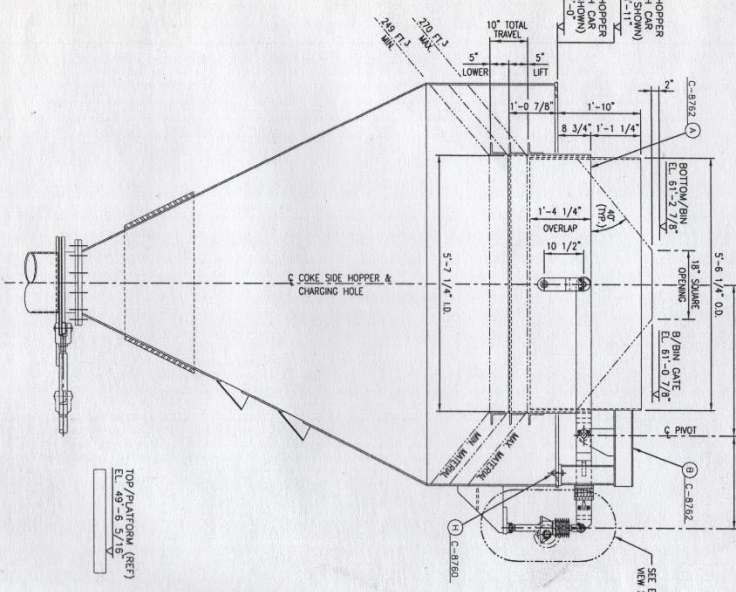
In addition, a chart showing the present and new hopper volume control ranges is attached. Note: the Center and PS hopper control ranges remain unchanged.

Larry Car Volume



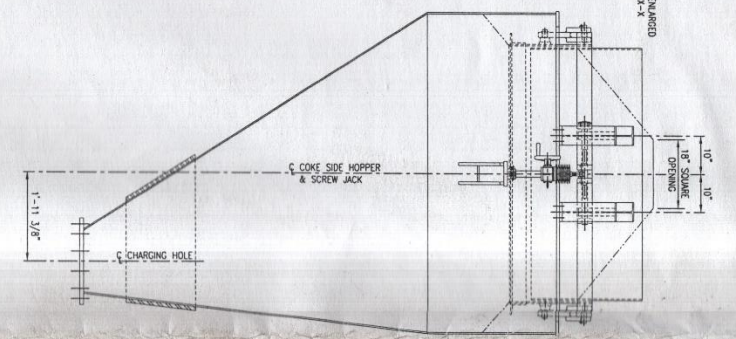


PLAN - COKE SIDE HOPPER



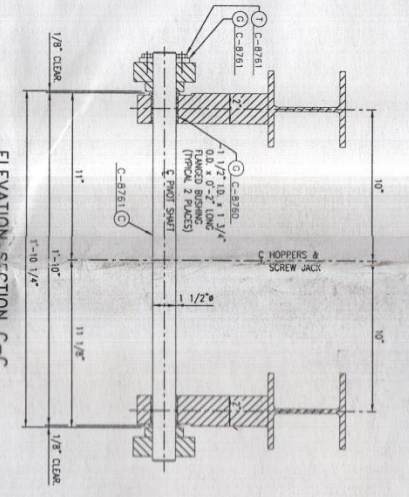
ELEVATION VIEW A-A

TOP/PAVTRON (REF)
EL. 49'-5 5/16\"/>

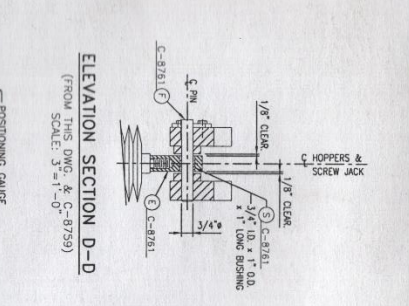


ELEVATION VIEW B-B

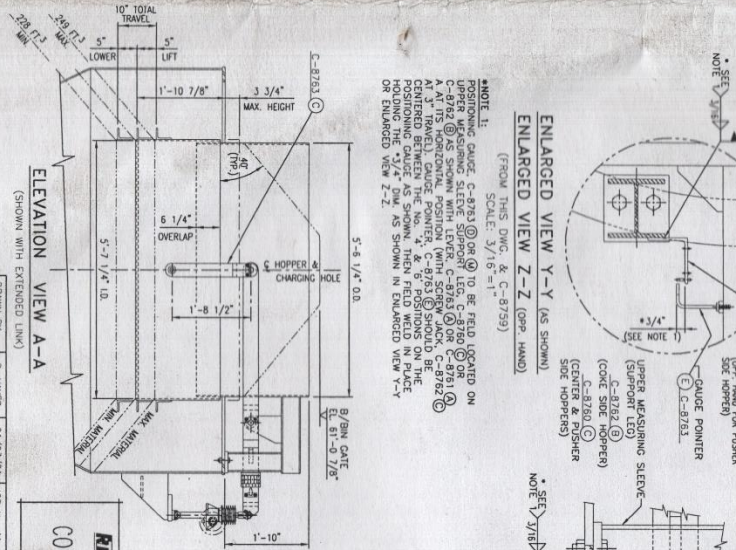
TOP/PAVTRON (REF)
EL. 49'-5 5/16\"/>



ELEVATION SECTION C-C
(FROM THIS DWG. & C-8739)
SCALE: 3/4\"/>

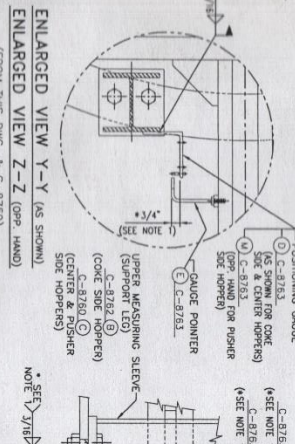


ELEVATION SECTION D-D
(FROM THIS DWG. & C-8739)
SCALE: 3/4\"/>

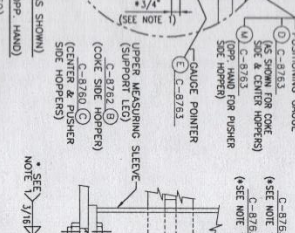


ELEVATION VIEW A-A
(SHOWN WITH EXTENDED LINK)

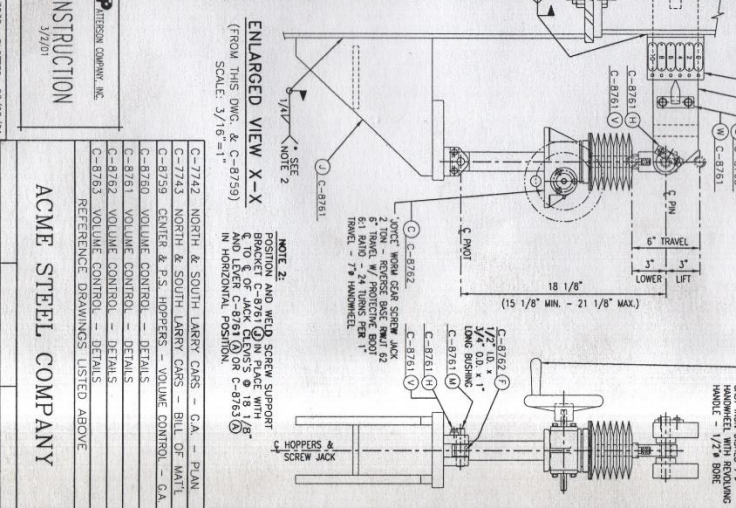
TOP/PAVTRON (REF)
EL. 49'-5 5/16\"/>



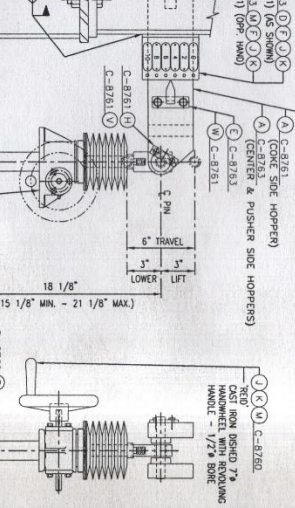
ENLARGED VIEW Y-Y (AS SHOWN)
SCALE: 3/16\"/>



ENLARGED VIEW Z-Z (GPP HAND)
SCALE: 3/16\"/>



ELEVATION VIEW X-X
(FROM THIS DWG. & C-8739)
SCALE: 3/16\"/>



ELEVATION SECTION E-E
SCALE: 3/4\"/>

NOTE 1:
POSITIONING GAUGE, C-8783, TO BE FIELD LOCATED ON UPPER WELDING SLEEVE SUPPORT LEG, C-8780, OR ON A PIVOT POINT POSITION (WITH SCREW JACK, C-8782) AT A TRAVEL GAUGE POSITION, C-8785, SHOULD BE POSITIONING GAUGE AS SHOWN, THEN FIELD WELD IN PLACE HOLDING THE 1/4\"/>

NOTE 2:
POSITION AND WELD SCREW SUPPORT LEGS TO JACK DOWNS 7/8\"/>

NOTE 3:
FIELD WELD CAR SCREW JACK TO JACK DOWNS 7/8\"/>

NOTE 4:
FIELD WELD CAR SCREW JACK TO JACK DOWNS 7/8\"/>

NOTE 5:
FIELD WELD CAR SCREW JACK TO JACK DOWNS 7/8\"/>

NOTE 6:
FIELD WELD CAR SCREW JACK TO JACK DOWNS 7/8\"/>

NOTE 7:
FIELD WELD CAR SCREW JACK TO JACK DOWNS 7/8\"/>

NOTE 8:
FIELD WELD CAR SCREW JACK TO JACK DOWNS 7/8\"/>

NOTE 9:
FIELD WELD CAR SCREW JACK TO JACK DOWNS 7/8\"/>

NOTE 10:
FIELD WELD CAR SCREW JACK TO JACK DOWNS 7/8\"/>

NOTE 11:
FIELD WELD CAR SCREW JACK TO JACK DOWNS 7/8\"/>

NOTE 12:
FIELD WELD CAR SCREW JACK TO JACK DOWNS 7/8\"/>

NOTE 13:
FIELD WELD CAR SCREW JACK TO JACK DOWNS 7/8\"/>

NOTE 14:
FIELD WELD CAR SCREW JACK TO JACK DOWNS 7/8\"/>

NOTE 15:
FIELD WELD CAR SCREW JACK TO JACK DOWNS 7/8\"/>

NOTE 16:
FIELD WELD CAR SCREW JACK TO JACK DOWNS 7/8\"/>

NOTE 17:
FIELD WELD CAR SCREW JACK TO JACK DOWNS 7/8\"/>

NOTE 18:
FIELD WELD CAR SCREW JACK TO JACK DOWNS 7/8\"/>

NOTE 19:
FIELD WELD CAR SCREW JACK TO JACK DOWNS 7/8\"/>

NOTE 20:
FIELD WELD CAR SCREW JACK TO JACK DOWNS 7/8\"/>

NOTE 21:
FIELD WELD CAR SCREW JACK TO JACK DOWNS 7/8\"/>

NOTE 22:
FIELD WELD CAR SCREW JACK TO JACK DOWNS 7/8\"/>

NOTE 23:
FIELD WELD CAR SCREW JACK TO JACK DOWNS 7/8\"/>

NOTE 24:
FIELD WELD CAR SCREW JACK TO JACK DOWNS 7/8\"/>

NOTE 25:
FIELD WELD CAR SCREW JACK TO JACK DOWNS 7/8\"/>

NOTE 26:
FIELD WELD CAR SCREW JACK TO JACK DOWNS 7/8\"/>

NOTE 27:
FIELD WELD CAR SCREW JACK TO JACK DOWNS 7/8\"/>

NOTE 28:
FIELD WELD CAR SCREW JACK TO JACK DOWNS 7/8\"/>

NOTE 29:
FIELD WELD CAR SCREW JACK TO JACK DOWNS 7/8\"/>

NOTE 30:
FIELD WELD CAR SCREW JACK TO JACK DOWNS 7/8\"/>

NOTE 31:
FIELD WELD CAR SCREW JACK TO JACK DOWNS 7/8\"/>

NOTE 32:
FIELD WELD CAR SCREW JACK TO JACK DOWNS 7/8\"/>

NOTE 33:
FIELD WELD CAR SCREW JACK TO JACK DOWNS 7/8\"/>

NOTE 34:
FIELD WELD CAR SCREW JACK TO JACK DOWNS 7/8\"/>

NOTE 35:
FIELD WELD CAR SCREW JACK TO JACK DOWNS 7/8\"/>

NOTE 36:
FIELD WELD CAR SCREW JACK TO JACK DOWNS 7/8\"/>

NOTE 37:
FIELD WELD CAR SCREW JACK TO JACK DOWNS 7/8\"/>

NOTE 38:
FIELD WELD CAR SCREW JACK TO JACK DOWNS 7/8\"/>

NOTE 39:
FIELD WELD CAR SCREW JACK TO JACK DOWNS 7/8\"/>

NOTE 40:
FIELD WELD CAR SCREW JACK TO JACK DOWNS 7/8\"/>

NOTE 41:
FIELD WELD CAR SCREW JACK TO JACK DOWNS 7/8\"/>

NOTE 42:
FIELD WELD CAR SCREW JACK TO JACK DOWNS 7/8\"/>

NOTE 43:
FIELD WELD CAR SCREW JACK TO JACK DOWNS 7/8\"/>

NOTE 44:
FIELD WELD CAR SCREW JACK TO JACK DOWNS 7/8\"/>

NOTE 45:
FIELD WELD CAR SCREW JACK TO JACK DOWNS 7/8\"/>

NOTE 46:
FIELD WELD CAR SCREW JACK TO JACK DOWNS 7/8\"/>

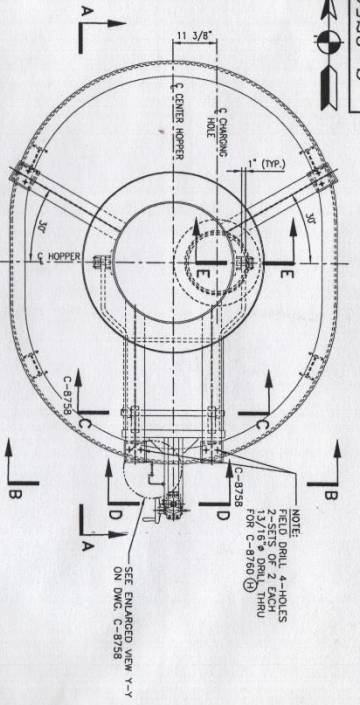
NOTE 47:
FIELD WELD CAR SCREW JACK TO JACK DOWNS 7/8\"/>

NOTE 48:
FIELD WELD CAR SCREW JACK TO JACK DOWNS 7/8\"/>

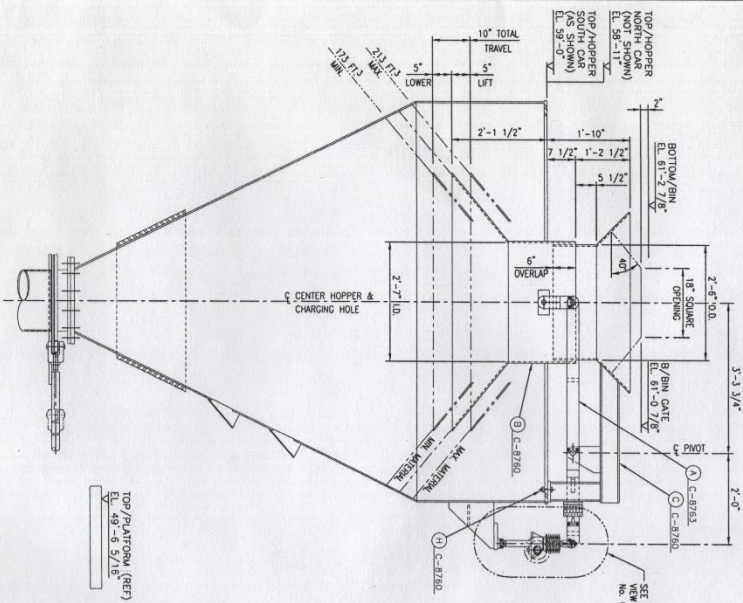
NOTE 49:
FIELD WELD CAR SCREW JACK TO JACK DOWNS 7/8\"/>

NOTE 50:
FIELD WELD CAR SCREW JACK TO JACK DOWNS 7/8\"/>

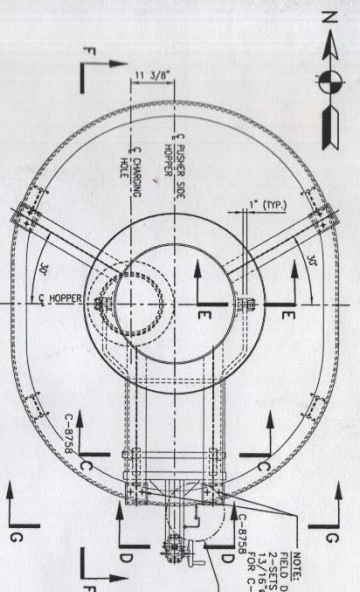
<p>REVISIONS</p> <p>ISSUED FOR CONSTRUCTION RFP 3/2/01</p>			
<p>ELEVATION VIEW A-A</p> <p>TOP/PAVTRON (REF) EL. 49'-5 5/16\"/></p>			
<p>ELEVATION VIEW B-B</p> <p>TOP/PAVTRON (REF) EL. 49'-5 5/16\"/></p>			
<p>ELEVATION VIEW A-A (ENLARGED)</p> <p>(SHOWN WITH EXTENDED LINK)</p> <p>TOP/PAVTRON (REF) EL. 49'-5 5/16\"/></p>			
<p>ELEVATION VIEW X-X</p> <p>(FROM THIS DWG. & C-8739) SCALE: 3/16\"/></p>			
<p>ELEVATION SECTION E-E</p> <p>SCALE: 3/4\"/></p>			
<p>CONSTRUCTION</p> <p>R.P. PATTERSON COMPANY, INC. 3/2/01</p>			
<p>ACME STEEL COMPANY</p>			
<p>CHICAGO COKE PLANT</p> <p>COKE OVENS</p> <p>NORTH & SOUTH LARRY CARS - C.A. - PLAN</p> <p>C-8743 NORTH & SOUTH LARRY CARS - BILL OF WHITE</p> <p>C-8749 CENTER & E.S. HOPPERS - VOLUME CONTROL - O.A.</p> <p>C-8760 VOLUME CONTROL - DETAILS</p> <p>C-8761 VOLUME CONTROL - DETAILS</p> <p>C-8762 VOLUME CONTROL - DETAILS</p> <p>C-8763 VOLUME CONTROL - DETAILS</p> <p>REFERENCE DRAWINGS LISTED ABOVE</p>			
<p>REVISIONS</p> <p>ISSUED FOR CONSTRUCTION RFP 3/2/01</p>			
<p>SCALE: 3/4\"/></p>			
<p>NO. 0</p>			



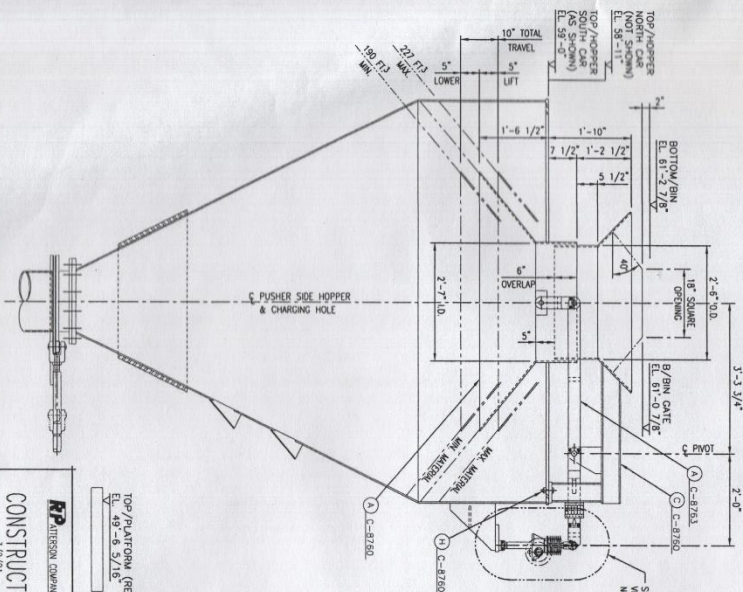
PLAN - CENTER HOPPER



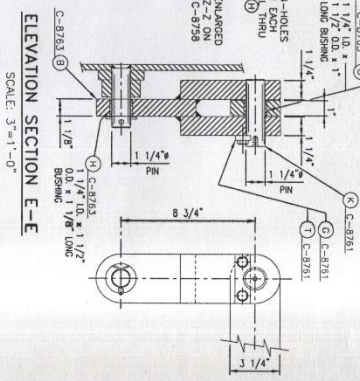
ELEVATION VIEW A-A



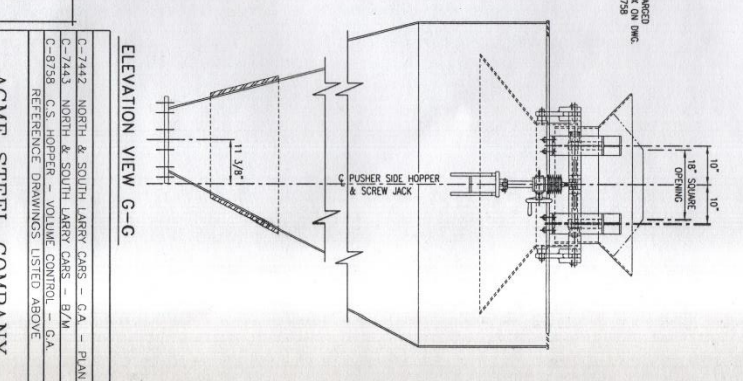
PLAN - PUSHER SIDE HOPPER



ELEVATION VIEW F-F



ELEVATION SECTION E-E



ELEVATION VIEW G-G

REVISIONS

NO.	DATE	BY	DESCRIPTION
1	07/19/01	D. HAYES	ISSUED FOR CONSTRUCTION

DESIGNED BY: D. HAYES
 CHECKED BY: J. SPENCE
 APPROVED BY: R.T. PATTERSON CO., INC.
 DATE: 02/23/01

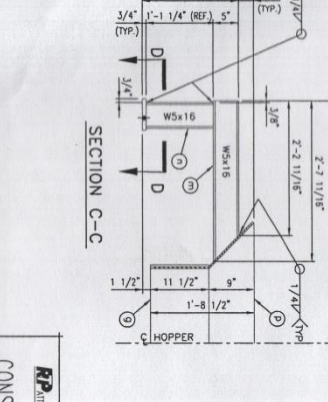
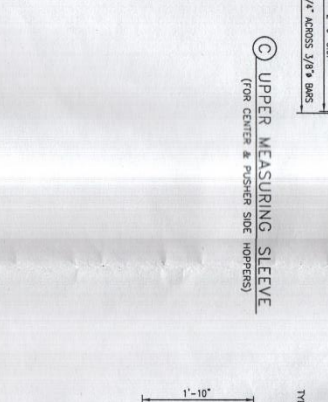
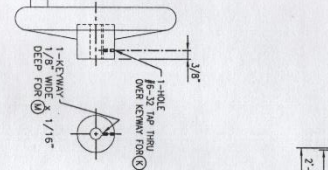
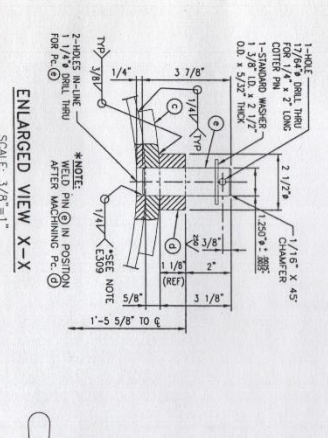
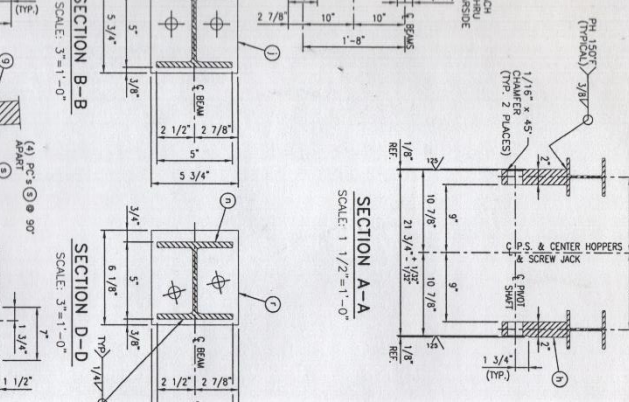
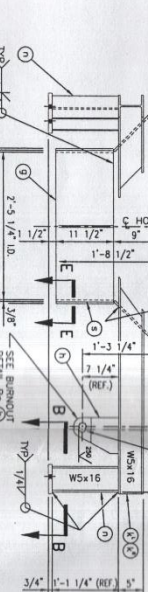
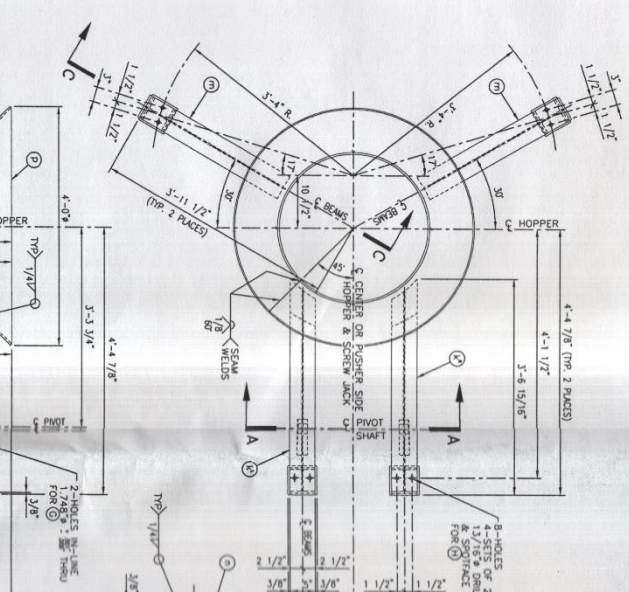
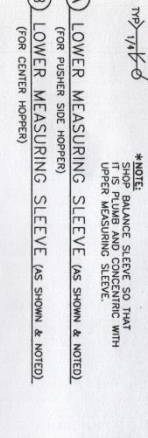
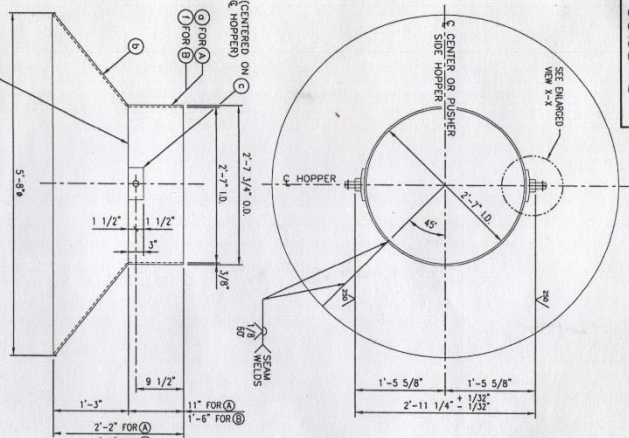
CHICAGO COKE PLANT
 COKE OVENS
 N. & S. LARRY CARS - CTR & P.S. HOPPERS
 VOLUME CONTROL - GENERAL ARRANGEMENT

ACME STEEL COMPANY

C-7442 NORTH & SOUTH LARRY CARS - C.A. - PLAN
 C-7443 NORTH & SOUTH LARRY CARS - B/M
 C-8758 C.S. HOPPER - VOLUME CONTROL - C.A.
 REFERENCE DRAWINGS LISTED ABOVE

ISSUED FOR CONSTRUCTION
 3/1/01

SCALE: 3/4"=1'-0"
 C-8759



MARK	QTY	DESCRIPTION	MATL	WEIGHTS AND REMARKS
A	1	LOWER MEASURING SLEEVE (C.S. HOPPER)	A36 STL	
B	1	UPPER MEASURING SLEEVE (P.S. & CENTER HOPPERS)	A36 STL	
C	2	LOWER MEASURING SLEEVE (P.S. & CENTER HOPPERS)	A36 STL	
D	2	UPPER MEASURING SLEEVE (P.S. & CENTER HOPPERS)	A36 STL	
E	1	LOWER MEASURING SLEEVE (P.S. & CENTER HOPPERS)	A36 STL	
F	1	UPPER MEASURING SLEEVE (P.S. & CENTER HOPPERS)	A36 STL	
G	1	LOWER MEASURING SLEEVE (P.S. & CENTER HOPPERS)	A36 STL	
H	1	UPPER MEASURING SLEEVE (P.S. & CENTER HOPPERS)	A36 STL	
I	1	LOWER MEASURING SLEEVE (P.S. & CENTER HOPPERS)	A36 STL	
J	1	UPPER MEASURING SLEEVE (P.S. & CENTER HOPPERS)	A36 STL	
K	3	#6-32 x 1/2\"/>		
L	3	#8-32 SETSCREW HOLE OVER KEYS		
M	3	KEY - 1/8\"/>		
N	3	ROUND ONE END	1045 STL	

ACME STEEL COMPANY
CONSTRUCTION
1/2/61

SHOP NOTES:

- ALL WORKMANSHIP TO CONFORM TO THE LATEST AISC & AIA SPECIFICATIONS.
- WELDING SHALL BE DONE IN ACCORDANCE WITH THE LATEST AIA'S CODE SPECIFICATIONS USING E70XX ELECTRODES.
- REMOVE ALL SHARP EDGES & BURRS, PRIOR TO PAINTING.
- PAINT PER ACME'S LATEST PAINT SPECIFICATIONS.
- KEYS AND KEYSMANS ARE TO BE MADE WITH SHARPENED TOLERANCES FOR FIT AND FINISH.

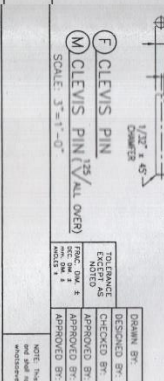
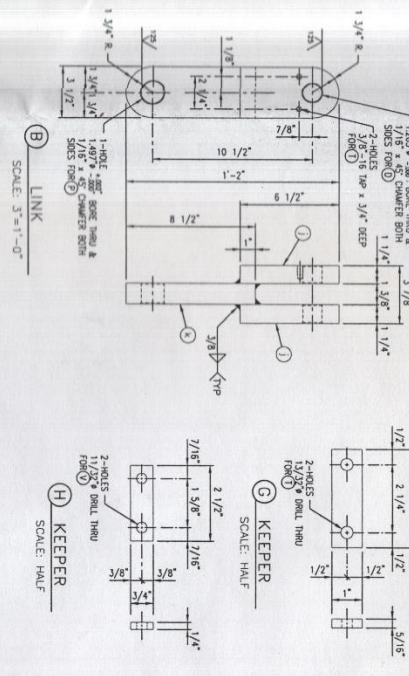
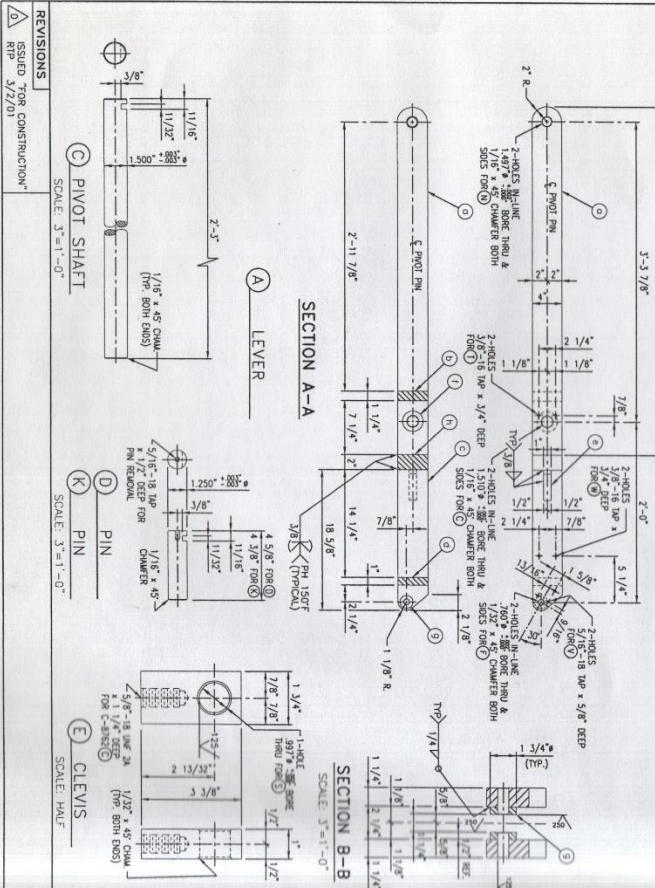
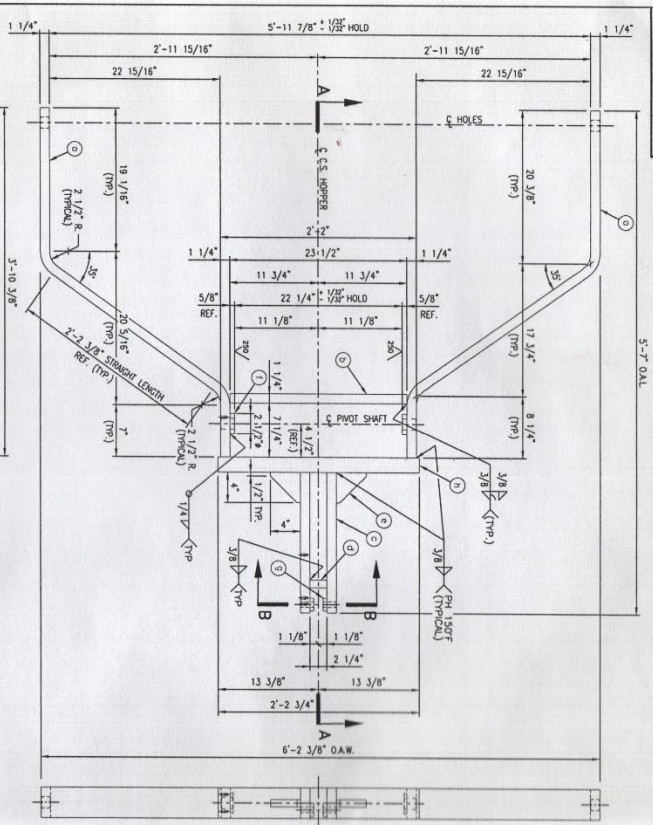
REVISIONS	DATE	BY	DESCRIPTION
1	1/2/61	ASD	ISSUED FOR CONSTRUCTION

DATE	BY	DESCRIPTION
01/23/01	D. WATTS	DESIGNED
01/23/01	J. SCHNEF	APPROVED
02/23/01	J. SCHNEF	APPROVED
02/23/01	J. SCHNEF	APPROVED

NO.	DATE	BY	DESCRIPTION
1	01/23/01	D. WATTS	DESIGNED
2	01/23/01	J. SCHNEF	APPROVED
3	02/23/01	J. SCHNEF	APPROVED
4	02/23/01	J. SCHNEF	APPROVED

NO.	DATE	BY	DESCRIPTION
1	01/23/01	D. WATTS	DESIGNED
2	01/23/01	J. SCHNEF	APPROVED
3	02/23/01	J. SCHNEF	APPROVED
4	02/23/01	J. SCHNEF	APPROVED

CHICAGO COKE PLANT
COKE OVENS
NORTH & SOUTH LARRY CARRS
VOLUME CONTROL - DETAILS
C-8760
0



REVISIONS

NO.	DATE	BY	DESCRIPTION
1	3/2/01	RP	ISSUED FOR CONSTRUCTION

SCALE: 3"=1'-0"

SHOP NOTES:

- 1) ALL WORKMANSHIP TO CONFORM TO THE LATEST A.I.S.C. & A.C.I.'S SPECIFICATIONS.
- 2) ALL WELDING TO BE DONE IN ACCORDANCE WITH THE LATEST A.I.S.C. CODE SPECIFICATIONS.
- 3) BRUSH OFF ALL STEEL SURFACES FROM EXCESS RUST.
- 4) PAINT PER A.C.I.'S LATEST PAINT SPECIFICATIONS.

RP CONSTRUCTION

DESIGNED BY: D. HAVES 01/15/01 PLOTTED: 02/02/01

CHECKED BY: J. SCHEWE 02/23/01

APPROVED BY: R.T. PATTERSON CO., INC. 02/23/01

PROJECT: CHICAGO COKE PLANT

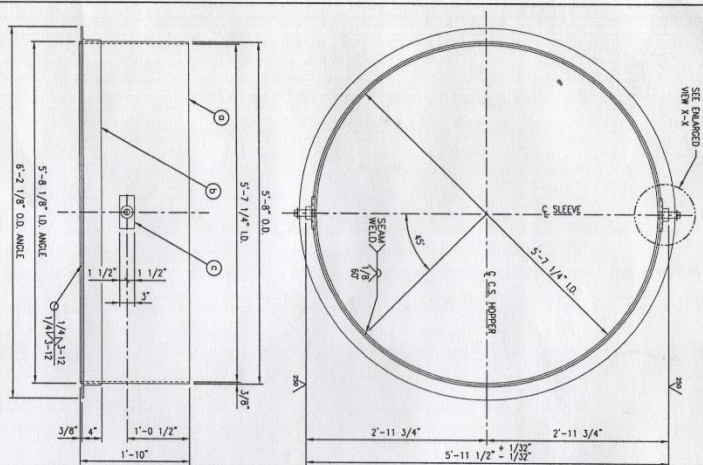
DESCRIPTION: C-8758 C.S. HOPPER - VOLUME CONTROL - G.A.

REFERENCE: CHICAGO COKE PLANT - VOL. CONTROL - G.A. NORTH & SOUTH LARRY CARS

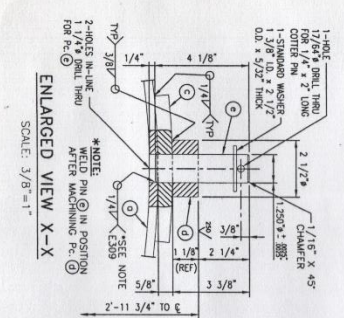
SCALE: 3"=1'-0"

NOTE: QUANTITIES LISTED ABOVE ARE FOR ONE (1) LARRY CAR ONLY.

MARK	QTY	DESCRIPTION	MAT'L	WEIGHTS AND REMARKS
A	1	LEVER	A36 STL	20.1 LB
B	2	LINK	A36 STL	10.1 LB
C	3	PIVOT SHAFT	A36 STL	10.1 LB
D	2	PIN	A36 STL	10.1 LB
E	3	CLEVIS	A36 STL	10.1 LB
F	3	CLEVIS PIN	A36 STL	10.1 LB
G	3	KEEPER	A36 STL	10.1 LB
H	6	KEEPER	A36 STL	10.1 LB
I	6	SCREW SUPPORT BRACKET	A36 STL	10.1 LB
J	3	SCREW SUPPORT BRACKET	A36 STL	10.1 LB
K	4	PIN	A36 STL	10.1 LB
L	4	BRONZE SLEEVE BRG.	BRONZE	10.1 LB
M	3	BRONZE SLEEVE BRG.	BRONZE	10.1 LB
N	2	BRONZE SLEEVE BRG.	BRONZE	10.1 LB
O	2	BRONZE SLEEVE BRG.	BRONZE	10.1 LB
P	4	BRONZE SLEEVE BRG.	BRONZE	10.1 LB
Q	3	BRONZE SLEEVE BRG.	BRONZE	10.1 LB
R	3	BRONZE SLEEVE BRG.	BRONZE	10.1 LB
S	3	BRONZE SLEEVE BRG.	BRONZE	10.1 LB
T	18	HEX HEAD CAPSCREW	A36 STL	10.1 LB
U	12	HEX HEAD CAPSCREW	A36 STL	10.1 LB
V	12	HEX HEAD CAPSCREW	A36 STL	10.1 LB
W	6	HEX HEAD CAPSCREW	A36 STL	10.1 LB

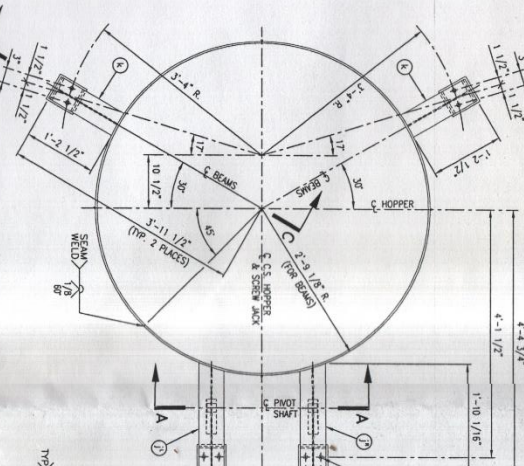


A LOWER MEASURING SLEEVE

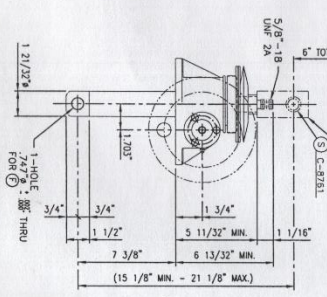


ENLARGED VIEW X-X

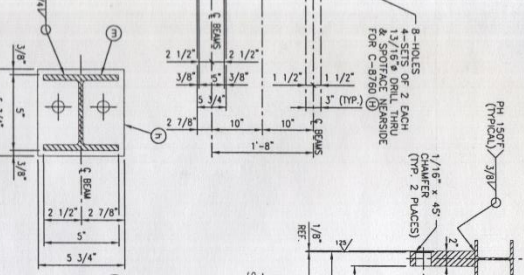
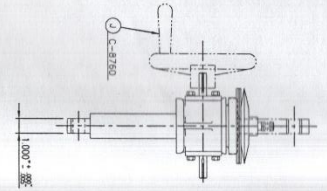
REVISIONS
ISSUED FOR CONSTRUCTION
RFP 3/2/01



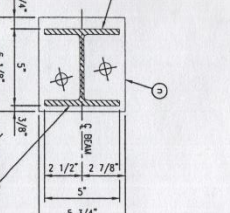
B UPPER MEASURING SLEEVE



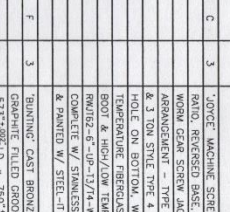
C MACHINE SCREW JACK



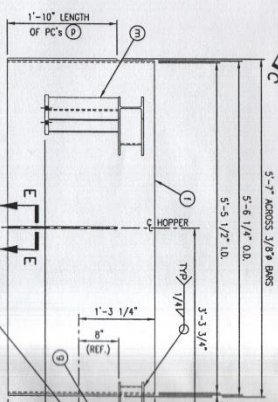
SECTION A-A



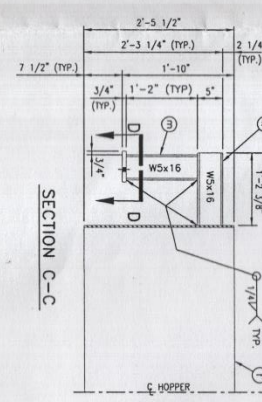
SECTION B-B



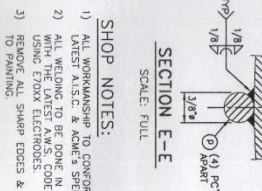
SECTION D-D



BURNOUT DETAIL P-C



SECTION C-C



SECTION E-E

SHOP NOTES:

- 1) ALL WORKMANSHIP TO CONFORM TO THE LATEST A.S.S. & B.S.S. SPECIFICATIONS WITH THE LATEST A.S.S. CODE SPECIFICATIONS USING FLOXX ELECTRODES.
- 2) REMOVE ALL SHARP EDGES & BURNS, PRIOR TO PAINTING.
- 3) PAINT PER A.C.M.E.'S LATEST PAINT SPECIFICATIONS.

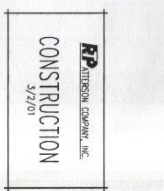
DESIGNED BY:	D. HAYES	01/15/01	JOB NO. AM-7032	PLOTTED: 03/02/01
CHECKED BY:	D. HAYES	01/15/01	FILE SPEC: C-8759 DWG	
APPROVED BY:	J. SCHEWIE	02/23/01		
DESIGNED BY:	D. HAYES	01/15/01	JOB NO. AM-7032	PLOTTED: 03/02/01
CHECKED BY:	D. HAYES	01/15/01	FILE SPEC: C-8759 DWG	
APPROVED BY:	J. SCHEWIE	02/23/01		

NOTE: This drawing is the property of the Acme Steel Company, U.S.A. and shall not be used for any other project without the written permission of Acme Steel Company.

CHICAGO COKE PLANT
COKE OVENS
NORTH & SOUTH LARRY CARS
VOLUME CONTROL - DETAILS

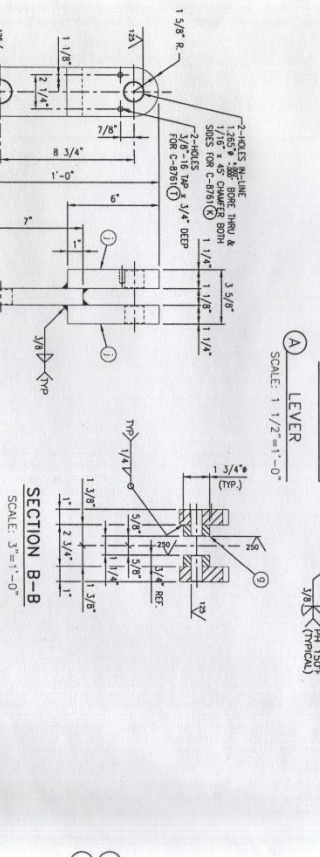
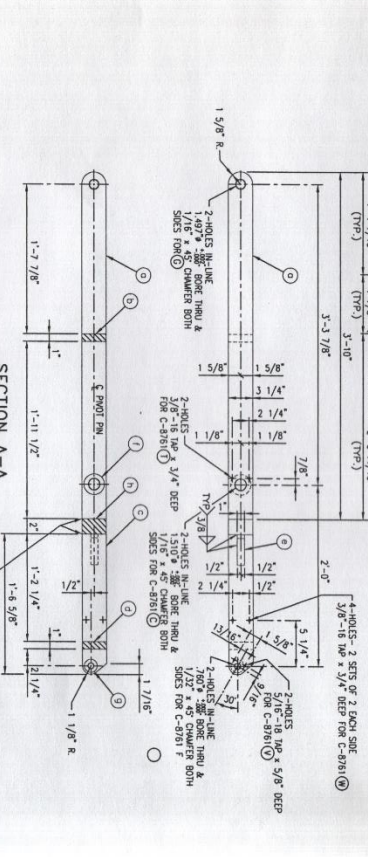
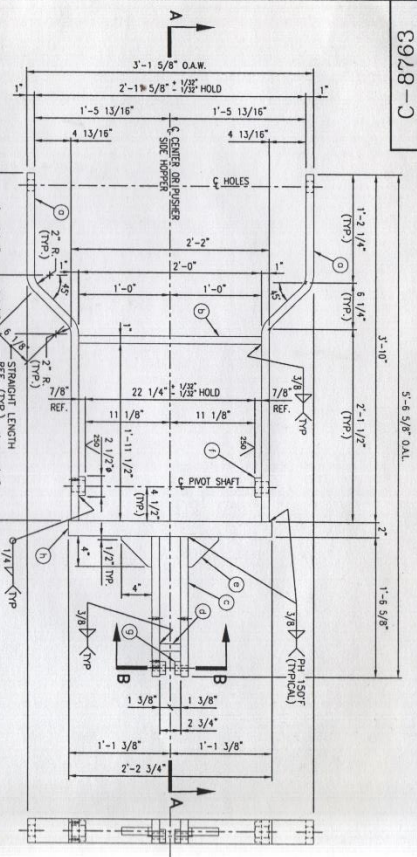
SCALE: 1"=1'-0"

0



MARK	QTY	DESCRIPTION	MAT'L	WEIGHTS
A	1	LOWER MEASURING SLEEVE (C.S. HOPPER)		
TO CONSIST OF:				
a	1	PL. 3/8" x 22" x 17'-8 7/16" LG. A36 STEEL BEND TO SU		
b	1	4.4" x 3/8" x 3/8" x 18'-2 5/8" LG. A36 STEEL BEND TO SU		
c	2	BAR 3/8" x 3/8" x 0'-6 1/2" LG. A36 STEEL BEND TO SU		
d	2	BAR 3/8" x 3/8" x 0'-1 3/8" LG. A36 STEEL FIN. ALLOWE		
e	2	BAR 1 1/4" x 0'-4 1/8" LG. A36 STEEL		
B	1	UPPER MEASURING SLEEVE (C.S. HOPPER)		
TO CONSIST OF:				
1	1	PL. 3/8" x 28 1/2" x 17'-2 15/16" LG. A36 STEEL BEND TO SU		
2	1	PL. 2" x 7" x 0'-9 3/4" LG. A36 STEEL BEND TO SU		
3	1	PL. 3/8" x 5 3/4" x 0'-5 3/4" LG. A36 STEEL		
4	1	PL. 3/8" x 5 3/4" x 0'-5 3/4" LG. A36 STEEL BEND TO SU		
5	1	PL. 3/8" x 11'-10 1/16" LG. A36 STEEL BEND TO SU		
6	2	MS x 18" x 1'-2 1/2" LG. A36 STEEL BEND TO SU		
7	2	PL. 3/4" x 5 3/4" x 0'-6 1/8" LG. A36 STEEL		
8	2	BAR 3/8" x 1'-10" LG. A36 STEEL		
C	3	MACHINE SCREW JACK - 2 TON, 6.1 RATIO, REVERSED BASE, JERHOFF, TRANSLATING WORK GEAR SCREW JACK, W/ DOUBLE CLEVIS ARRANGEMENT - TYPE 3 THREADED ON TOP & 3 TON STYLE TYPE 4 CLEVIS W/ 7477 MARK HOLE ON BOTTOM, W/ 6" RISE W/ HIGH TEMPERATURE FIBERGLASS ALUMINUM PROTECTIVE BOOT & HIGH/LOW TEMP GREASE - MODEL NO RWL23-6-UP-13/14-W/BOT-DBL. CLEVIS-SPCL COMPLETE W/ STAINLESS STEEL SCREW & WORN & PAINTED W/ STEEL-IT STAINLESS STEEL PAINT		
F	3	TRAINING CAST BRONZE SLEEVE BRG. W/ 533382 LEAD IN BRONZE SLEEVE 1 3/8" x 1 3/8" x 1 3/8" LG. 5312-388-10 x 12507-388-10.8 x 1" LG.		

NOTE: QUANTITIES LISTED ABOVE ARE FOR ONE (1) CARRY CAR ONLY.



REVISIONS
 ISSUED FOR CONSTRUCTION
 RPP 3/27/01

SCALE: 3/8"=1"

SCALE: 3/8"=1"

SCALE: 3/8"=1"

SCALE: 3/8"=1"

SCALE: 3/8"=1"

SCALE: 3/8"=1"

SCALE: 3/8"=1"

SCALE: 3/8"=1"

SCALE: 3/8"=1"

CONSTRUCTION
 3/27/01

SHOP NOTES:
 1) ALL WORKMANSHIP TO CONFORM TO THE LATEST A.I.S.C. & A.C.I. SPECIFICATIONS.
 2) ALL WELDING TO BE DONE IN ACCORDANCE WITH THE LATEST A.M.S. CODE SPECIFICATIONS.
 3) REFER TO DRAWING ELECTRICALS FOR WELDING SYMBOLS & BURS, PRIOR TO PAINTING.
 4) PAINT PER A.C.I.'S LATEST PAINT SPECIFICATIONS.

DESIGNED BY	D. HAVES	DATE	01/23/01
CHECKED BY	J. SCHNE	DATE	02/23/01
APPROVED BY			
DESIGNED BY	D. HAVES	DATE	01/23/01
CHECKED BY	J. SCHNE	DATE	02/23/01
APPROVED BY			

CHICAGO COKE PLANT
 COKE OVENS
 NORTH & SOUTH LARRY CARS
 VOLUME CONTROL - DETAILS

ACME STEEL COMPANY

C-8763 0

NOTE: THIS DRAWING IS THE PROPERTY OF THE ACME STEEL COMPANY, U.S.A. AND SHALL NOT BE REPRODUCED OR TRANSMITTED IN ANY FORM OR BY ANY MEANS, ELECTRONIC OR MECHANICAL, INCLUDING PHOTOCOPYING, RECORDING, OR BY ANY INFORMATION STORAGE AND RETRIEVAL SYSTEM, WITHOUT THE WRITTEN PERMISSION OF ACME STEEL COMPANY.

MARK	QTY	DESCRIPTION	MAT'L	WEIGHTS AND REMARKS
A	2	LEVER	A36 S11	
B	4	LINK	A36 S11	
C	2	POSITIONING GAUGE	A36 S11	
D	1	GAUGE POINTER	A36 S11	
E	1	METAL PLATE	A36 S11	
F	18	CAST BRONZE STEEL BRG. W/	A36 S11	
G	4	CAST BRONZE STEEL BRG. W/	A36 S11	
H	4	CAST BRONZE STEEL BRG. W/	A36 S11	
I	4	CAST BRONZE STEEL BRG. W/	A36 S11	
J	36	CAST BRONZE STEEL BRG. W/	A36 S11	
K	36	CAST BRONZE STEEL BRG. W/	A36 S11	
L	36	CAST BRONZE STEEL BRG. W/	A36 S11	
M	1	POSITIONING GAUGE	A36 S11	
N	1	GAUGE POINTER	A36 S11	

NOTE: QUANTITIES LISTED ABOVE ARE FOR ONE (1) LARRY CAR ONLY.

CHICAGO COKE PLANT
 COKE OVENS
 NORTH & SOUTH LARRY CARS
 VOLUME CONTROL - DETAILS

ACME STEEL COMPANY

C-8763 0